

OKLAHOMA STATE UNIVERSITY



SCOUTING HOOPS TEAM E-BOOK

www.scoutinghoops.com

U.P. to L.A. Enterprises, Inc. Online Coaches Store



**Serving
VirtualBasketballCoach.com
and ScoutingHoops.com**



Thank you very much for your order from our online store.

We know you just invested in a Scouting Hoops E-Book. To thank you for that, we would like to offer you a special discount today. Take \$20 off our Scouting Hoops Lifetime Membership (\$87.00 now only \$67.00). Get your investment back and then some! Find the special purchase link below:

[Scouting Hoops Discount Membership Link](#)

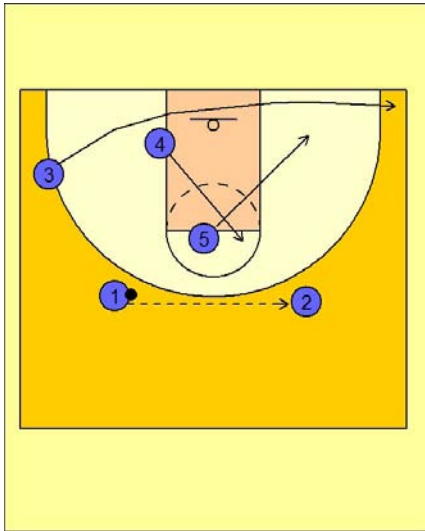
If the above link does not work, you may manually type this website address in your browser:

www.scoutinghoops.com/subscribe_67_sale.php

Please do not share this link information with anyone.

Oklahoma state Zone offense (2)

1



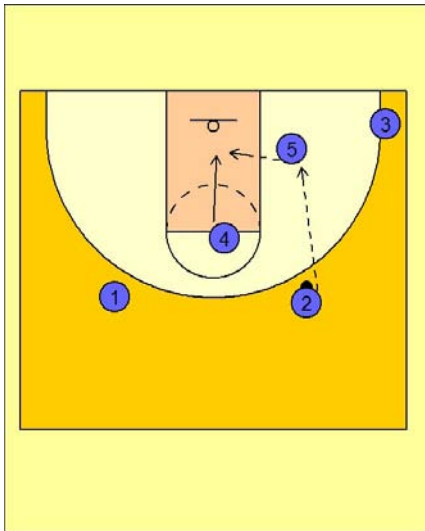
Oklahoma State Zone Offense

Oklahoma State likes to use a simple "X" cutting action in the post with their big men while having them utilize the short corner area of the floor. Perimeter players will pass and cut through from time to time assuming the baseline runner position.

Here we see #1 passing across the top to #2. #5 steps to the ball side short corner area while #4 replaces him on top. #5, by cutting to the short corner area, draws the low defender away from the basket creating a large gap in the middle for the offense to exploit.

#3 becomes the baseline runner and follows the ball to the ball side corner.

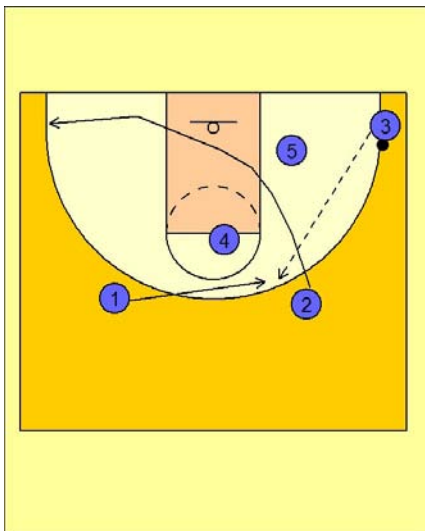
2



Oklahoma State Zone Offense

If #5 should receive the ball in the short corner area, the high post player will always "dive" to the basket into the open area created by #5 stepping to the short corner.

3

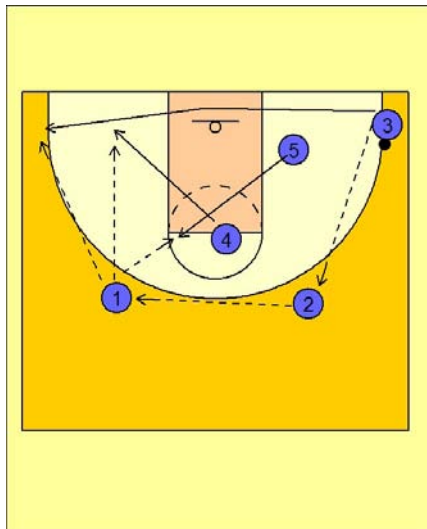


Oklahoma State Zone Offense

If #2 passes to #3 in the right corner he MAY cut through and out to the other side of the floor. #1 would then come over and fill the area created by #2 cutting through.

Oklahoma state Zone offense (2)

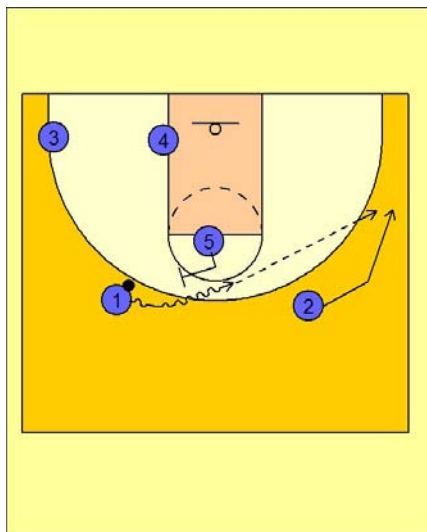
4



Oklahoma State Zone Offense

If #2 stays and does not cut through, #3 will reverse the ball to #2 and #3 will run to the other side of the floor along the baseline. #2 will look to reverse the ball to #1 on the left wing while again, the high post player #4, cuts to the short corner area on the other side of the floor. #5 follows behind by flashing into the high post area.

5

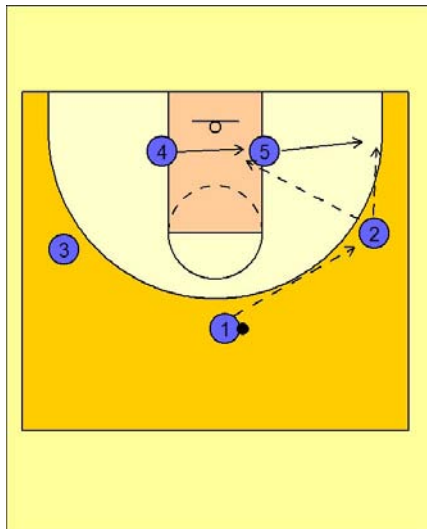


Oklahoma State Zone Offense

At any point, the post players may step out and ball screen for the perimeter. The perimeter players will penetrate the gap off the ball screen looking to score or drive and kick out to a spotting up player.

Oklahoma state Zone offense (1)

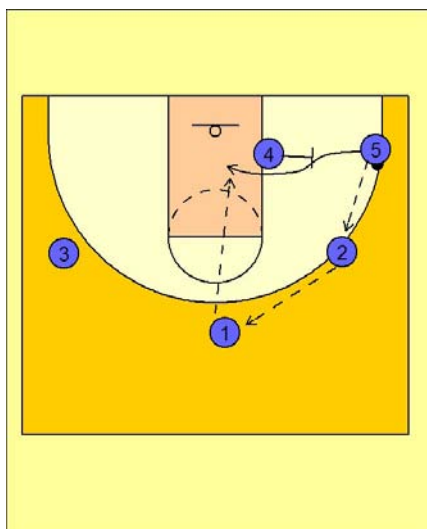
1



Oklahoma State Zone Offense

#1 passes to #2 on the right wing. The post player, #5, steps out to the right corner to receive the next pass from #2 if he is open. #4 slides over to the low post to replace #5.

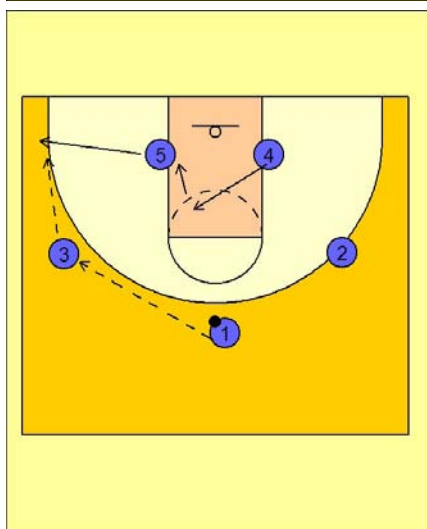
2



Oklahoma State Zone Offense

#5 reversed the ball to #2 who passes to #1 on top. #4 steps out and back screens the defender nearest #5. #5 cuts over the top and into the middle of the lane looking for an open area and a post entry pass from #1.

3

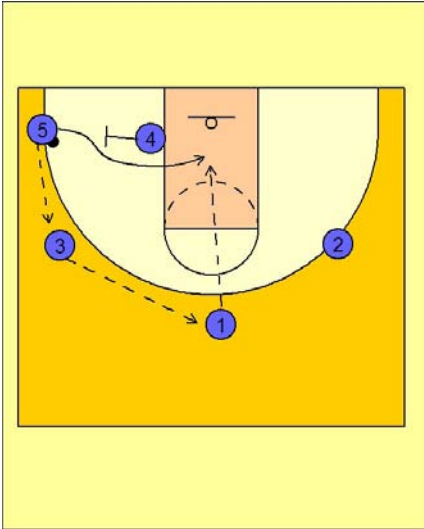


Oklahoma State Zone Offense

The ball is reversed on top to #3 on the left wing while #5 steps out to the left wing. #4 follows the ball across to the low block. He may flash from time to time in the open area in the lane near the high post if it is open to receive the pass. #3 can hit #5 in the corner if he is open.

Oklahoma state Zone offense (1)

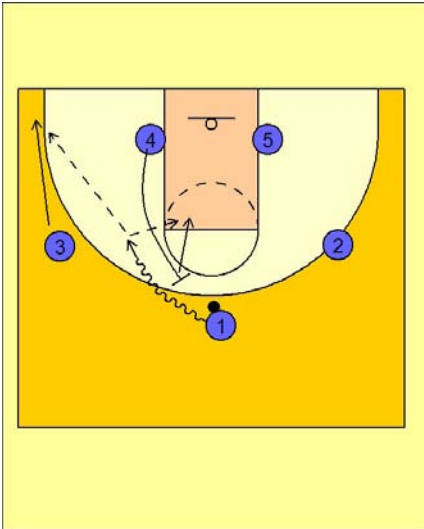
4



Oklahoma State Zone Offense

The ball is passed back to #3 and the screening action from #4 and #5 is repeated. #1 now looks inside to #5.

5

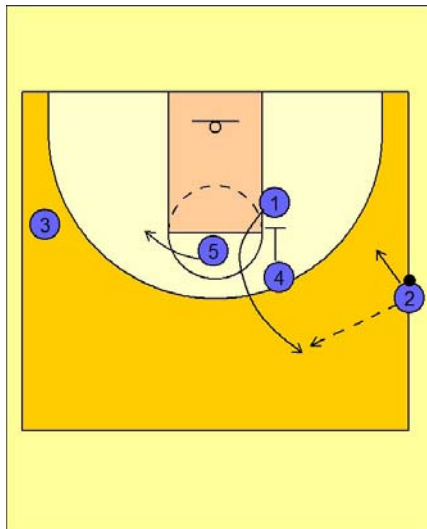


Oklahoma State Zone Offense

After a few swings of the ball, look for the post players to step out and set perimeter screens for the ballhandler.

Oklahoma state Side ob (1)

1

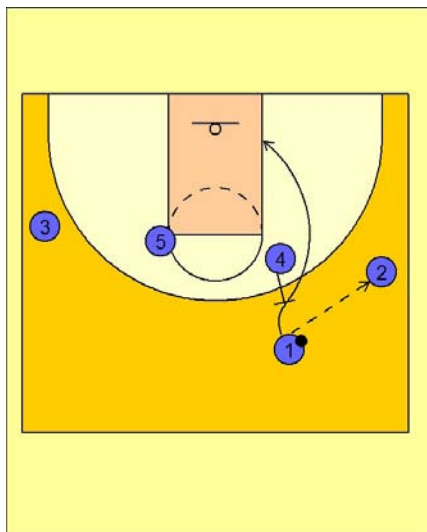


Oklahoma State Side Ob vs. Man Defense

#4 down screens to get #1 open for the entry pass from #2.

After #2 passes to #1, #2 steps inbound. #5 cuts away to the opposite high post elbow area.

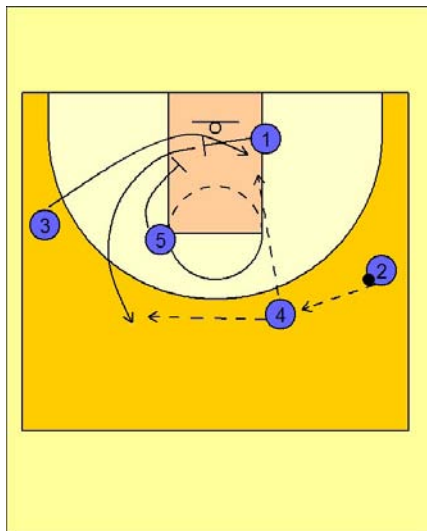
2



Oklahoma State Side Ob vs. Man Defense

#1 passes back to #2. #4 back screens for #1 and #1 cuts down to the low block area.

3

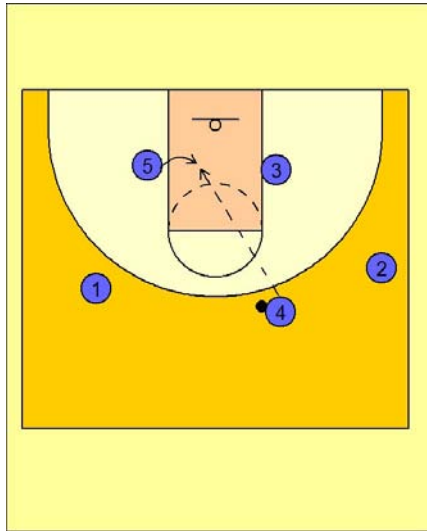


Oklahoma State Side Ob vs. Man Defense

#2 reverses the ball to #4 on top. #1 moves across and sets a screen for #3 who cuts over or under the screen looking for the quick hitting layup and pass from #4. If that is not available, #5 now moves down and "screens the screener", #1, trying to free him on the left side of the floor for an open jumper.

Oklahoma state Side ob (1)

4

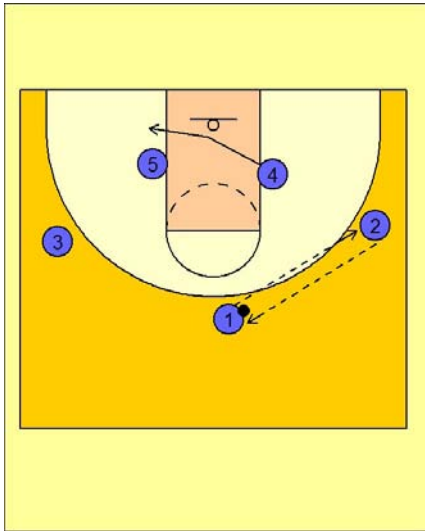


Oklahoma State Side Ob vs. Man Defense

If #1 is not open, #5 ducks in hard after down screening for #1.

Oklahoma state Set play vs. zone (2)

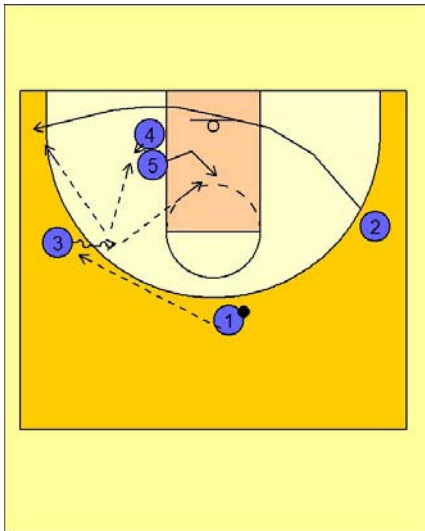
1



Oklahoma State Set Play vs. Zone Defense

#1 passes to #2 on the right wing and receives the pass back from #1. As the ball is passed back to #1 on top, #4 cuts across the lane and stacks up on the left block area with #5.

2

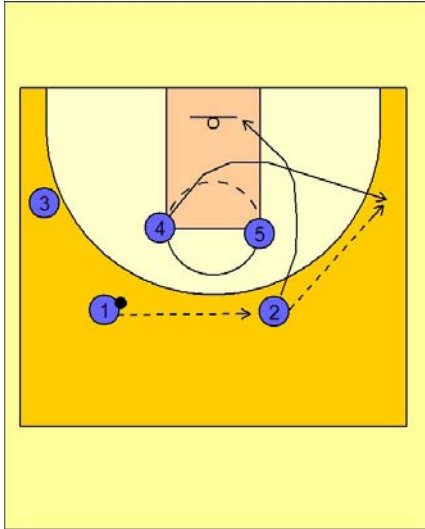


Oklahoma State Set Play vs. Zone Defense

#1 passes to #3 on the left wing while #2 cuts down and out to the ball side corner off the double screen by #4 and #5. As #2 breaks off the screen, #5 steps into the middle while #4 steps in and posts up.

This "quick split" forces the defenders to make decisions on who to guard, usually leaving someone free momentarily.

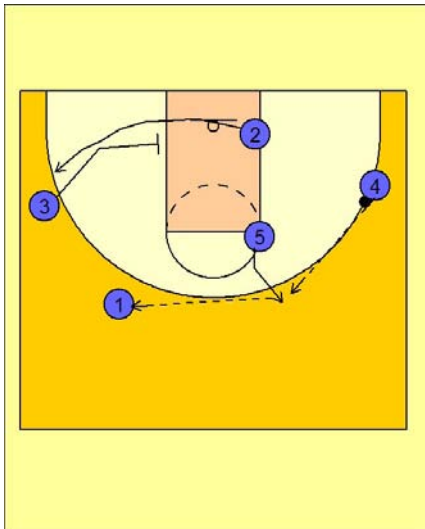
Oklahoma state Set play vs. zone (1)



Oklahoma State Set Play vs. Zone Defense

#1 reverses the ball to #2 on the right high side. #4 steps out to the right wing area to receive the pass from #2. As #2 passes to #4 he cuts through the lane to down underneath the basket.

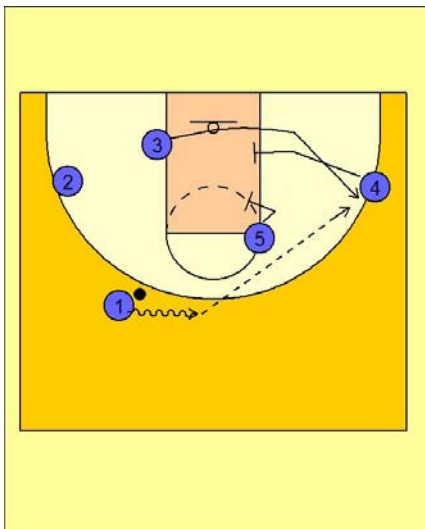
1



Oklahoma State Set Play vs. Zone Defense

#5 now steps out to receive the reversal pass from #4. #5 passes to #1 while #3 screens the back side low defender. #2 comes out to the left side looking for an open jumper. This is primarily a decoy as what they are looking for is the next action.

2



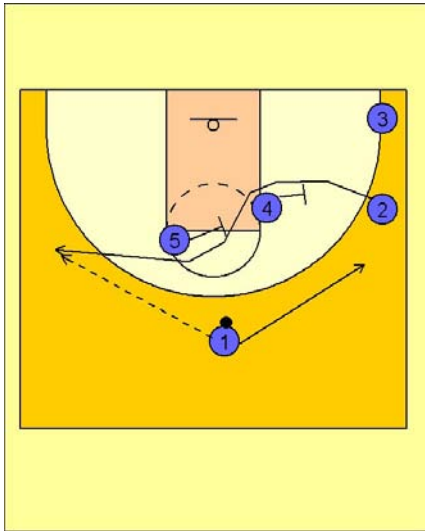
Oklahoma State Set Play vs. Zone Defense

#1 takes the ball over to the right side while #4 and #5 screen the zone defenders trying to free #3 breaking out to the right wing looking for an open jumper. #1 skips the ball over the top if #3 is open.

3

Oklahoma state Set play (11)

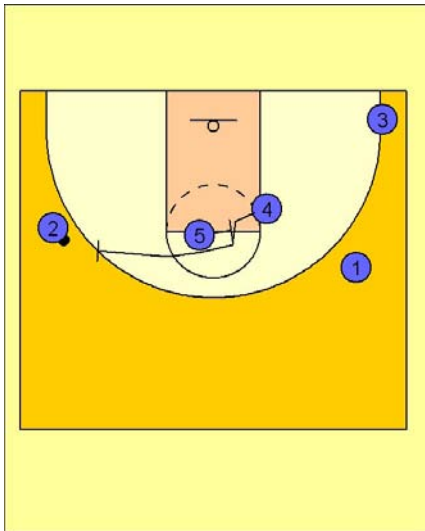
1



Oklahoma State Set Play vs. Man Defense

#5 and #4 start the play by screening for #2 to get open on the left wing area. #1 enters the ball to #2 and cuts away to the opposite wing area.

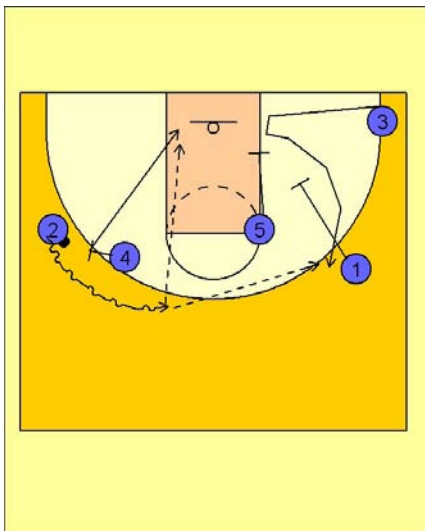
2



Oklahoma State Set Play vs. Man Defense

Once #2 has the ball, #5 continues his movement to the right by screening for #4. #4 breaks over the screen and moves toward #2 on the left wing, ready to execute the pick and roll.

3



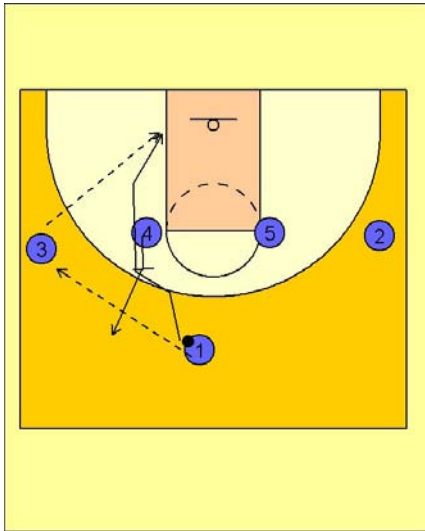
Oklahoma State Set Play vs. Man Defense

As #2 comes off the screen from #4, #5 and #1 are setting a double staggered screen for #3 breaking out to the top looking for the open shot.

#4 rolls to the basket as #2 comes over the top of the ball screen.

Oklahoma state Set play (10)

1



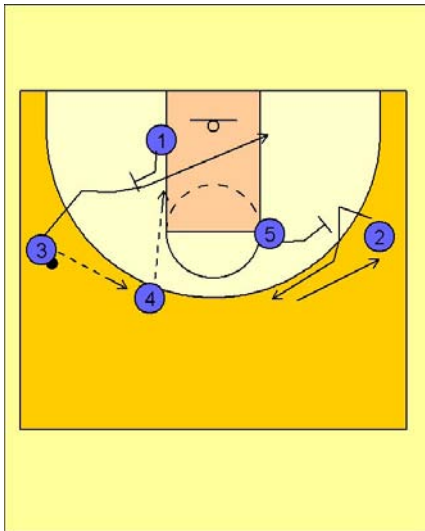
Oklahoma State Set Play vs. Man Defense

1 - 4 high to begin.

#1 enters the ball to the left wing player #3. #1 receives a back screen from #4 and cuts to the left low block. If #1 is open, #3 can make the pass.

#4 steps out after back screening for #1.

2



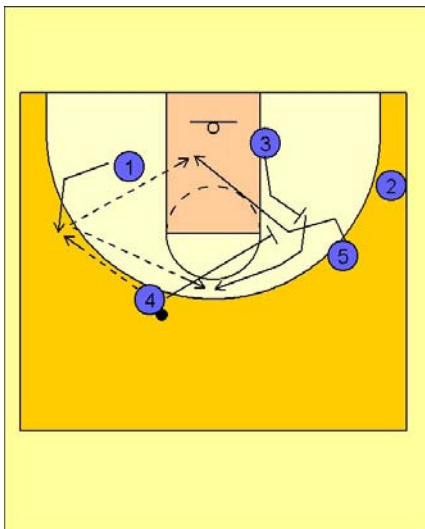
Oklahoma State Set Play vs. Man Defense

#3 passes to #4 and then cuts through the lane off of a back screen from #1.

If #3 is open, #4 will make the pass to the cutting #3.

At the same time this action is going on, #5 and #2 are occupying their defenders by screening for each other.

3



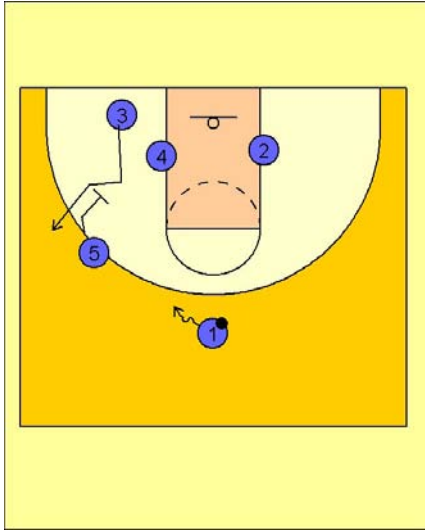
Oklahoma State Set Play vs. Man Defense

If #3 does not receive the pass, #4 passes to #1 breaking out to the left wing after back screening for #3.

On the pass, #3 is stepping out and setting a diagonal back screen for #5 who cuts to the left low block.

#4 then screens the screener, setting a pick on #3 who pops to the top of the key are for the open jump shot.

Oklahoma state Set play (9)

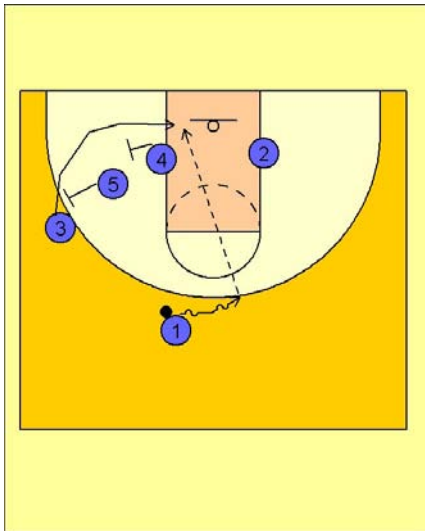


Oklahoma State Set Play vs. Man Defense

#1 starts to take the ball to the left side of the floor. #5 sets a down screen for #3 who pops out to the left wing.

This action will cause the defender to tighten up on #3 on the left wing which will help in the execution of the next set of movements.

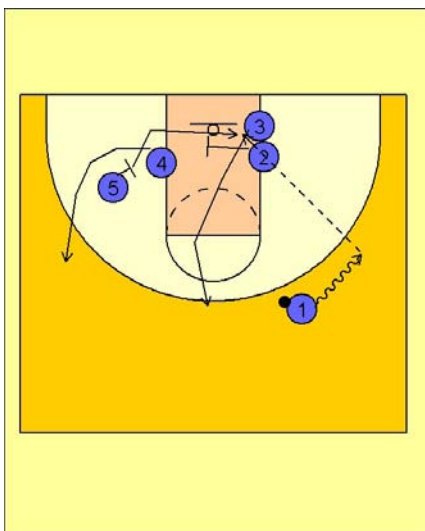
1



Oklahoma State Set Play vs. Man Defense

Once #3 is on the wing, #1 turns his dribble back towards the middle while #5 and #4 set a back screen for #3 cutting underneath the screens looking for a pass in the lane for a layup.

2



Oklahoma State Set Play vs. Man Defense

If #3 does not receive the ball he continues his cut to the right low block with #2.

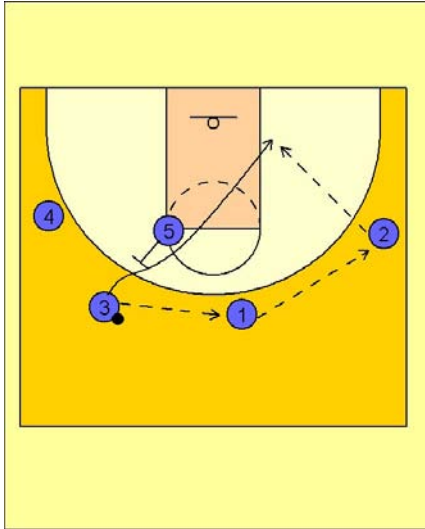
#1 then continues to dribble to the right wing while #5 sets a down screen for #4 and then cuts into the lane. #4 could also set a back screen for #5 in this play.

#5 receives a screen in the lane from #2 while #3 breaks up to the top of the key area. #1 then looks to feed the post player #5 on the right low block.

3

Oklahoma state Set play (8)

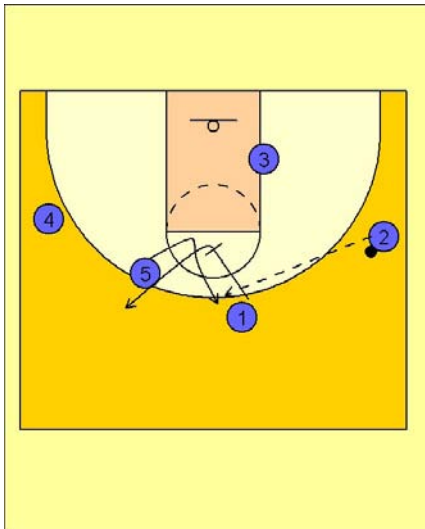
1



Oklahoma State Set Play vs. Man Defense

#3 passes the ball on top to #1 who passes the ball to #2 on the right wing. #5 sets a back screen for #3 who cuts to the ball side low block. #2 looks to make the pass to #3 is he is open.

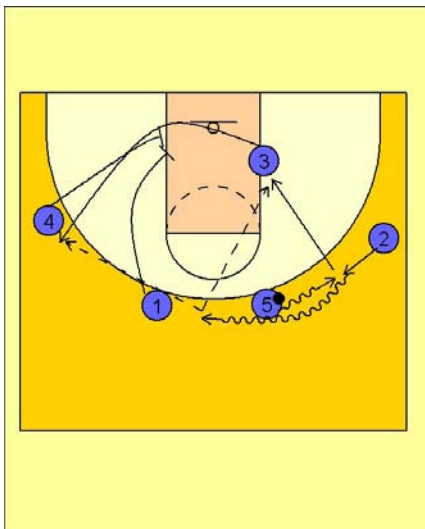
2



Oklahoma State Set Play vs. Man Defense

If #3 does not receive the ball, #1 has screened down for #5 getting him open to receive the ball reversal pass from #2. #1 has popped out after screening for #5.

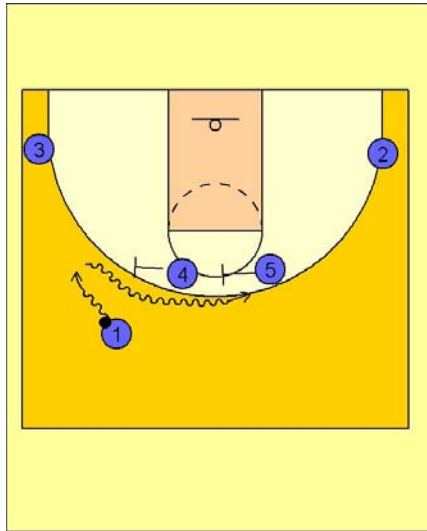
3



Oklahoma State Set Play vs. Man Defense

#5 now dribbles toward #2 for the dribble hand-off while #4 and #1 are setting up for a double screen on the left low block. As #2 takes the dribble hand-off and takes the ball to the top of the key area, #3 is coming off the double screen and #5 is rolling to the basket. #2 will look to make the pass to either #3 or #5.

Oklahoma state Set play (7)

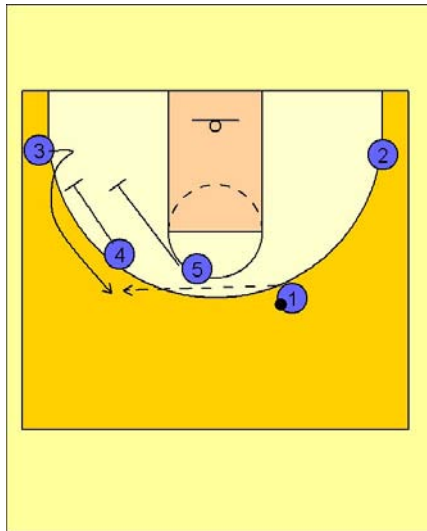


Oklahoma State Set Play vs. Man Defense

#2 and #3 are spread out wide and deep.

#4 and #5 set a double staggered ball screen for #1 across the top of the key area.

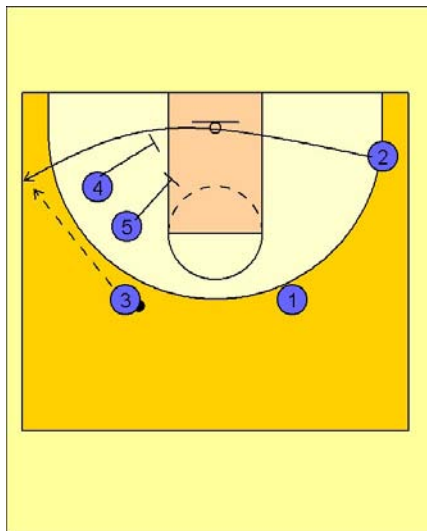
1



Oklahoma State Set Play vs. Man Defense

After #1 gets over the double screen, #4 and #5 double screen away for #3 on the left wing.

2



Oklahoma State Set Play vs. Man Defense

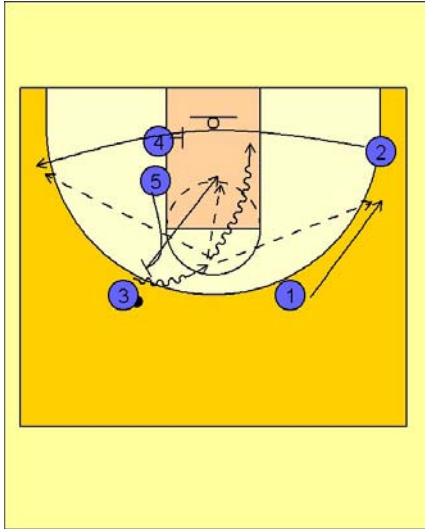
If #3 does not have a shot, #4 and #5 set a double screen on the left low block for #2 cutting out to the left wing / corner area.

3

Oklahoma state Set play (7)

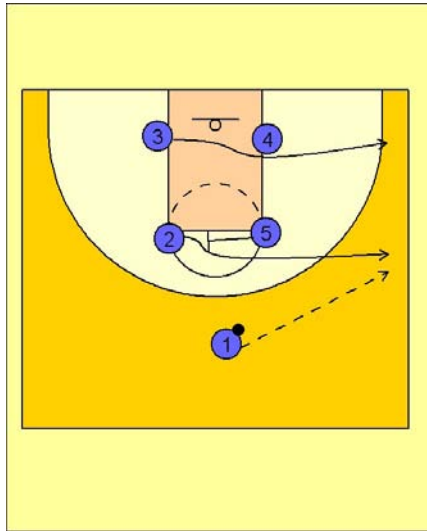
4

Oklahoma State Set Play vs. Man Defense



Another option at the end of this play is for #5 to move up out of the double screen and set a ball screen for #3. #2 now uses a single screen to get open on the left wing / corner. #3 can use the ball screen to get into the paint to score, drive and kick out to #1 or look for #5 rolling to the basket.

Oklahoma state Set play (6)

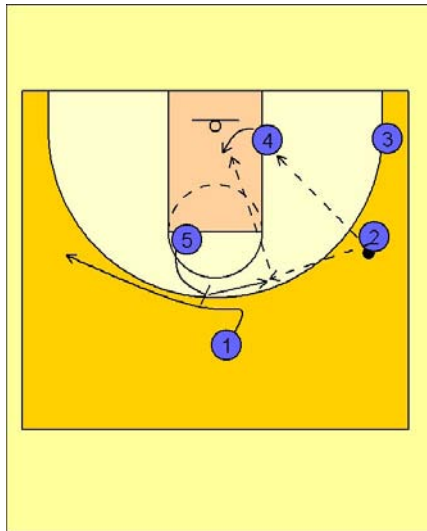


Oklahoma State Set Play vs. Man Defense

1

Box set to begin.

#5 screens across for #2. #1 enters the ball to #2 on the right wing. At the same time, #3 cuts to the ball side corner area.

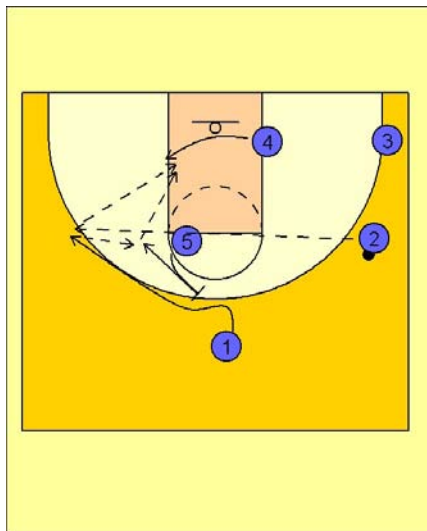


Oklahoma State Set Play vs. Man Defense

2

As soon as #1 passes to #2 on the right wing, #5 steps out and back screens #1's defender looking to free him for a skip pass on the back side of the floor.

#2 looks inside to #4 or to #5 stepping toward the ball after back screening for #1, looking to make the high / low pass to #4 down low.



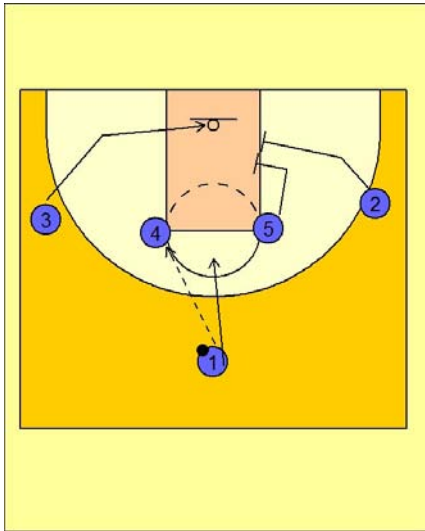
Oklahoma State Set Play vs. Man Defense

3

If #2 does make the skip pass to #1 on the left side of the floor, #4 cuts across the lane looking for post position on the left low block. #5 again steps toward the ball after screening looking to receive the pass from #1 and then look to make the high / low entry pass to #4.

Oklahoma state Set play (5)

1



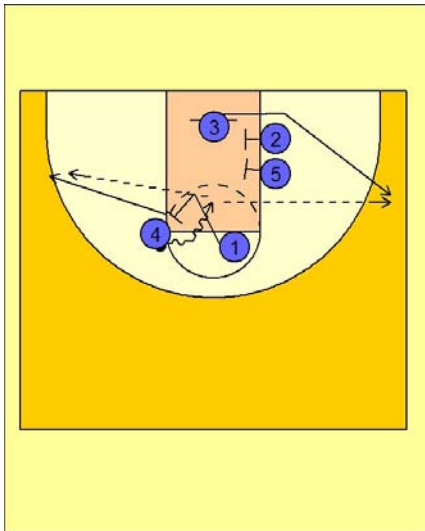
Oklahoma State Set Play vs. Man Defense

1 - 4 high set to begin.

#1 enters to #4 on the left ft line elbow area. #1 cuts to the ft line while #5 and #2 set up for a double screen on the right low block area.

#3 cuts into the middle of the lane.

2

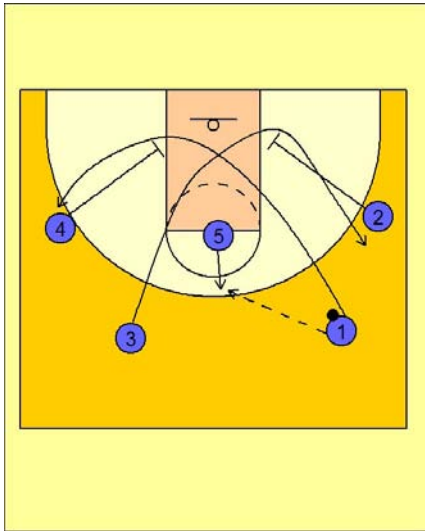


Oklahoma State Set Play vs. Man Defense

As #3 comes off the double screen from #2 and #5, #1 is setting a back screen for #4 as he looks to penetrate over the top of the screen and into the lane. #4 can score himself or look to hit #3 coming off the double or #1 breaking out after screening.

Oklahoma state Set play (4)

1



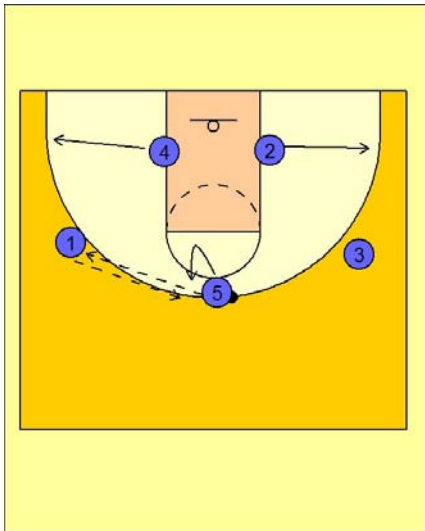
Oklahoma State Set Play vs. Man Defense

2 - 3 high set to begin.

#5 steps out to receive the entry pass from #1.

#2 and #4 move down to the blocks to set up for a down screen. #1 and #3 cut down and cross up off the screens from #2 and #4.

2

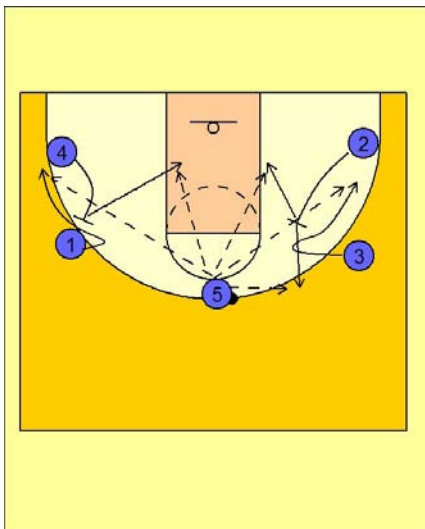


Oklahoma State Set Play vs. Man Defense

#5 passes the ball to #1. #4 and #2 step out to their respective wing / corner areas.

#5 cuts away and then back to receive the ball from #1.

3

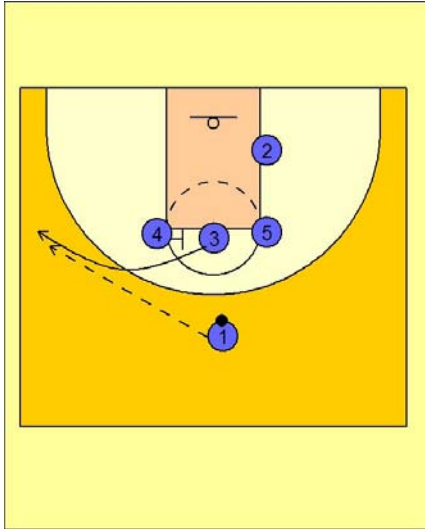


Oklahoma State Set Play vs. Man Defense

Once #5 has the ball, #4 and #2 back screen for #1 and #3. #1 and #3 fade to their respective wing areas looking for the skip pass from #5. The screeners, #4 and #2, can either roll to the basket or pop out depending upon how they are defended and their shooting range. #5 has to make the best, quick decision on determining who will have the best shot opportunity.

Oklahoma state Set play (3)

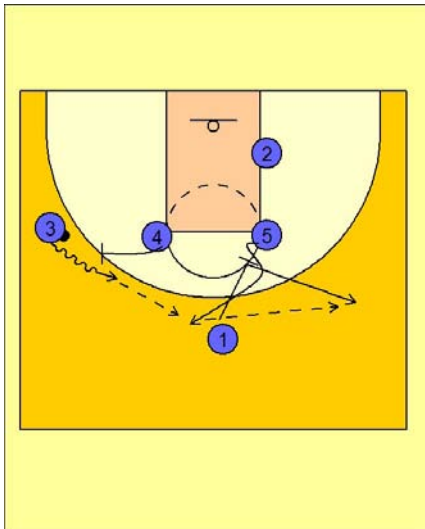
1



Oklahoma State Set Play vs. Man Defense

#4, #3 and #5 in a line across the free throw line to start. #4 screens for #3 who breaks out to receive the entry pass from #1 on the left wing.

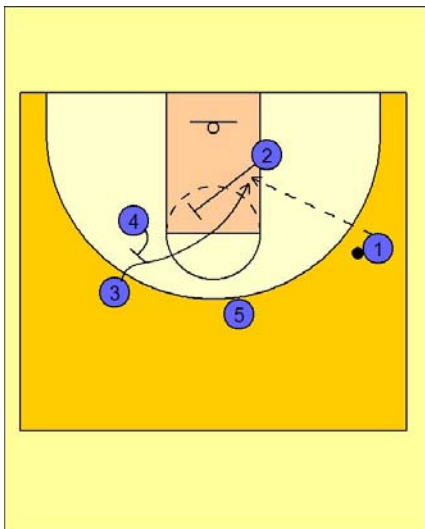
2



Oklahoma State Set Play vs. Man Defense

Once #3 has the ball, #4 moves out to ball screen for #3. #1 screens down for #3 and then breaks out to the right wing. #3 comes off the ball screen and passes to #5 on top. #5 then passes to #1 on the right wing.

3

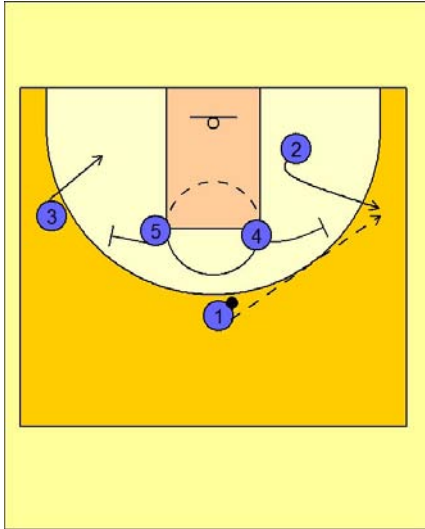


Oklahoma State Set Play vs. Man Defense

Once #1 has it, #2 sets a diagonal back screen along with #4 for #3 to cut to the right low block and the layup.

Oklahoma state Set play (2)

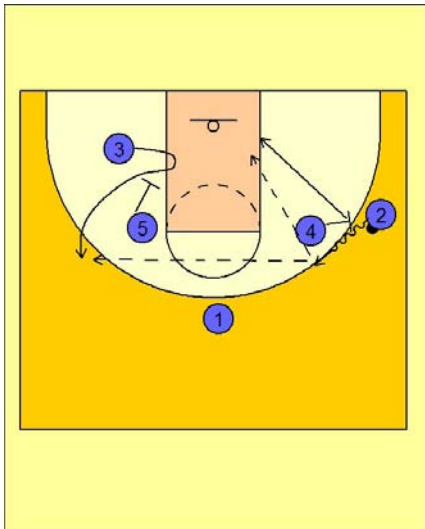
1



Oklahoma State Set Play vs. Man Defense

#2 cuts out to the right wing. #4 moves out to get in position for a screen. #3 moves down to the low block area while #5 gets in position to set a screen. #1 passes to #2 on the right wing.

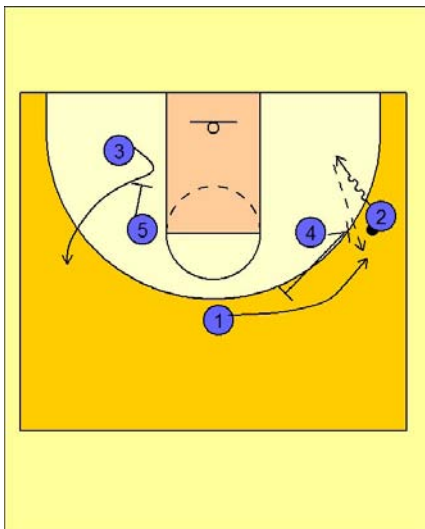
2



Oklahoma State Set Play vs. Man Defense

#4 ball screens for #2 while #5 is down screening for #3. If #2 comes off the ball screen high he will look for #3 coming off the down screen on the back side or he will look for #4 rolling to the basket.

3



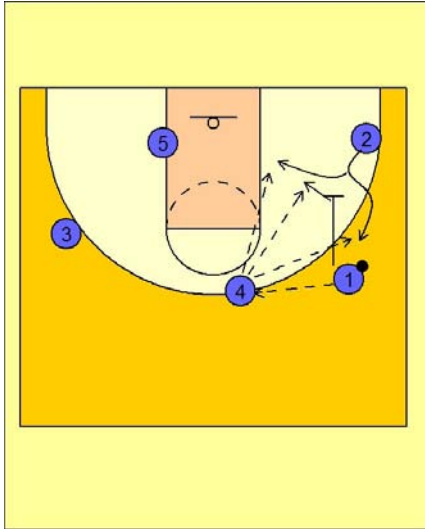
Oklahoma State Set Play vs. Man Defense

If he decides to cut low off the ball screen, #4 will turn and screen away for #1 on top. If #2 cannot score going right he will look to pass the ball back to #1 coming off of #4's screen.

Oklahoma state Set play (2)

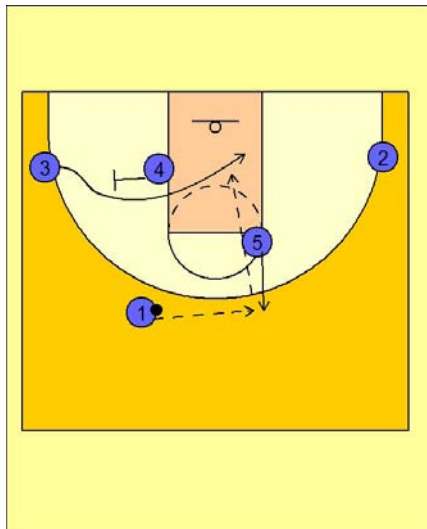
4

Oklahoma State Set Play vs. Man Defense



Once #1 gets the ball he passes to #4 on top. After passing to #4, #1 down screens for #2 in the right corner. #2 can fake low and come off high over the screen or he can fake high and cut low towards the basket. If #2 comes up high off the screen, #1 can cut to the basket looking for the pass from #4 if he is open because his man helped on the screening action.

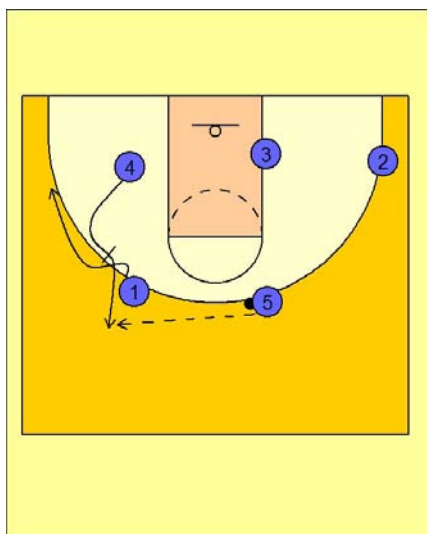
Oklahoma state Set play (1)



Oklahoma State Set Play vs. Man Defense

#1 passes to #5 who has stepped out on the perimeter. As #5 catches the ball, #4 steps out and back screens for #3 who cuts over the top and through the lane looking for the quick hitting entry from #5.

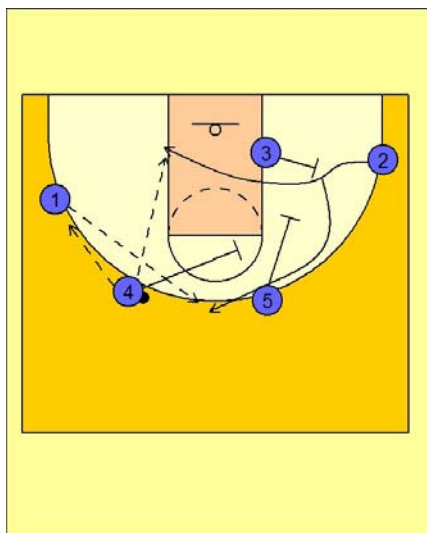
1



Oklahoma State Set Play vs. Man Defense

#4 back screens for #1 and #1 fades to the back side of the floor. After screening, #4 pops out and receives the pass from #4.

2



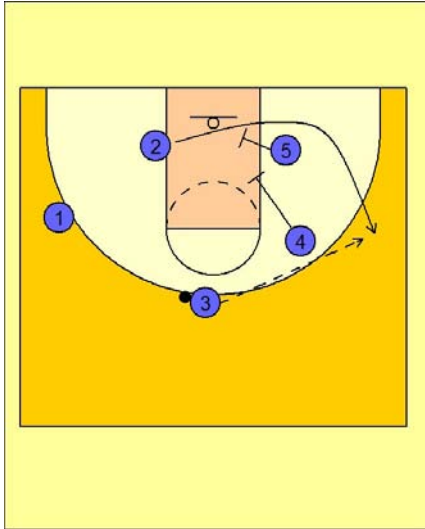
Oklahoma State Set Play vs. Man Defense

#4 then passes to #1. #3 back screens for #2 and then #5 and #4 down screen for #3. #3 comes up to the top looking for the pass from #1. #1 first look is for #2 cutting over the top of #3's screen.

3

Oklahoma state Set play (1)

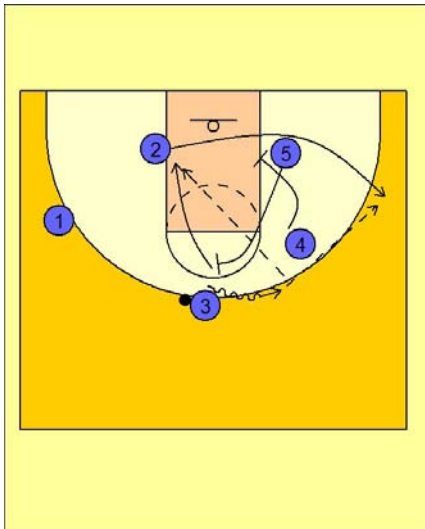
4



Oklahoma State Set Play vs. Man Defense

Once #3 has the ball on top, #5 and #4 now set a double staggered screen for #2 popping out to the right wing area for the open jumper.

5



Oklahoma State Set Play vs. Man Defense

A nice option at the end of this play is for #5 NOT to set the double staggered with #4 and instead move up to the top to set a ball screen for #3. As #3 uses the ball screen, #2 is coming out to the right side off the single screen from #4. Since #2 has just cleared out the low back side area, #5 can roll to the open basket after screening for #3, looking for the pass and layup.

You could experiment with #4 setting the ball screen instead, but I like the "X" action that #5 and #4 create when setting their screens as the conclusion to the play begins.

Oklahoma state Quick hitter (9)

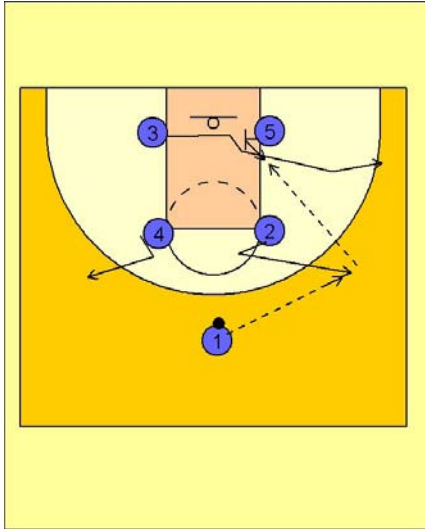
1

Oklahoma State Quick Hitter vs. Man Defense

Box set to begin.

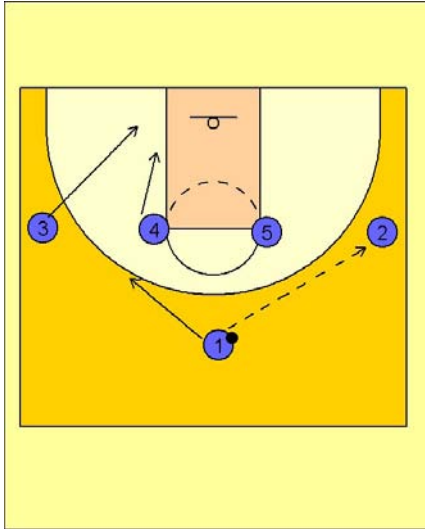
#2 and #4 break out to their respective wing areas. #1 enters the ball to #2 on the right wing. As this pass is made, #3 cuts to the corner off the screen from #5. As #5's defender looks to "hedge" and "help" on the screen, #5 then gets good post position on the right low block.

#2 feeds #5 in the right low block.



Oklahoma state Quick hitter (8)

1



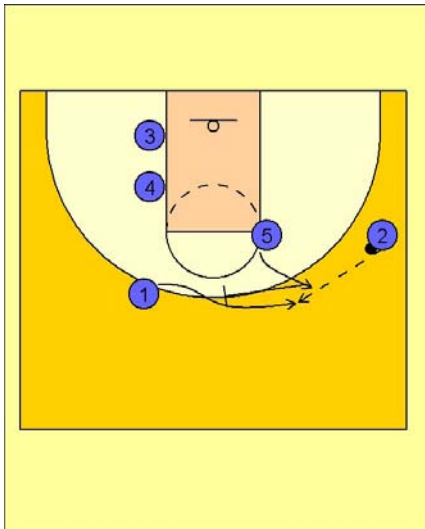
Oklahoma State Quick Hitter vs. Man Defense

OSU got a nice open three point shot at a critical point in the game vs. Texas Tech using this little quick hitter.

1 - 4 high across. #1 passes to #2 on the right wing.

#3 and #4 start to move down near the left low block as if to set up for a double screen. #1 also cuts away after passing to #2.

2



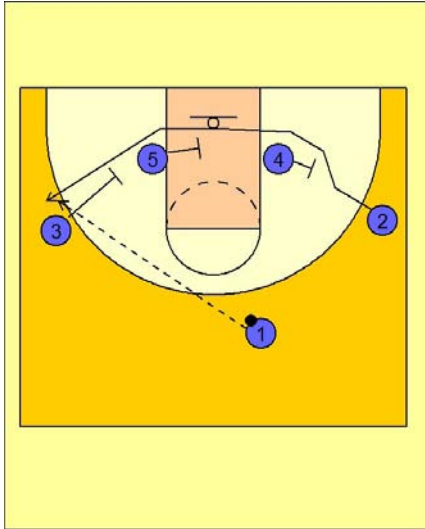
Oklahoma State Quick Hitter vs. Man Defense

#5 steps out as if to set up a ball screen for #2 on the right wing area and then quickly turns back and sets a screen on top for #1.

#2 looks to hit #1 for the quick three point shot.

Oklahoma state Quick hitter (7)

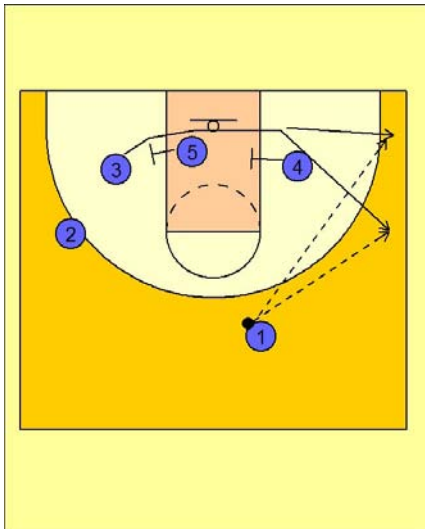
1



Oklahoma State Quick Hitter vs. Man Defense

#4, #5 and #3 set a triple screen for #2 across the baseline. #1 will look to hit #2 for the open jumper on the left side if he is open.

2

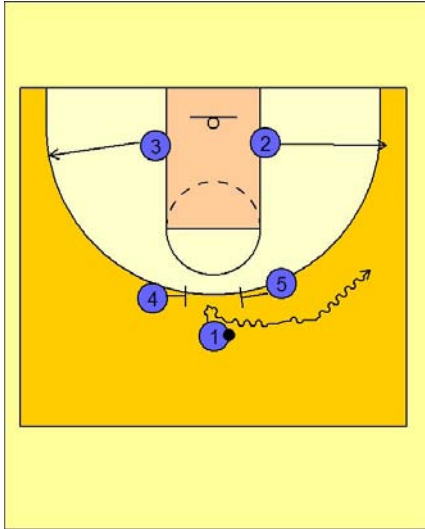


Oklahoma State Quick Hitter vs. Man Defense

If #2 is not open, #5 and #4 will turn around and set a double staggered screen for #3 breaking across the baseline trying to get an open jumper on the right wing / corner area.

Oklahoma state Quick hitter (6)

1

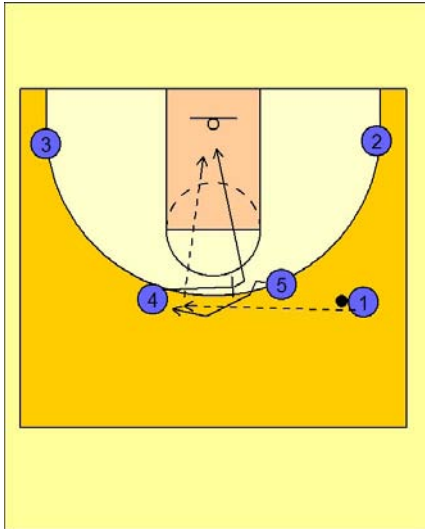


Oklahoma State Quick Hitter vs. Man Defense

Box set to begin.

#1 can drive off the screens from either #4 or #5. Here we see #1 take the ball to the right side off the ball screen from #5. #2 and #3 break out to their respective corner areas.

2

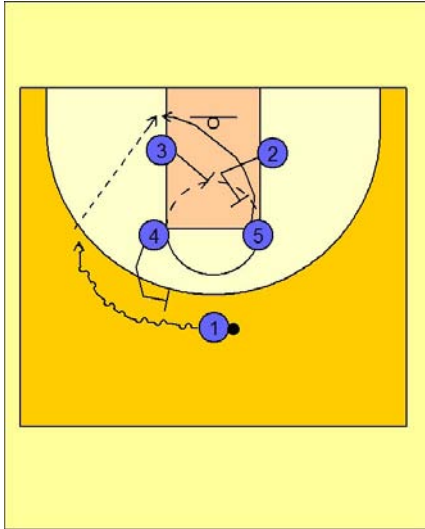


Oklahoma State Quick Hitter vs. Man Defense

After #1 comes off the screen with the ball, #4 sets a back screen for #5. #1 passes on top to #5 who looks to #4 rolling to the basket.

Oklahoma state Quick hitter (5)

1



Oklahoma State Quick Hitter vs. Man Defense

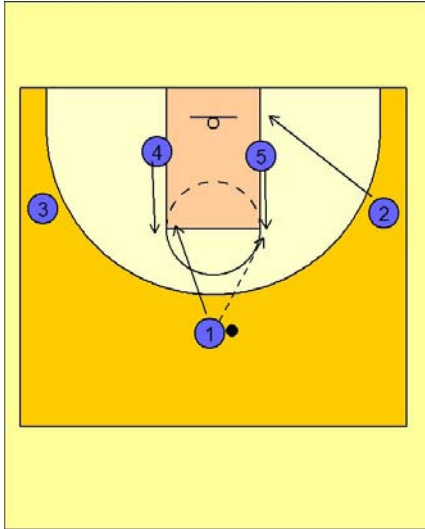
Box set to begin.

#4 steps out and ball screens for #1 who brings the ball over on the dribble to the left side of the floor.

As this ball screen action is taking place, #2 and #3 move up and set a double staggered diagonal back screen for #5 who breaks to the ball side low block looking for the post entry pass from #1.

Oklahoma state Quick hitter (4)

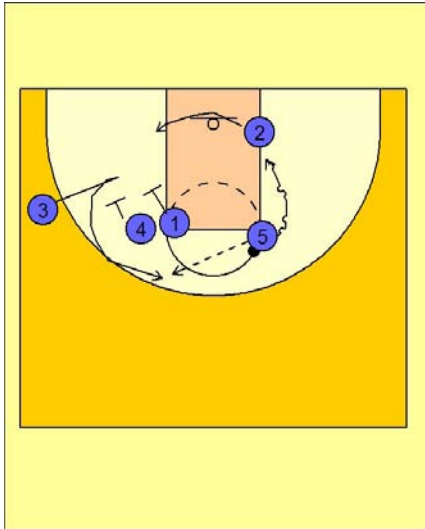
1



Oklahoma State Set Play vs. Man Defense

! - 4 high to begin with #4 and #5 flashing to the elbows. #1 enters the ball to #5. #2 cuts down to the low block area on the right side. #1, after passing to #5, cuts in the high post elbow area next to #4.

2

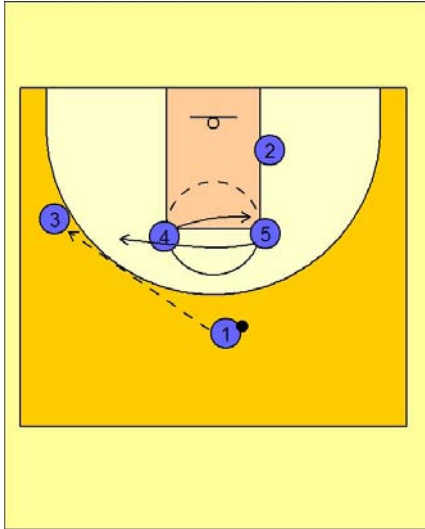


Oklahoma State Set Play vs. Man Defense

#1 and #4 set a double screen for #3 while #2 clears out. #5 can hit #3 coming off the double or he can turn and take the ball to the basket that has just been cleared out by #2.

Oklahoma state Quick hitter (3)

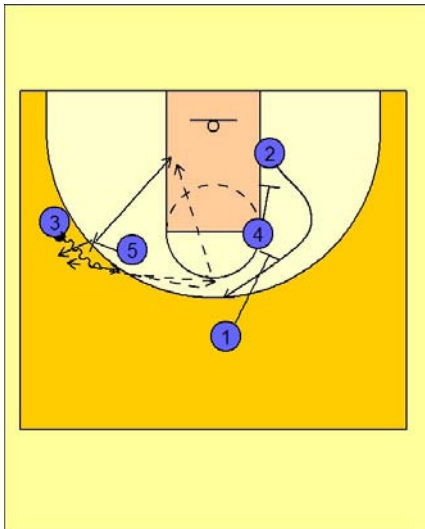
1



Oklahoma State Quick Hitter vs. Man Defense

#1 enters to #3 on the left wing. #4 switches positions with #5. #5 moves out a bit farther towards #3 to set up for a ball screen.

2

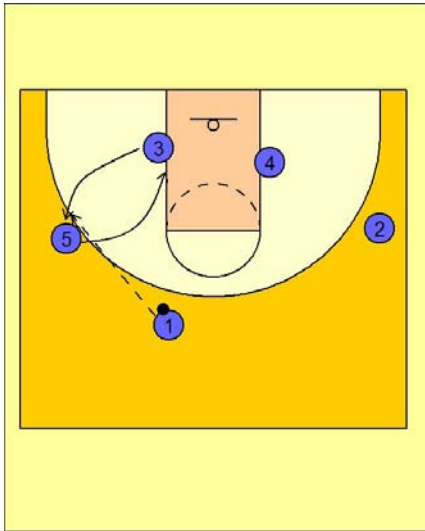


Oklahoma State Quick Hitter vs. Man Defense

#5 ball screens for #3 while #4 and #1 set a double staggered down screen for #2 on the right side. #3 comes off the ball screen high looking to score, hit #2 coming off the screens or look for #5 rolling to the basket or popping out, depending on how he is being covered and his shooting range.

Oklahoma state Quick hitter (2)

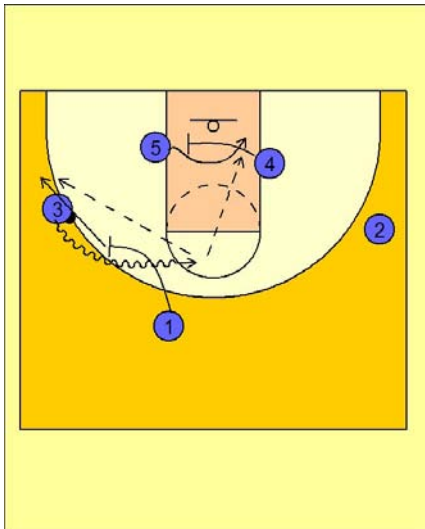
1



Oklahoma State Quick Hitter vs. Man Defense

#5 and #3 exchange spots with #1 hitting #3 on the left wing. You could obviously down screen in this situation as well.

2

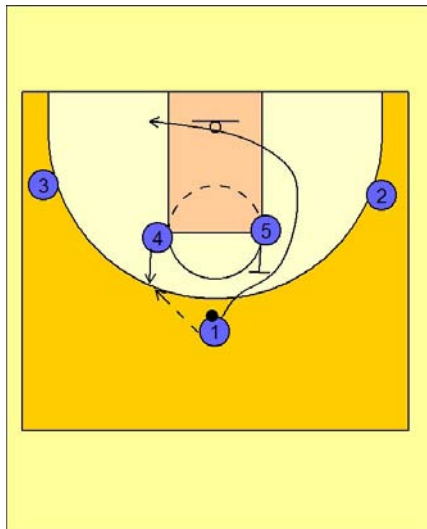


Oklahoma State Quick Hitter vs. Man Defense

Once #3 has the ball, #1 sets a ball screen for #3. As #3 comes over the top of the ball screen from #1, #4 is moving into the lane to set a screen for #5. #3 looks for #5 inside or #1 popping out to the left wing after screening.

Oklahoma state Quick hitter (1)

1

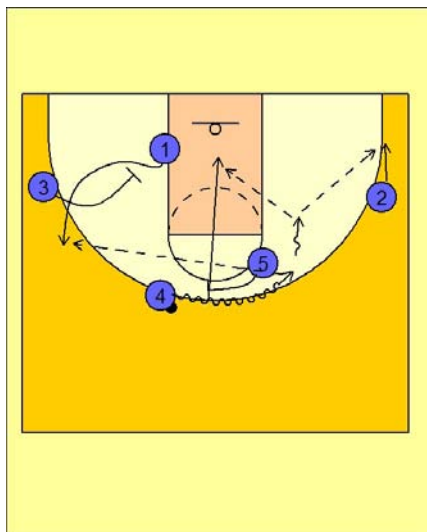


Oklahoma State Quick Hitter vs. Man Defense

1 - 4 high set to begin.

#4 steps out and receives the entry pass from #5. #1 then cuts through the lane off the back screen from #5. #1 cuts down the lane and over to the low block on the ball side.

2

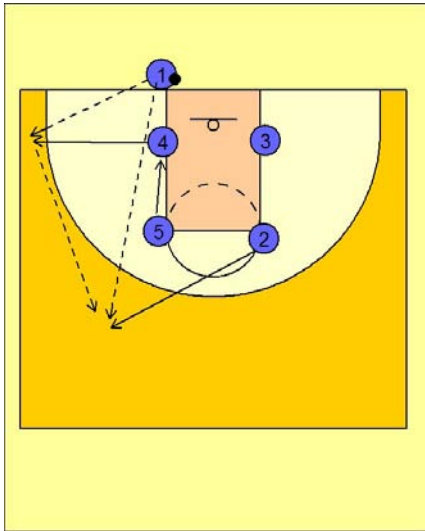


Oklahoma State Quick Hitter vs. Man Defense

#4 now uses a ball screen from #5. As #4 comes over the top of the ball screen from #5, #4 looks to drive it in the gap looking to score if it is available. He also has #2 spotting up for the kick out on the right side. If #4 does not turn the corner over the ball screen he can turn back and look for #1 popping out off the down screen from #3.

Oklahoma state Ob under vs. zone (1)

1

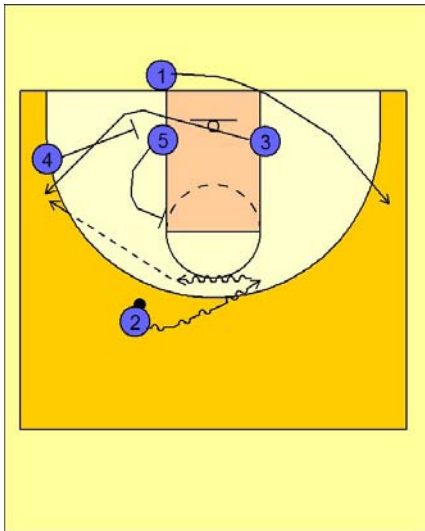


Oklahoma State OB Under vs. Zone Defense

Box set to begin.

#4 breaks out to the ball side corner. #2 breaks up to the top. #1 may hit #4 in the corner who will then pass to #2 on top or #1 may pass it straight out to #2 on top. #5 slides down when #4 breaks out to the corner.

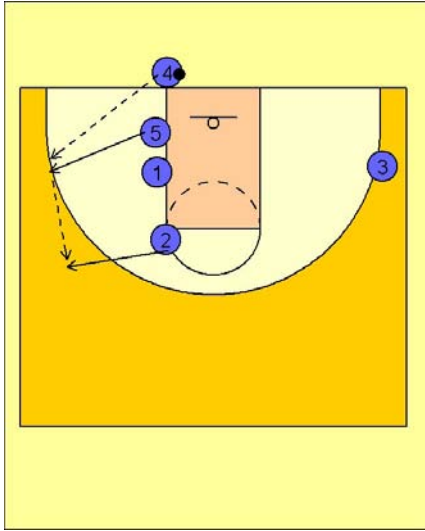
2



Oklahoma State OB Under vs. Zone Defense

#2 takes the ball towards the right side of the floor while #1 steps in and breaks out to the right wing. This is a decoy action as #2 will then turn his dribble in the other direction while #4 and #5 screen the back side of the zone while #3 breaks out to the left wing looking for the pass from #2.

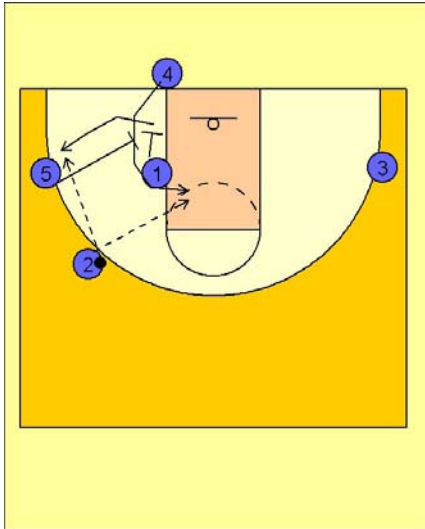
Oklahoma state Ob under vs. man (4)



Oklahoma State OB Under vs. Man Defense

#5 breaks out to receive the entry pass from #4. #2 delays his break a bit and then breaks out to the left wing to receive the next pass from #5.

1

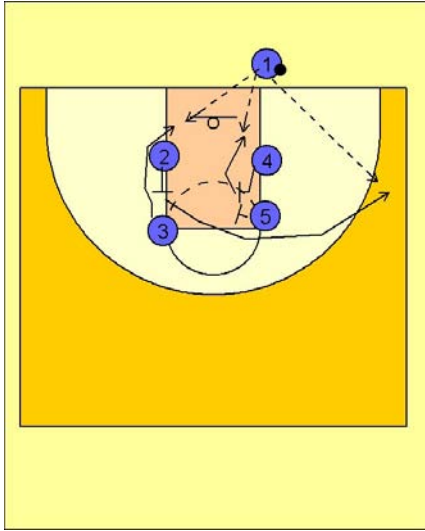


Oklahoma State OB Under vs. Man Defense

Once #2 has the ball, #1 screens down for #4 stepping in and over the top of the screen by #1. #2 looks inside to #4. #1 then pops out to the left wing / corner area off the down screen from #5.

2

Oklahoma state Ob under vs. man (3)



Oklahoma State OB Under vs. Man Defense

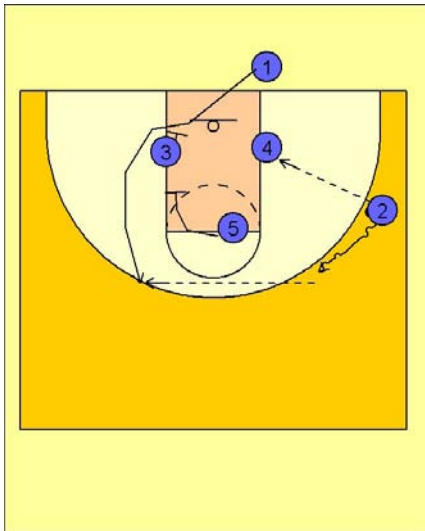
Box set to begin.

#2 moves up and sets a backscreen for #3.

#3 cuts to the basket and looks for the quick inbounds pass from #1.

#2, after backscreening, comes off a double screen from #4 and #5. #1 looks to hit #2 on the right wing or #4 cutting to the basket after screening.

1

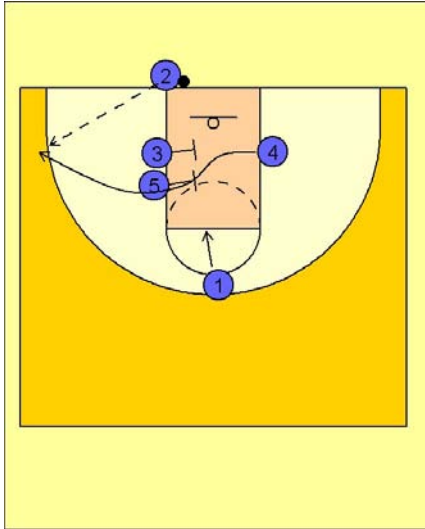


Oklahoma State OB Under vs. Man Defense

Once #2 has it, #4 will post on the ballside low block while #1 steps inbounds and comes off a double screen from #3 and #5.

2

Oklahoma state Ob under vs. man (2)

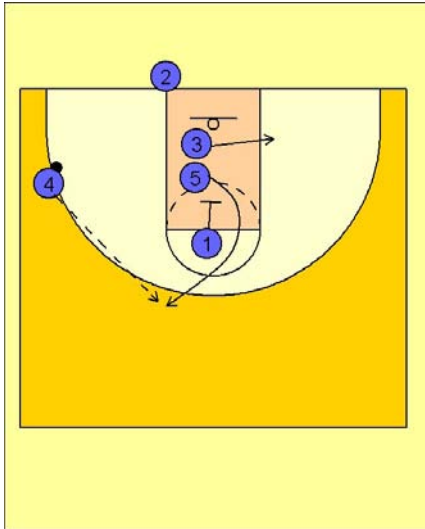


Oklahoma State OB Under vs. Man Defense

#3 and #5 screen across for #4 who breaks out to the ball side corner area to receive the entry pass from #2.

#1 moves into the FT line area.

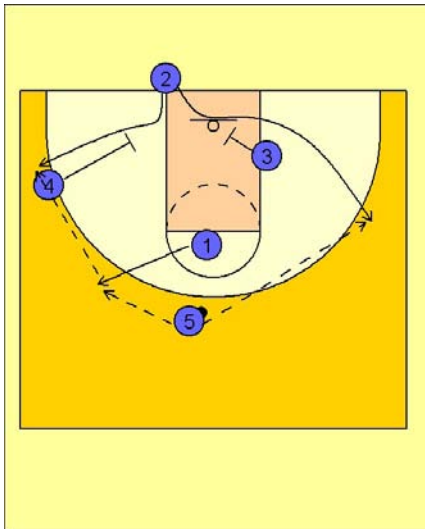
1



Oklahoma State OB Under vs. Man Defense

Once #4 has the ball, #3 moves over to the right block while #1 down screens for #5. #5 pops out to the top and receives the pass from #4.

2



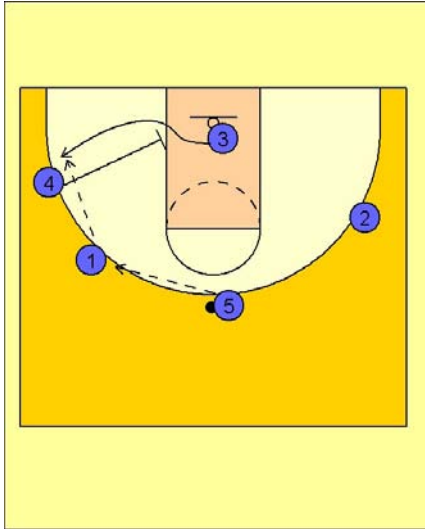
Oklahoma State OB Under vs. Man Defense

#2 now steps in and receives a single screen out to the right or left side of the floor and looks for the open jumper. #1 pops out to either side on top.

3

Oklahoma state Ob under vs. man (2)

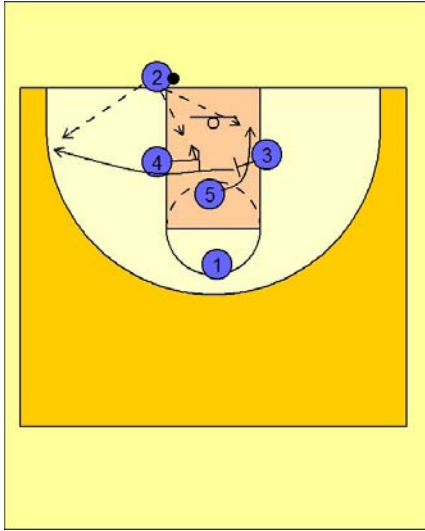
4



Oklahoma State OB Under vs. Man Defense

If #2 is not open, #5 passes over to #1 who looks for #3 coming off the single down screen from #4. You could easily add the option of having #1 and #4 set a double staggered screen for #3 as well in this situation.

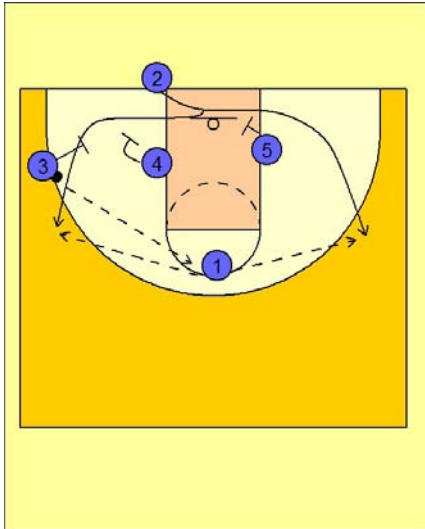
Oklahoma state Ob under vs. man (1)



Oklahoma State OB Under vs. Man Defense

The play starts with #3 screening for #5 who cuts around the screen looking for the quick hitting entry pass from #2. #4 then screens the screener, #3, and #3 breaks out to the ball side corner area. #2's second option is to hit #3 in the corner.

1

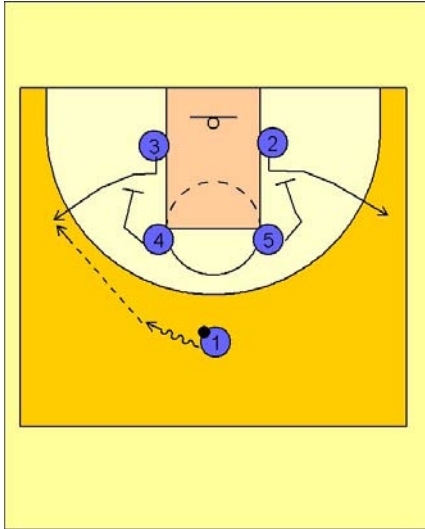


Oklahoma State OB Under vs. Man Defense

Once #3 has it he reverses the ball on top to #1. #2 then steps in and can use the single screen on the right side from #5 or he can use the double staggered screen from #4 and #3 on the left side.

2

Oklahoma state Half court offense (2)

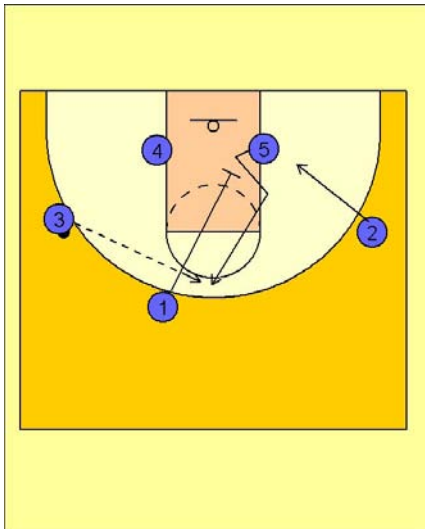


Oklahoma State Half Court Offense

1 - 2 - 2 alignment to begin.

The offense starts with #4 and #5 downscreening for #3 and #2. #1 picks a side and enters the ball to the wing player.

1

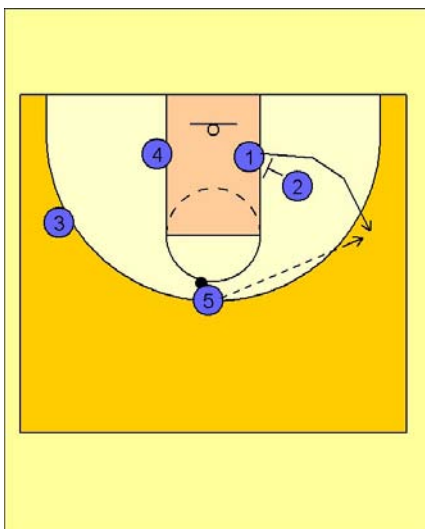


Oklahoma State Half Court Offense

Once #1 passes to #3, he cuts down in the lane and sets a downscreen for #5. As this is happening, #2 is moving down to set up the next screening action.

#5 breaks to the top and receives the pass from #3.

2



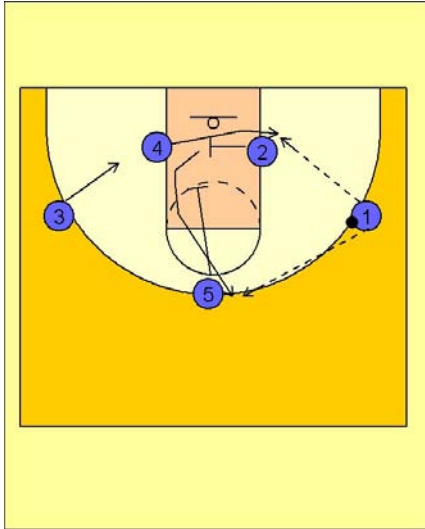
Oklahoma State Half Court Offense

#2 now "screens for the screener" and tries to get #1 open on the right wing. #5 passes to #1 on the right wing.

3

Oklahoma state Half court offense (2)

4

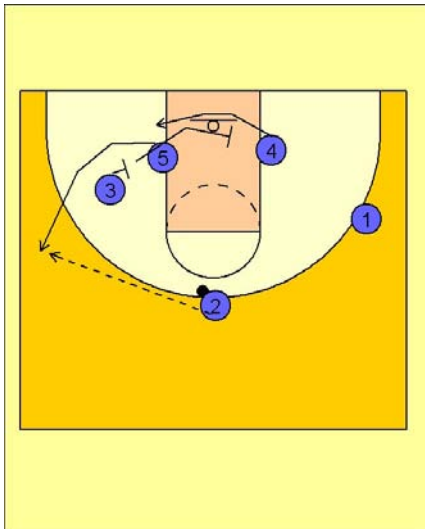


Oklahoma State Half Court Offense

As #1 catches the ball, #2 continues his motion across the lane and sets a screen for #4, bringing him to the ball side low block area looking for the post entry pass from #1.

#2, after screening for #4, gets a down screen from #5 and breaks to the top. As in the previous diagram, the wing player #3, begins to move down to the low block to set up the next screening action on the other side of the floor.

5

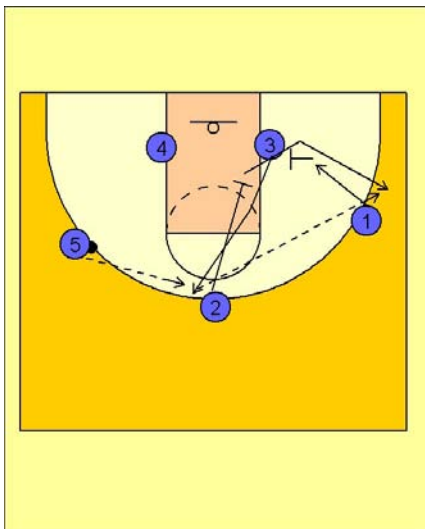


Oklahoma State Half Court Offense

Once #2 has it on top, #5 now breaks up to the left wing off the down screen from #3.

#3, as in the previous diagram, continues his screening direction across the lane and screens for #4, bringing him to the ball side low block.

6



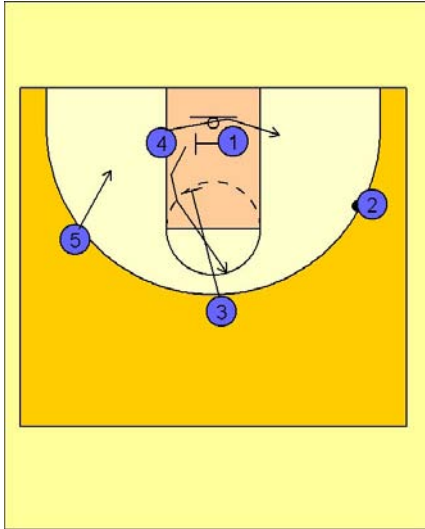
Oklahoma State Half Court Offense

#2, who just passed to #5 on the left wing, now cuts down into the lane and screens for the opposite block player, #3.

#3 breaks up to the top while #1 now moves down to set up the next screening action and "screens for the screener" #2. #2 breaks out to the right wing to receive the next pass from #3.

Oklahoma state Half court offense (2)

7



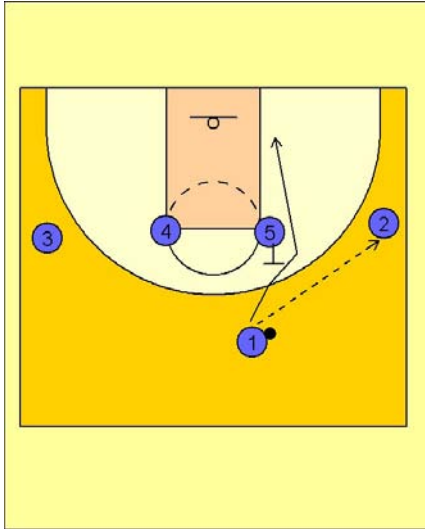
Oklahoma State Half Court Offense

And the offense continues....

#1 continues his screening action across the lane screening for #4, bringing him to the ball side low block area.

#3, who just passed to #2 on the right wing, sets a down screen for the opposite low block man, #1. #1 breaks to the top to receive the reverse pass from #2 while #5 moves down the lane to set up the next screening action.

Oklahoma state Half court offense (1)



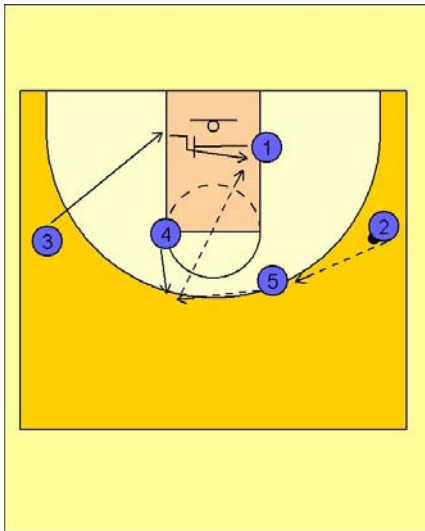
Oklahoma State Half Court Offense

Here is Oklahoma State's entry into their flex offense.

1 - 4 high alignment to start.

#1 passes to #2 on the right wing and then uses the "ucla cut" with a back screen from #5 to move to the right low block.

1

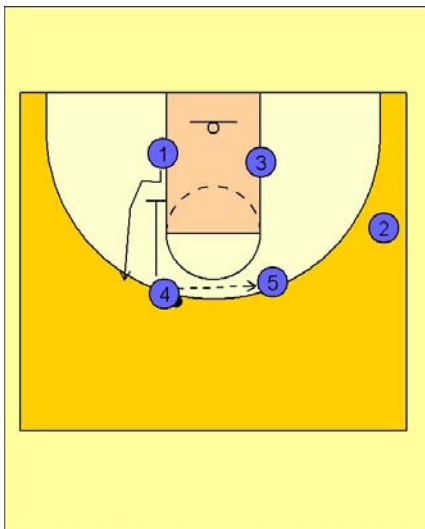


Oklahoma State Half Court Offense

#2 reverses the ball to #5 on top. #4 steps out to receive the next pass from #5 while #3 moves down to the left low block area.

As #4 is catching the basketball, #1 is screening across for #3. #3 comes over the top of the screen looking for the entry pass inside from #4.

2

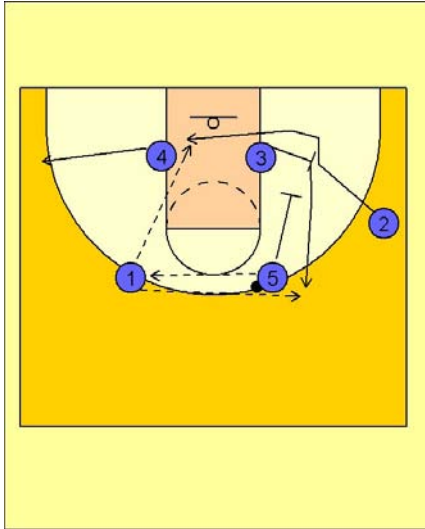


Oklahoma State Half Court Offense

If #3 is not open, #4 reverses the ball to #5 on top and #4 down screens for #1.

3

Oklahoma state Half court offense (1)

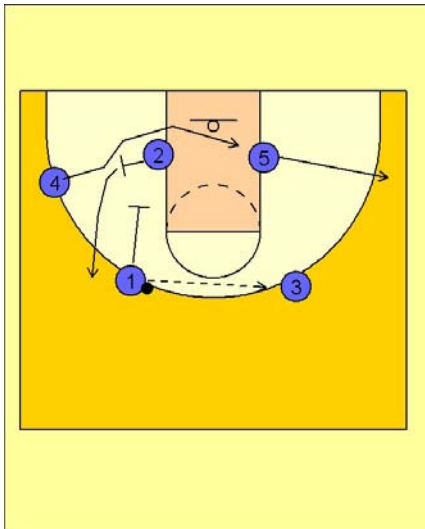


Oklahoma State Half Court Offense

4

#5 then passes to #1 on the left side while #4 steps out to the left wing / corner area and #2, #3 and #5 begin the "flex action" on the right side of the floor.

#3 back screens for #2 while #5 is down screening for the picker #3. #1 looks for #2 cutting underneath. If #2 is not open, #1 will reverse the ball to #3 on the right side of the floor.



Oklahoma State Half Court Offense

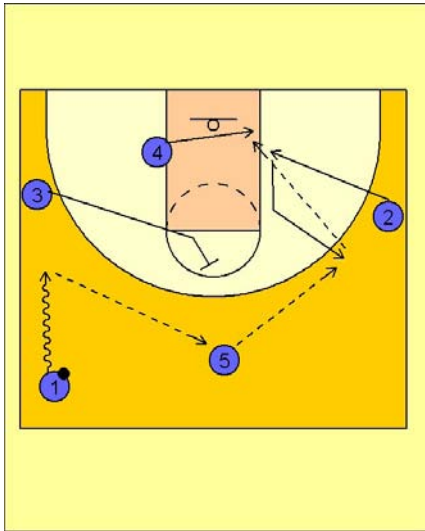
5

Now the "flex action" is repeated on the left side of the floor.

When #1 passes to #3, #5 steps out to the ball side wing / corner area, #2 back screens for #4 and #1 down screens for #2.

Oklahoma state Early offense (5)

1



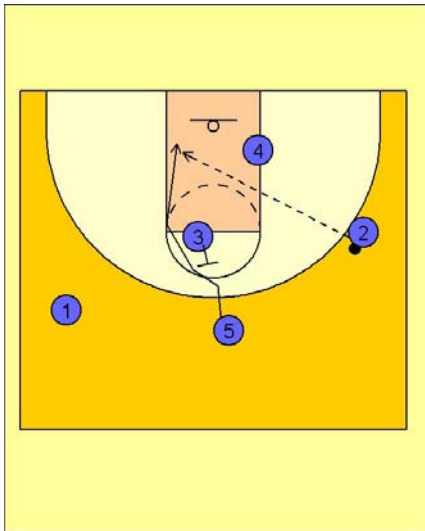
Oklahoma State Early Offense

#1 drives the ball up the sideline. #1 then reverses the ball to #5 on top. As #1 was driving the ball up the left sideline, #2 on the opposite sideline was taking his man down towards the right low block area.

As the ball is reversed, #2 steps up the lane and then breaks out to receive the next pass on the right wing from #5. #2 looks for #4 on the right block, who has just followed the ball across the lane.

As the ball is reversed to the top man #5, #3 moves in to set up for a back screen for #5.

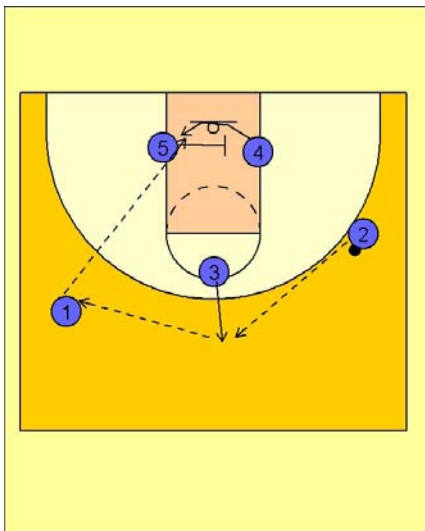
2



Oklahoma State Early Offense

Once #5 passes to #2 on the right wing, #5 uses the back screen from #3 and looks for the lob pass to the rim from #2.

3



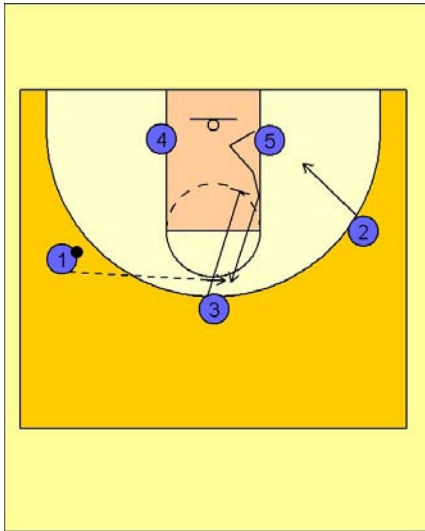
Oklahoma State Early Offense

After screening, #3 pops out to receive the pass from #2.

#3 catches and reverses the ball to #1 on the left wing. As this action is happening, #5 screens across for #4. #1 will look to feed #4 on the left low block.

Oklahoma state Early offense (5)

4

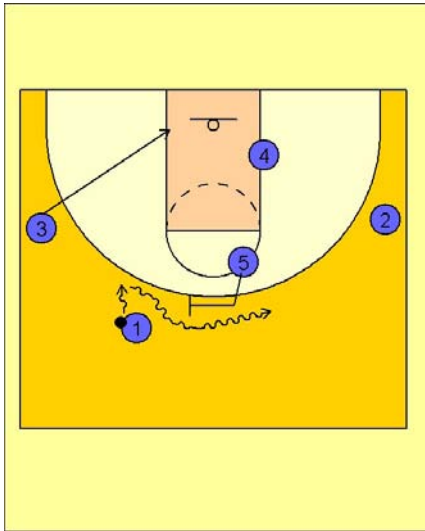


Oklahoma State Early Offense

From here OSU will go directly into their half court offense as diagramed in half court offense (2).

Oklahoma state Early offense (4)

1



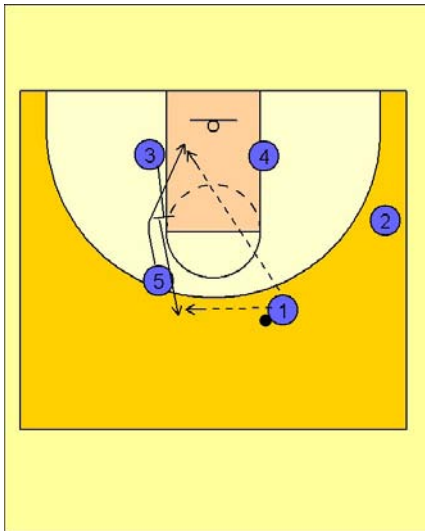
Oklahoma State Early Offense

#1 takes the ball down to the left side of the floor while #5 moves up to set the ball screen.

#3 moves down to the left low block.

#1 then takes the ball over the top of the ball screen by #5.

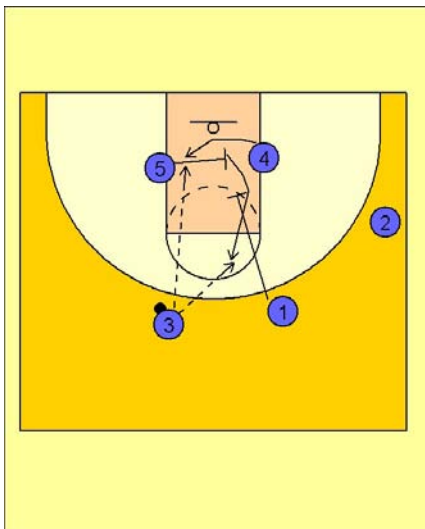
2



Oklahoma State Early Offense

#3 then back screens for #5. #1 looks for #5 going to the basket. If #5 is not open, #3 steps out to receive the next pass.

3

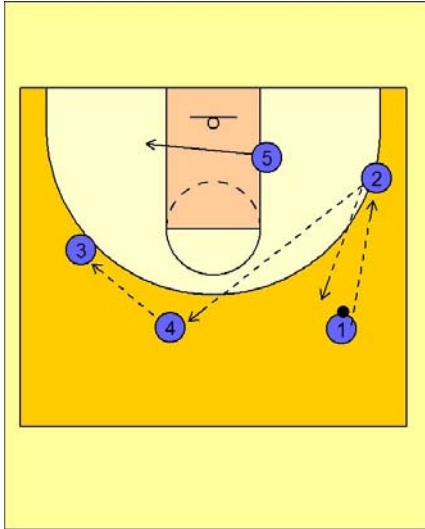


Oklahoma State Early Offense

Once #3 has the ball, #5 screens across for #4 on the blocks. #1 then screens down for #5 creating the pick the picker action trying to free #5 for a free throw line jumper.

Oklahoma state Early offense (3)

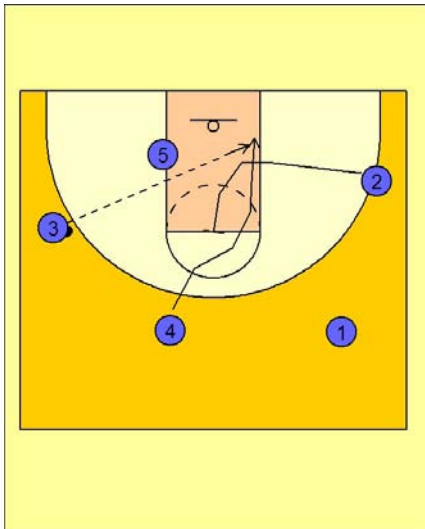
1



Oklahoma State Early Offense

Here is a nice adjustment to the usual North Carolina early offense. Oklahoma State executes the usual reverse pass on top so that the ball is on the other wing while the post player on the low blocks follows the ball across.

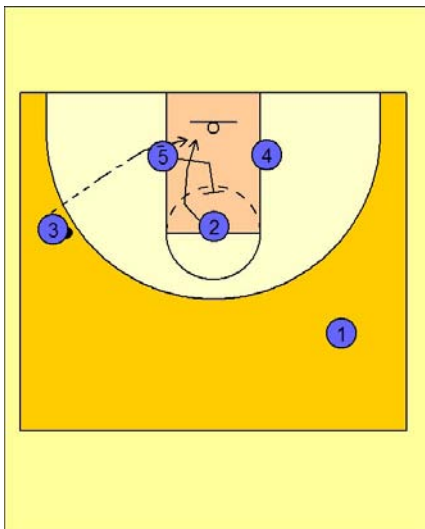
2



Oklahoma State Early Offense

As #3 catches the ball, #2 moves in and back screens #4 cutting to the basket for the lob pass from #3.

3



Oklahoma State Early Offense

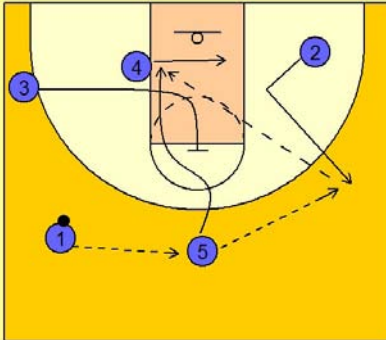
Here OSU adds a wrinkle by now back screening #2 if #4 didn't get the pass on the lob. #3 would then look inside to #2 cutting to the basket.

Oklahoma state Early offense (2)

1

Oklahoma State Early Offense

This is the standard North Carolina early offense.



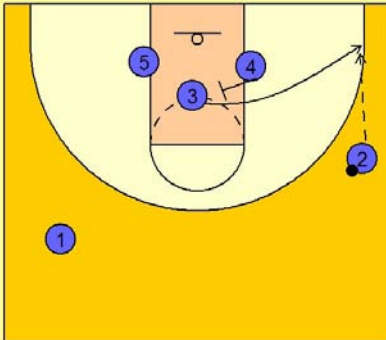
#1 takes the ball up the sideline and reverses the ball to #5 on top. #5 swings it to #2 on the right wing. #4 follows the ball across the lane while #3 moves into the middle of the lane and sets a back screen for #5 around the FT line.

#2 looks for #5 going to the basket.

2

Oklahoma State Early Offense

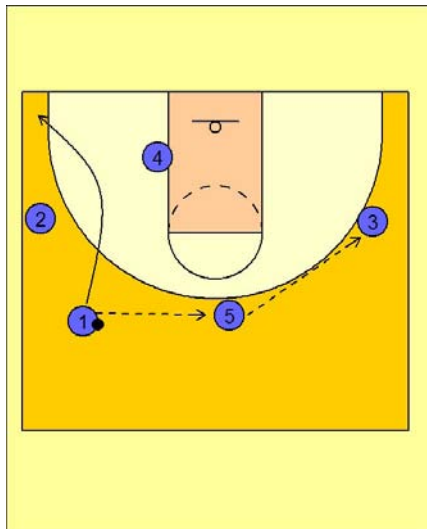
Teams will use one of two options here. Either #3 will pop out to the top and the team will get into their half court offense, or, they will do what Oklahoma State does here.



#4 screens for #3 breaking out to the ball side corner area for a jumper. If that is not there, OSU will set up in their half court offense or call a set play.

Oklahoma state Early offense (1)

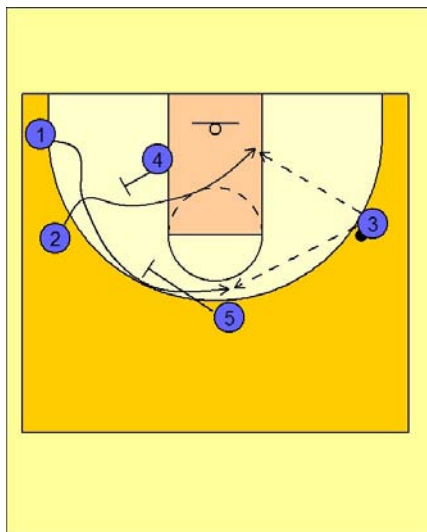
1



Oklahoma State Early Offense

#1 brings the ball up on the side and then reverses the ball to #5 on top who swings it to #3 on the right wing. #1 passes and cuts through to the opposite corner area.

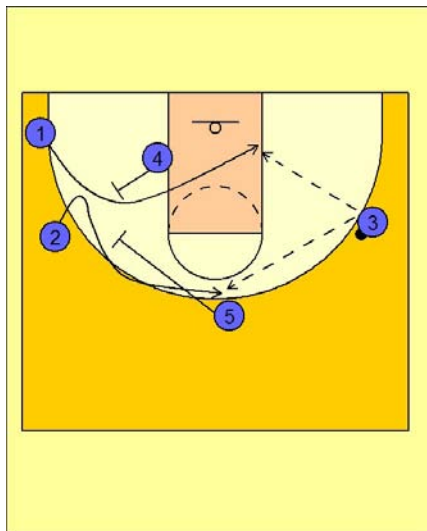
2



Oklahoma State Early Offense

#4 steps out and back screens for #2. #2 cuts through the lane first then #1 follows behind him coming up high off the down screen from #5. #3 hits #2 for the layup if he is open, if not, he passes the ball on top to #1.

3

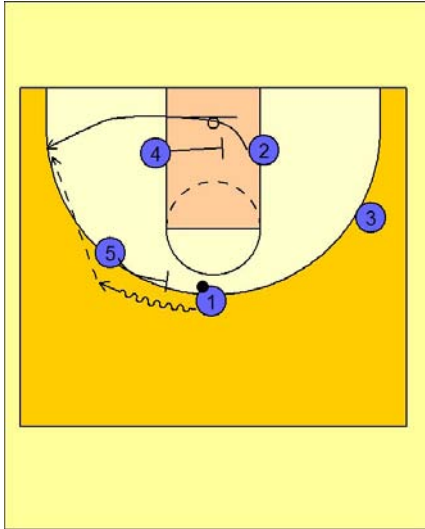


Oklahoma State Early Offense

As an option, #2 can fake cutting through and come up high off of #5's down screen while #1 then takes the back screen from #4 and cuts through the lane. #2 determines what option to use by making his decision first to cut through off the back screen from #4 or come up high off the down screen from #5.

Oklahoma state Early offense (1)

4

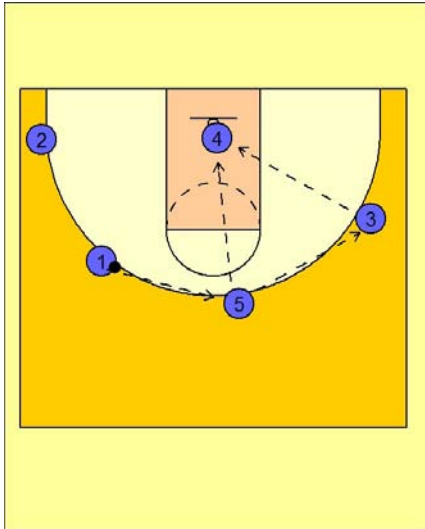


Oklahoma State Early Offense

We will assume the person cutting to the basket was not open and we reversed the ball on top to #1.

#1 now gets a ball screen from #5 while #4 moves into the lane to set a screen for #2 popping out to the corner area. #1 looks to hit #2 for the open wing / corner jumper.

5



Oklahoma State Early Offense

If that is not there, #1 reverses the ball on top to #5 who looks inside first to #4 pinning and sealing inside. If #4 is not open, he will pass it to #3 who will also look to feed the post. They will run their motion offense from here or call a quick hitting "shot clock" play (which for most teams is a screen and roll on top for the point guard).