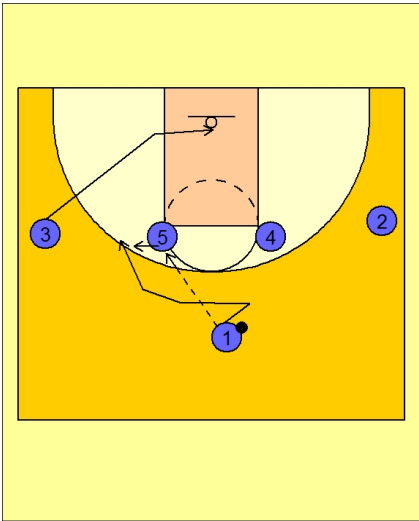


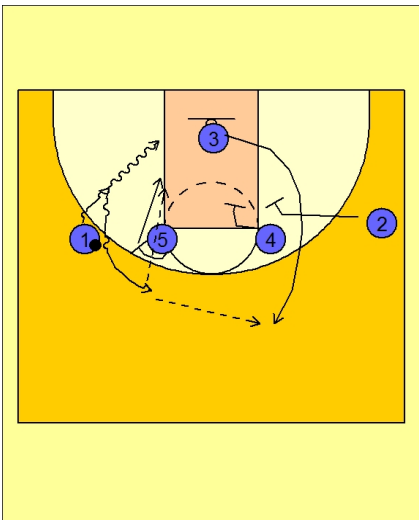
**Set play (16)****UCONN Set Play vs. Man Defense**

More and more teams are going to the 1-4 high set for their set plays. Use to be the box set, but now seems that more teams are using this alignment.

Play starts with #1 hitting the post player #5 with a pass.

#3 cuts back door and then under the rim.

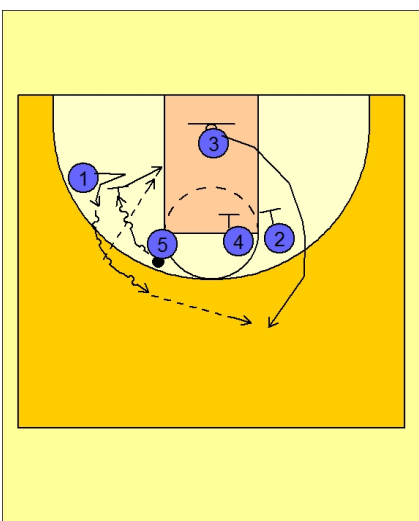
#1 fakes away and then cuts over #5 for the hand off.

**UCONN Set Play vs. Man Defense**

As #1 is going to get the ball from #5, #4 and #2 are setting up for a double screen for #3.

#1 has the option to attack the rim on the hand off as #3 is clearing out to the top.

#5 is also setting a ball screen for #1 if he chooses not to attack the rim. #1 will come off the ball screen from #5 and look either to post up #5 on the ball side block or hit #3 coming out on top for the open jumper.

**UCONN Set Play vs. Man Defense**

If #5 does not give the ball to #1 on the initial cut over the post, #1 will take his man down a few steps and then look for #5 to turn and attack his defender on the dribble hand-off / screen.

#1 would then take the ball and look for the shot or look to feed #5 rolling into the post. #1 again also has the option to hit #3 coming off the double screen.