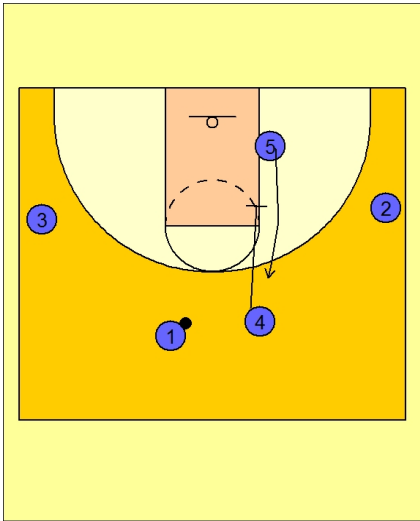
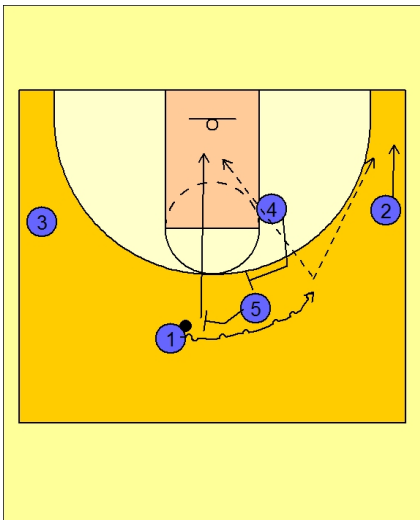


**Set play (17)****UCONN Set Play vs. Man Defense**

Play starts with #4 setting a down screen for #5 in the mid lane area.

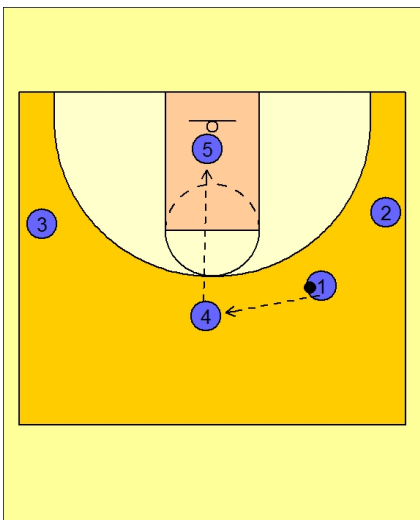
#5 breaks up to the top.

**UCONN Set Play vs. Man Defense**

Once #5 gets there, #1 now uses a double ball screen from #5 and #4.

#1 looks to attack and score off the double ball screen if available. If no scoring opportunity is available for #1, #2 is looking to spot up in the corner / wing area for the drive and kick action.

#5 is rolling to the basket after #1 drives off the first ball screen. #1 will look to #5 rolling to the rim.

**UCONN Set Play vs. Man Defense**

If #1 cannot hit #5 rolling to the basket because his defender is playing in front or on the high side, #1 will quickly reverse the ball to #4 on top and #5 will look to seal his defender inside to receive the high / low entry pass from #4.