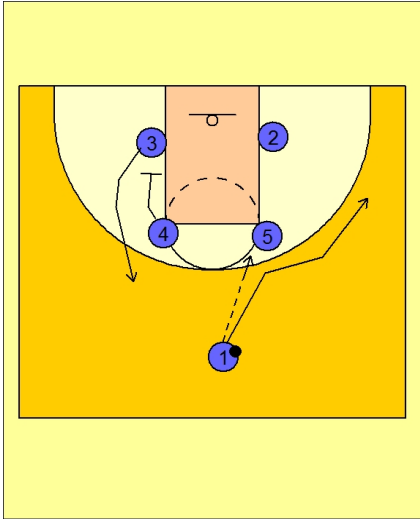


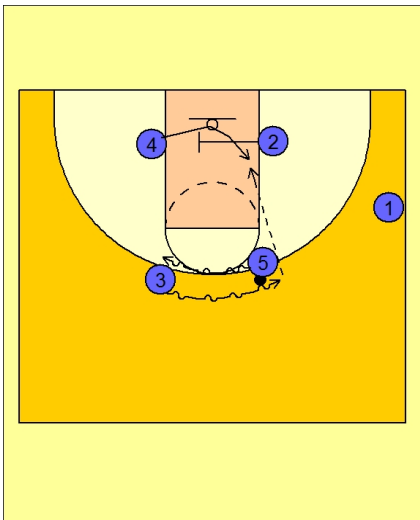
**Set play (18)****UConn Set Play vs. Man Defense**

Box set to begin.

#1 enters the ball to #5 stepping out.

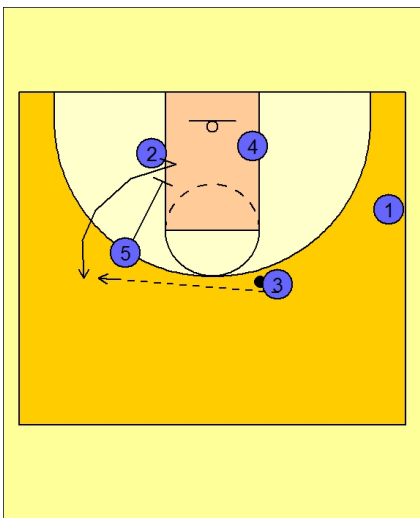
#1 cuts over the top of #5 to the right wing area.

#4 sets a down screen for #3.

**UConn Set Play vs. Man Defense**

#5 now executes a dribble hand-off with #3.

As #3 gets the ball, #2 is setting a screen in the lane (small on big, which is always good if they switch). #3 looks inside to #4.

**UConn Set Play vs. Man Defense**

If #4 is not open, #3 will reverse the ball to #2 breaking out to the top / wing area off the down screen from #5.



UCONN Set Play vs. Man Defense

If #2 does not have a shot, he will look to feed #5 inside.

#4 flashes to the high post to take away back side help and will also look to receive the high post entry pass and then dump the ball down to #5 sealing inside.

