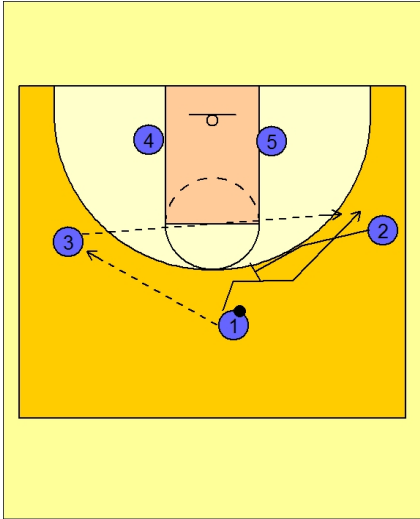
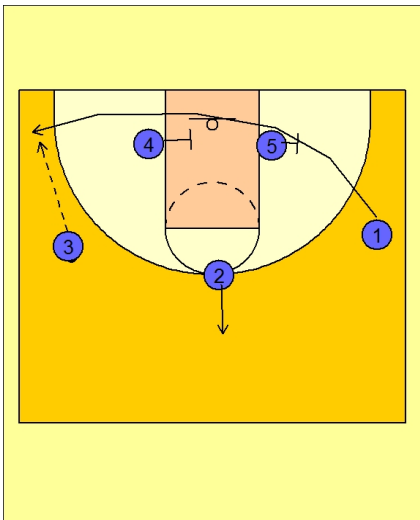


**Set play (19)****UCONN Set Play vs. Man Defense**

3 - 2 alignment to begin.

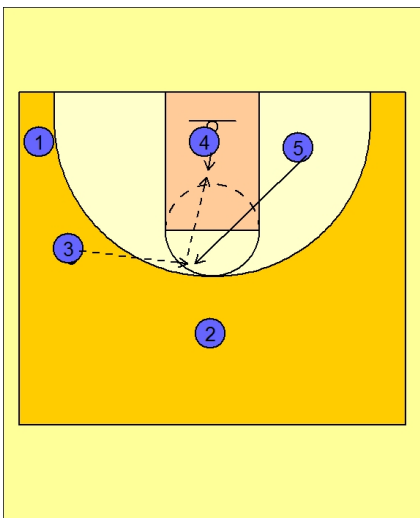
#1 enters to either wing. Here he passes to #3 on the left wing. #2 sets a flair screen on #1's defender. #1 cuts over the top to the right wing area looking for the potential skip pass and shot.

**UCONN Set Play vs. Man Defense**

We will first show you what happens if they don't make the skip pass.

#2 steps out after screening. #1 will now cut along the baseline with #5 and #4 stepping out and stepping in the lane to screen for #1.

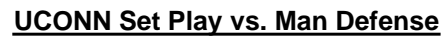
#3 looks to hit #1 in the corner if he is open.

**UCONN Set Play vs. Man Defense**

If #1 does not receive the pass, the play continues.

As soon as #1 cut off the back screen from #5, #5 flashes into the high post. #4 is already in the lane as he screened for #1.

#5 now receives the pass from #3 and looks to dump the ball down to #4 sealing under the basket.



If #3 passes to #1 off the flair screen, the play would continue the same in the other direction.

#4 now flashes to the high post while #5 is sealing inside.

Great action in both directions if you have two good inside post players you would like to isolate for the high / low entry pass.