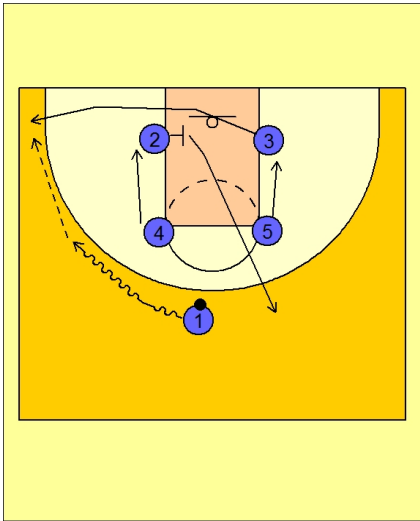


**Set play vs. man (20)****UCONN Set Play vs. Man Defense**

Box set to begin.

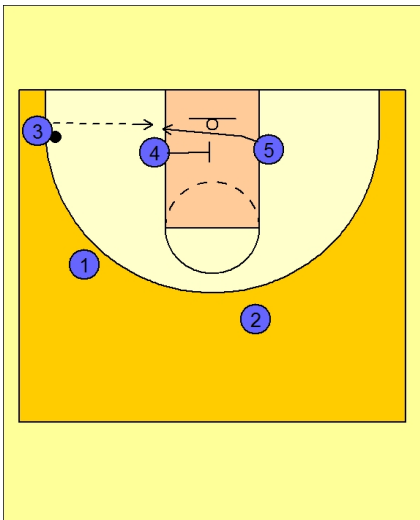
#1 drives the ball to the left side of the floor.

#2 screens for #3 breaking out to the ball side corner.

#4 slides down to the ball side low block.

#5 slides down to the block away from the ball.

#2 has screened for #3 and then breaks up to the right top area.

**UCONN Set Play vs. Man Defense**

#4 now screens across for #5 while #3 looks to get the ball on the low block to #5.