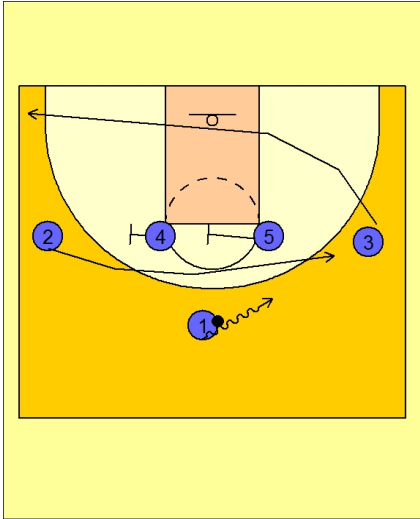
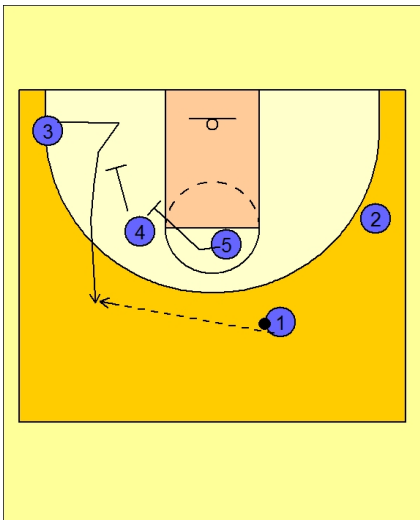


**Set play vs. man (25)****UCONN Set Play vs. Man Defense**

Play starts with #2 cutting over the top with a screen from #4 and #5. This action is mostly a decoy.

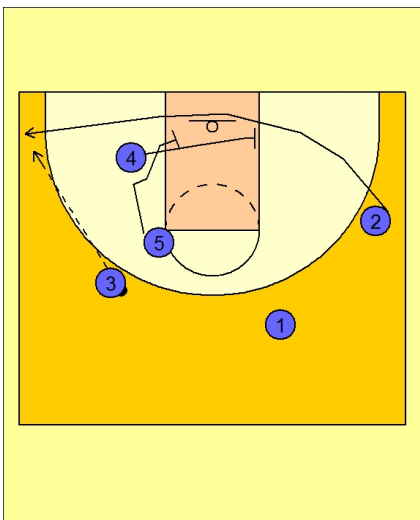
#3 cuts over to the left corner area.

#1 dribbles the ball to the right side, keeps his dribble alive.

**UCONN Set Play vs. Man Defense**

#4 and #5 now set a double staggered screen for #3.

#1 hits #3 coming off the screens for the open jump shot.

**UCONN Set Play vs. Man Defense**

If #3 does not have a shot, #4 and #5 now set a double staggered screen for #2 cutting over to the left corner area.



UCONN Set Play vs. Man Defense

If #2 cannot get the ball, #3 reverses the ball back to #1 on top while #5 and #4 set staggered screens again for #2 along the baseline.

