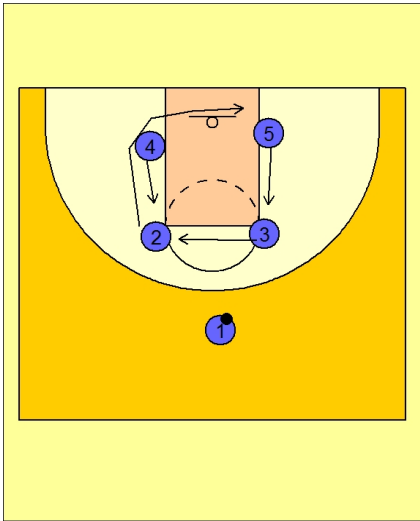




## Set play vs. man (26)



### UCONN Set Play vs. Man Defense

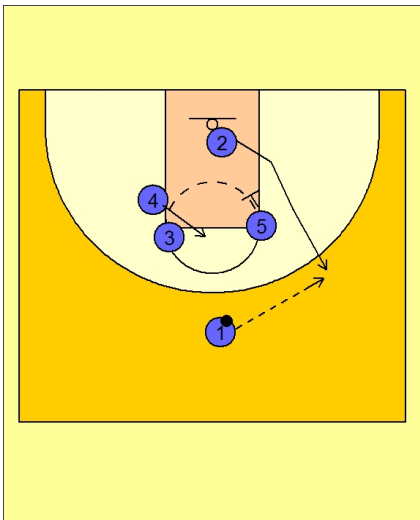
Box set to begin.

Players start a circle action.

#2 curls under the rim and over to the right low block.

#4 slides up to the FT line area while #3 moves over to the left FT line elbow.

#5 moves up to the right FT line elbow.

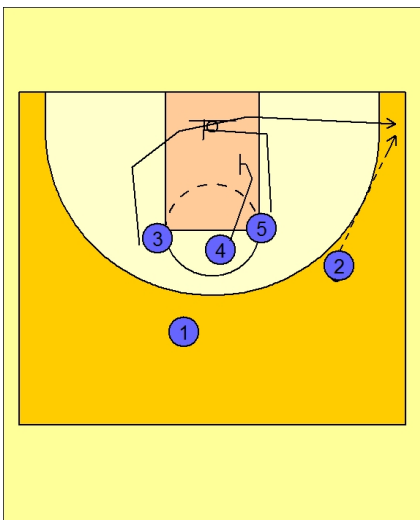


### UCONN Set Play vs. Man Defense

#5 turns around and sets a screen for #2.

#4 moves to the middle of the FT line.

#1 enters the ball to #2.



### UCONN Set Play vs. Man Defense

#5 cuts across the lane and #4 moves down to the right low block.

#3 now cuts off the staggered screen from #4 and #5.

#2 hits #3 in the corner for the open jump shot.



### UCONN Set Play vs. Man Defense

If #3 is not open, #2 reverses the ball on top to #1.

#4 and #5 now set another staggered screen for #3 along the baseline.

