

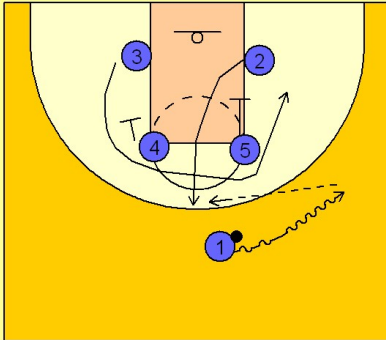
# Uconn

## Set play (10)

1

UCONN Set Play vs. Man Defense

Box set to begin.

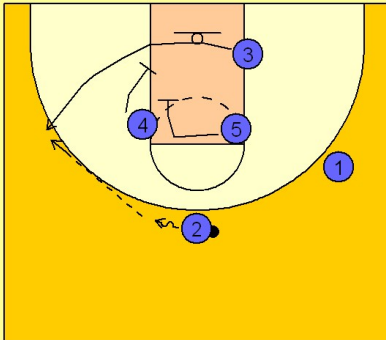


#1 takes the ball on the dribble to the right wing area. #3 cuts first off a screen from #4 and then curls around the top down to the right low block.

#2 then cuts next off a down screen from #5 and pops up to the top of the key area. #1 hits #2 on the top of the key.

2

UCONN Set Play vs. Man Defense



#4 and #5 then head hunt and set a double or double staggered screen on #3's defender. #3 looks to get open on the left wing. #2 takes a few dribbles to improve his passing angle and will hit #3 for the jumper if he is open.