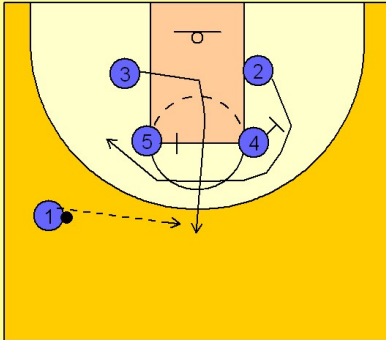


# Uconn

## Set play (11)

1

### UCONN Set Play vs. Man Defense

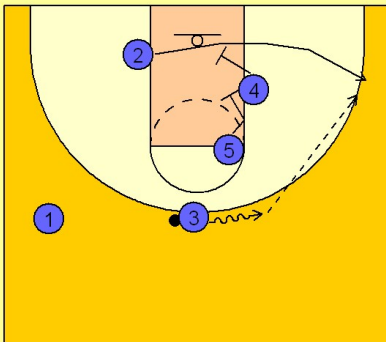


Similar beginning as in the last play. #4 and #5 set screens for #2 who curls around the top and down to the left low block area.

As #2 cuts over the top, #3 breaks up to the top of the key to receive the pass from #1.

2

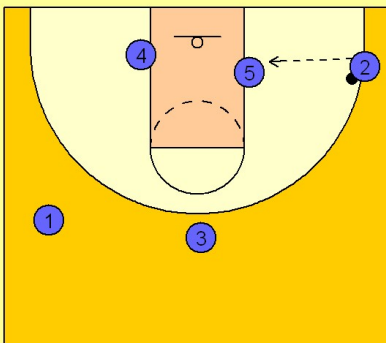
### UCONN Set Play vs. Man Defense



Once #3 has the ball, #4 and #5 set a double screen for #2 who breaks out to the right corner area for the open jump shot.

3

### UCONN Set Play vs. Man Defense



If #2 is not open for the shot, #4 continues across the lane after double screening while #5 stays and posts up on the right low block. #2 will look to enter the ball on the block if #5 is open.