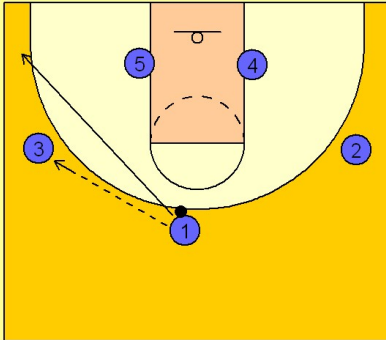


Uconn Set play (12)

1

UConn Set Play vs. Man Defense

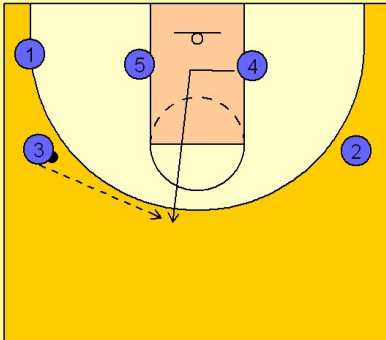
#1 enters to the left wing man #3 and cuts to the ball side corner area.



2

UConn Set Play vs. Man Defense

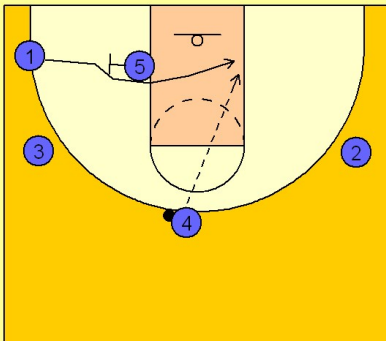
Once #3 has the ball, #4 cuts into the lane and then breaks straight up to the top of the key to receive the next pass from #3.



3

UConn Set Play vs. Man Defense

Once #4 has the ball on top, #5 sets a back screen for #1 who cuts over the top and into the lane looking for the pass from #4. This is NOT the main option on the play.



Uconn

Set play (12)

4

UCONN Set Play vs. Man Defense

What they are looking for is the defense to help on the screening action giving #5 an opportunity to get better post position on the block. #4 quickly reverses the ball back to #3 who looks to feed the ball down into the post player #5.

