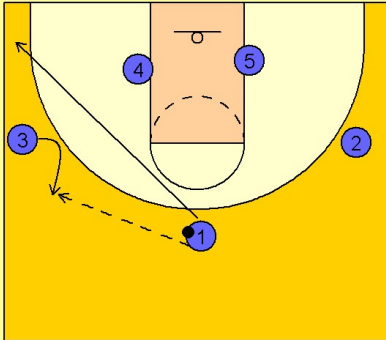


# Uconn Set play (13)

1

UConn Set Play vs. Man Defense

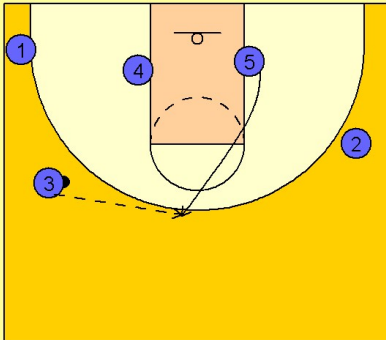
#1 passes to #3 on the left wing and cuts through to the ball side corner area.



2

UConn Set Play vs. Man Defense

#5 flashes to the top of the key area to receive the next pass from #3.



3

UConn Set Play vs. Man Defense

As soon as #5 receives the ball, #4 sets a back screen for #1. #1 cuts into the lane. As #1 gets into the lane he immediately turns around and sets a back screen for #4. #4 curls around the screen looking for the post entry pass from #5 inside.

