

Uconn

Set play (14)

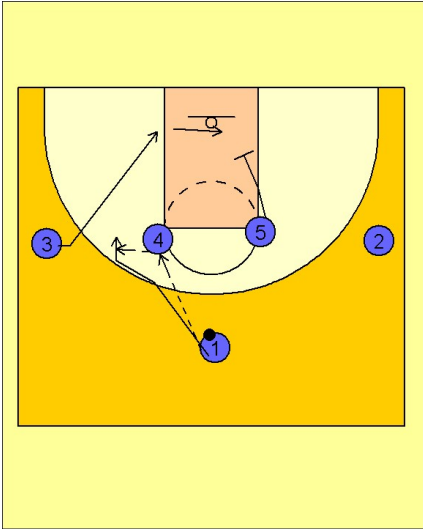
1

UCONN Set Play vs. Man Defense

1 - 4 high to begin.

#1 enters to either post player. Here #1 gives the ball to #4. #3 cuts backdoor. #4 will look to make the backdoor pass if #3 is open. #5 begins to move down into the lane to set a screen for #3.

#1 cuts over the top of #4 and gets the ball back on the left wing area.



2

UCONN Set Play vs. Man Defense

Once #1 has the ball, #4 steps out and sets a ballscreen for #1. As #1 comes off the ballscreen, #4 rolls to the basket while #2 fakes a downscreen and pops to the ball on top.

#3 comes off the downscreen from #5 while #2 looks to make the pass to #3 on the right wing for the open jumper.

