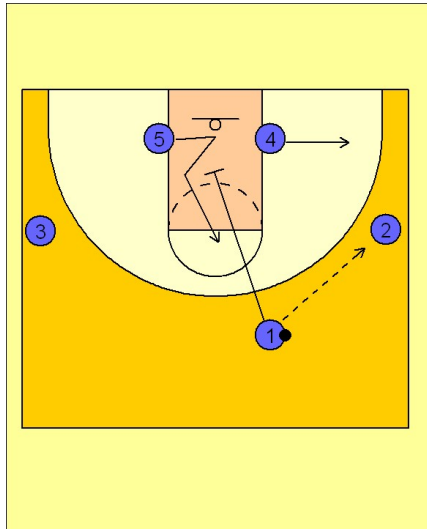


Uconn

Set play (2)

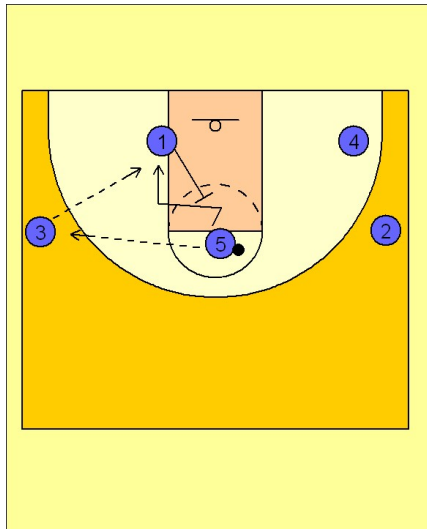
1



UCONN Set Play

(#1) enters the ball to (#2).
(#1) sets a down screen for (#5), who flashes to the high post area.

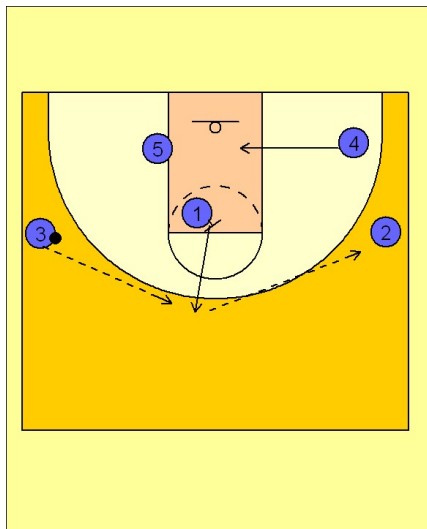
2



UCONN Set Play

(#5) reverses the ball to (#3).
(#5) gets a back screen from (#1) looking for the post up opportunity on the block.

3



UCONN Set Play

After (#1) sets the back screen, he pops out to the top of the key for ball reversal.

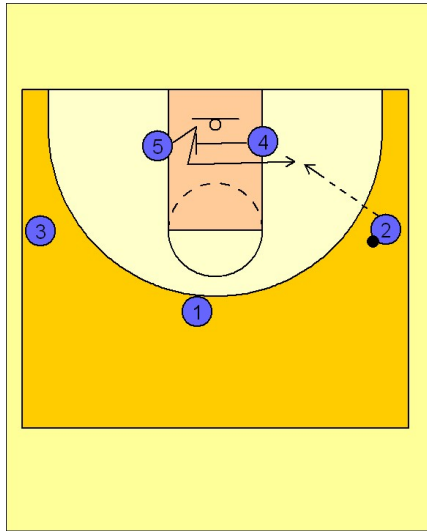
(#3) passes to (#1) who reverses the ball to (#2).

(#4) slides into the lane area.

Uconn

Set play (2)

4



UCONN Set Play

(#4) can head hunt in the lane and look to screen (#5's) defender, starting their motion offense.

UCONN is now in their motion alignment and can start screening, cutting and passing from here.