

Uconn

Set play (4)

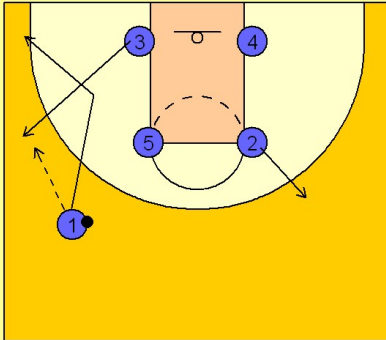
1

UCONN Set Play

Box set to start.

(#3) breaks to the ball side wing. (#1) enters the ball to (#3) and cuts to the ball side corner.

(#2) steps out opposite the ball, free throw line extended.

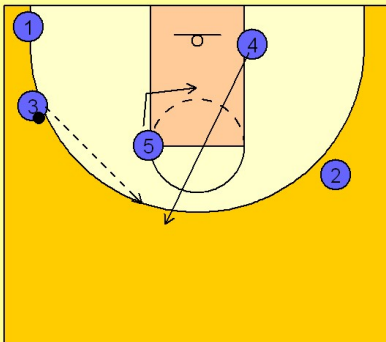


2

UCONN Set Play

The opposite post player (#4), flashes to the high post area looking for a pass from (#3).

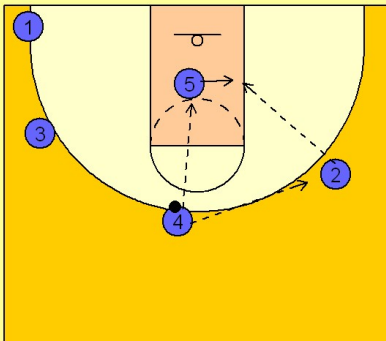
Once the ball is entered to (#4), (#5) slides in the lane looking for a dump down pass from (#4).



3

UCONN Set Play

If the pass directly from (#4) is not there, (#4) will reverse the ball to (#2) who will look to dump it in to (#5).



Uconn

Set play (4)

4

UCONN Set Play

Once (#4) has reversed the ball to (#2), (#4 and #3) look to set a double screen for (#1) in the opposite corner / wing area.

(#1) will use the screen, looking for a jump shot at the top of the key area.

