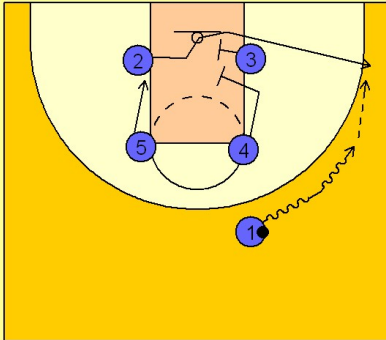


# Uconn

## Set play (6)

1

### UCONN Set Play

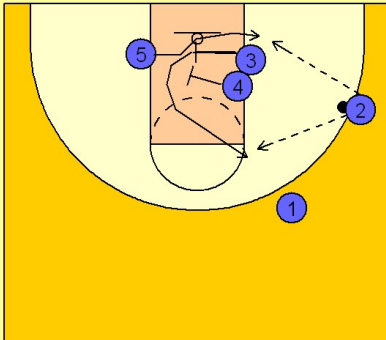


Box set to begin. #1 takes the ball to the right side of the floor. #4 slides down and sets a double screen with #3. #2 breaks to the ball side wing / corner area off of the double screen looking for a shot.

#5 slides down to the opposite low block as this is developing.

2

### UCONN Set Play



Once #2 has the ball, #3 and #4 set a cross screen for #5, bringing him to the ball side block looking for the post up pass.

#3 breaks to the top of the key area looking for a shot, just in case his man helps with the double screen action on #5. #2 can hit #5 on the block or #3 breaking to the top of the key for a shot. #3 can also look to make the high low entry pass to #5.