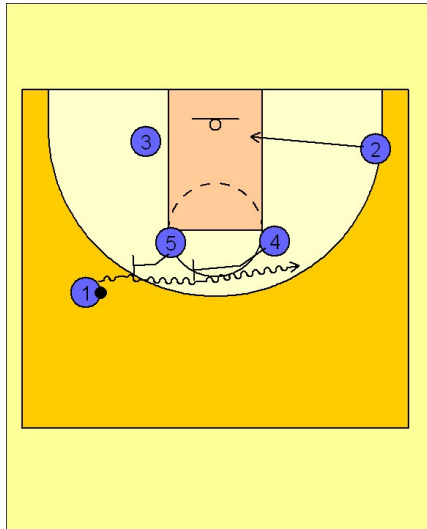


Uconn

Set play (7)

1

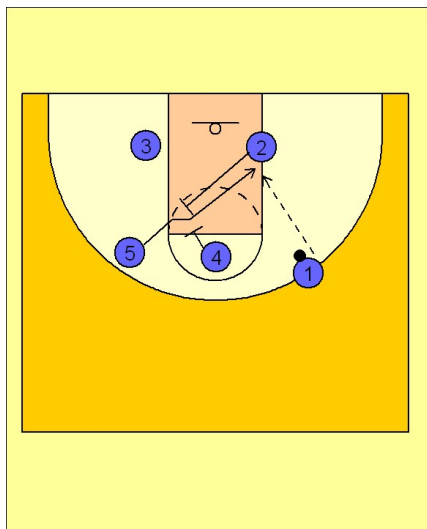


UCONN Set Play

#5 and #4 set a staggered screen for #1 who is driving the ball across the top of the key area.

#2 moves down to the ball side block.

2

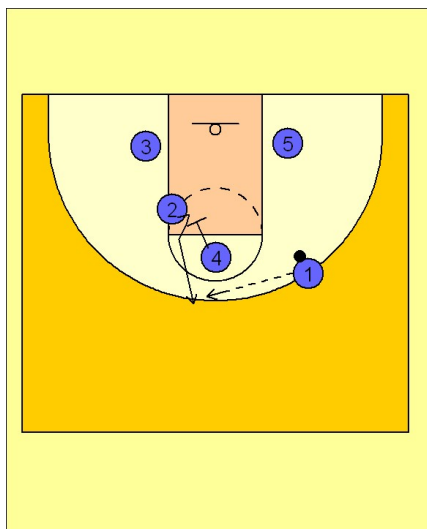


UCONN Set Play

Once #1 gets to the right side, #2 moves up and sets a diagonal back screen for #5, bringing him to the ball side block for the post entry pass from #1.

#4 gets in position to set a down screen for #2.

3



UCONN Set Play

If #5 is not open, #4 down screens for #2 completing the pick the picker action. #1 looks to hit #2 on top for the shot.