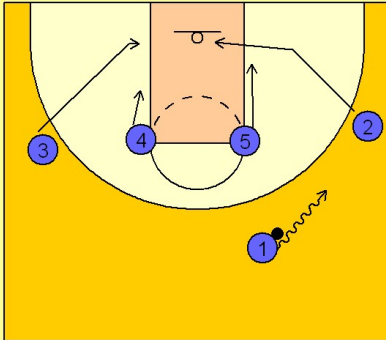


Uconn

Set play (8)

1

UCONN Set Play vs. Man Defense

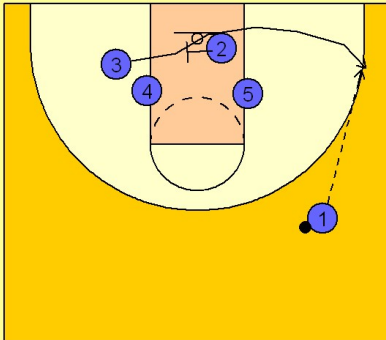


#1 drives the ball over to the right side of the floor. #2 moves down to the right block area while #3 moves down to the same area on the opposite side.

#5 starts to move down as does #4.

2

UCONN Set Play vs. Man Defense

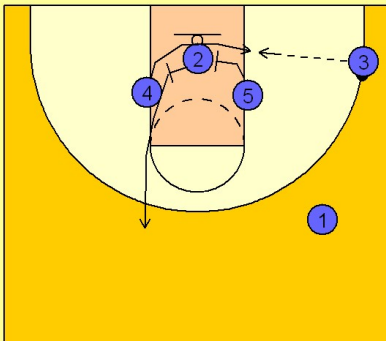


#2 first screens for #3 bringing him out to the ball side wing / corner area.

#1 looks to enter the ball to #3.

3

UCONN Set Play vs. Man Defense



#2 continues across and screens for #4 bringing him to the ball side block for the post up. #4 will also get a screen in the middle of the lane from #5, making this a difficult play to defend with two back to back screens in the lane for the post man #4.