

Uconn

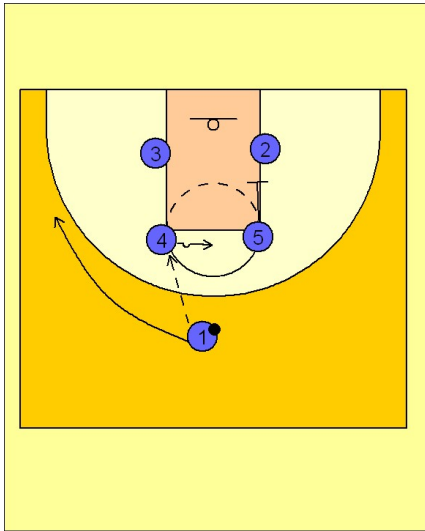
Set play (9)

1

UConn Set Play vs. Man Defense

Box set to begin.

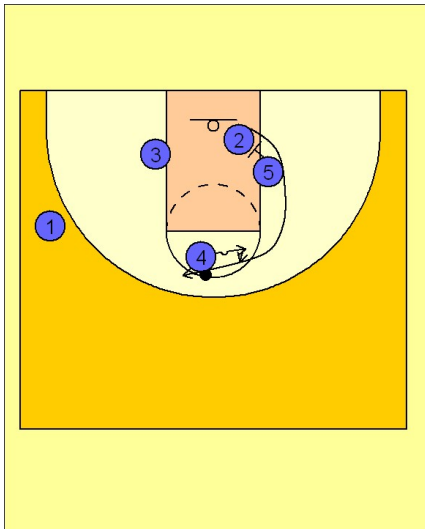
#1 enters to #4 on the left FT line elbow. #1 cuts over to the ball side wing area after passing to #4. #5 starts to move down to set a screen for #2.



2

UConn Set Play vs. Man Defense

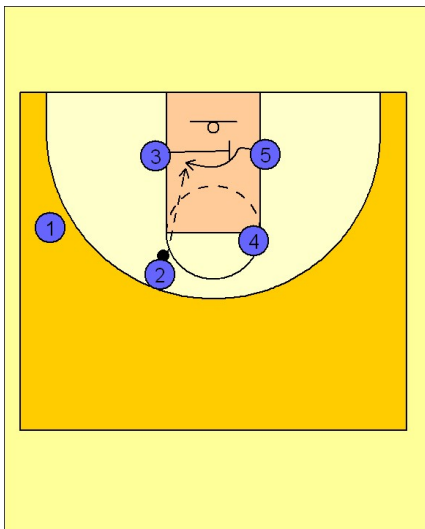
#4 takes the ball over to the right on the dribble while #5 screens for #2. #2 comes off the screen and curls around for a dribble hand off from #4.



3

UConn Set Play vs. Man Defense

As #2 comes off the screen and hand off from #4, #3 screens across for #5. #2 looks inside to #5.



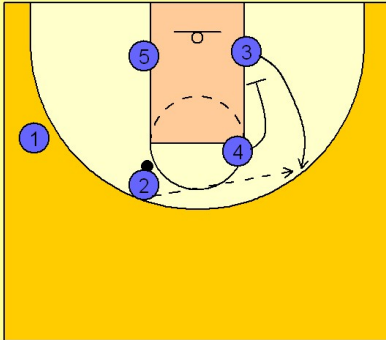
Uconn

Set play (9)

4

UCONN Set Play vs. Man Defense

If #5 is not open, #4 down screens for #3. #2 makes the pass to #3 on the right wing.



5

UCONN Set Play vs. Man Defense

Once #3 has it, #4 steps out and executes a pick and roll with #3. #4 can roll to the basket or step out if he has the range. #3 will create in the lane to score or dump off to #4 or #5 if his man comes to help.

