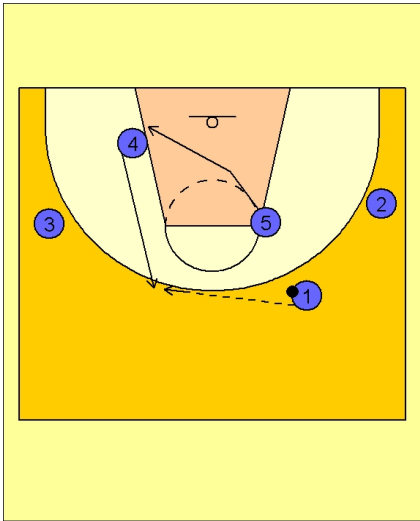




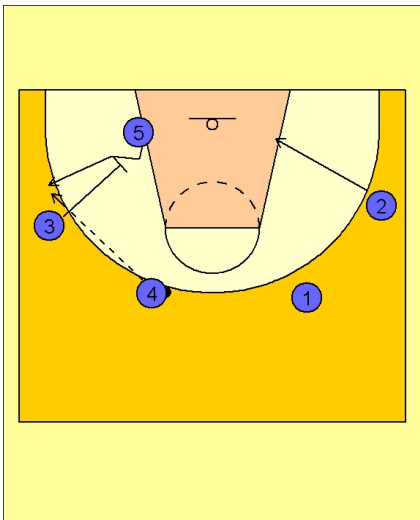
## Set play vs man1



### Greece Set Play vs. Man Defense

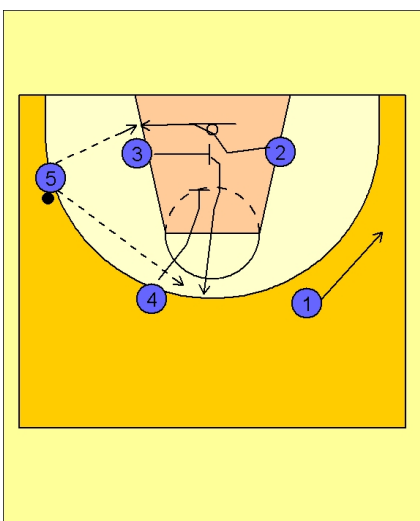
#4 quickly moves out past the three point line to receive the entry pass from #1.

#5 slides over to take the spot of #4.



### Greece Set Play vs. Man Defense

#3 sets a down screen for #5. #4 passes to #5 coming off the down screen.



### Greece Set Play vs. Man Defense

Once #5 has the ball on the left wing, #3 screens across for #2 while #4 sets a down screen for the screener, #3.

#5 looks inside to #2 or for #3 coming out on top off the down screen from #4.

#1 flattens out on the right wing area.