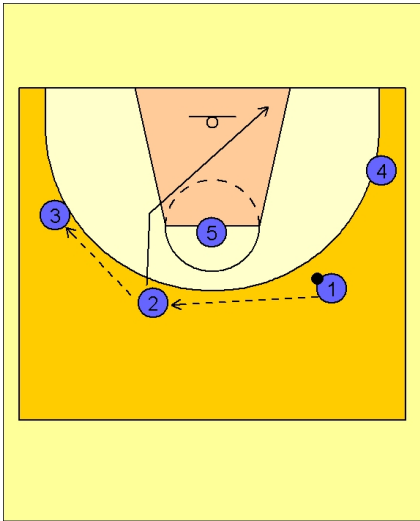




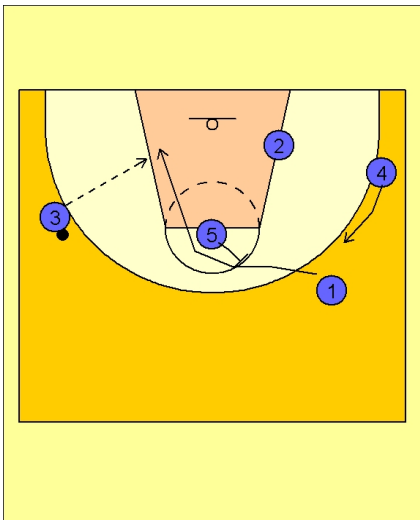
Set play vs man2



Greece Set Play vs. Man Defense

#1 reverses the ball to #2 on top who then passes to #3 on the left wing.

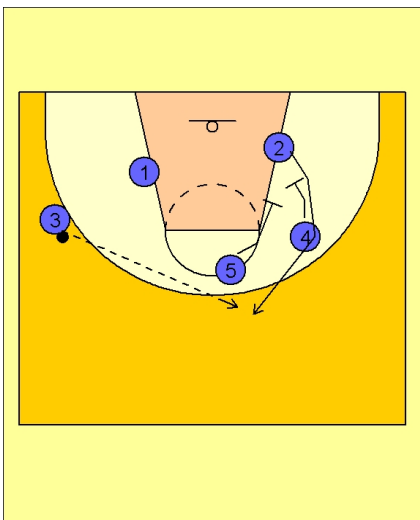
#2 cuts through the lane and down to the opposite low block.



Greece Set Play vs. Man Defense

As soon as #2 cuts through, #1 follows with a cut to the ball side low block off of a back screen from #5.

#4 slides up to fill the spot left by #4.



Greece Set Play vs. Man Defense

If #1 does not get the ball, #5 and #4 set a double screen for #2, looking to get open for the open jumper on top.