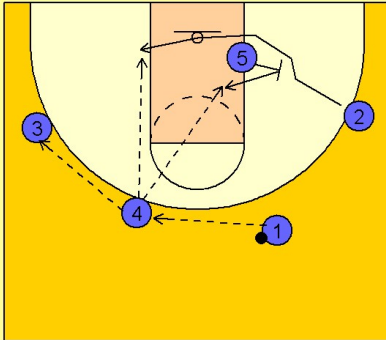


# Georgia tech

## Early offense (1)

1

Georgia Tech Early Offense vs. Man Defense

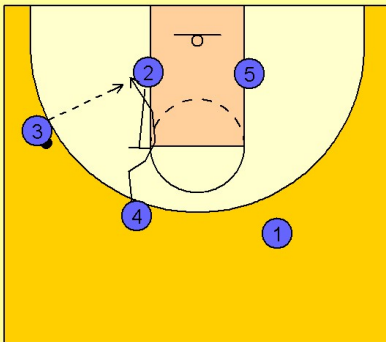


#1 reverses the ball to #4 on top who passes to #3 on the left wing area.

As the ball is reversed, #5 steps out a bit and sets a back screen for #2. #3 cuts across the low block area to the left low block. After screening, #5 steps in the paint momentarily for the post up. This will be effective if his defender had to help on #2 cutting to the left low block.

2

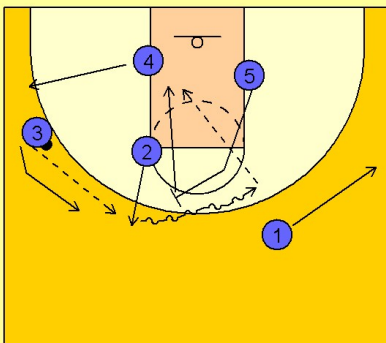
Georgia Tech Early Offense vs. Man Defense



#2 then cuts up and sets a back screen for #4. #4 cuts to the low left block looking for the entry pass from #3.

3

Georgia Tech Early Offense vs. Man Defense



#2 then steps out to receive the pass from #3.

Once #2 has the ball on top, #5 steps out and sets a ball screen for #2. #2 and #5 execute a pick and roll on top. #5 rolls to the basket.

As this is happening, #3 follows his pass on top while #4 steps out to replace the spot just vacated by #3. This action clears the lane area for the pick and roll action from #2 and #5.