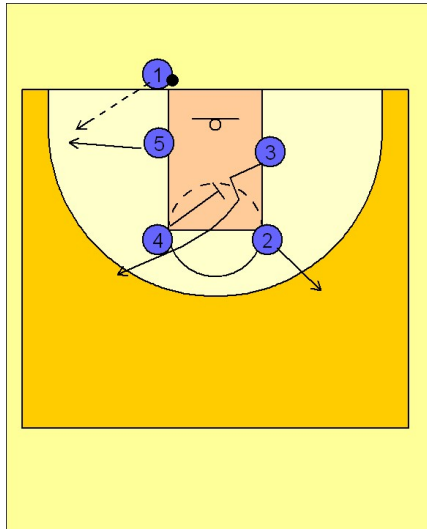


Georgia tech

Ob under vs. man (1)

1

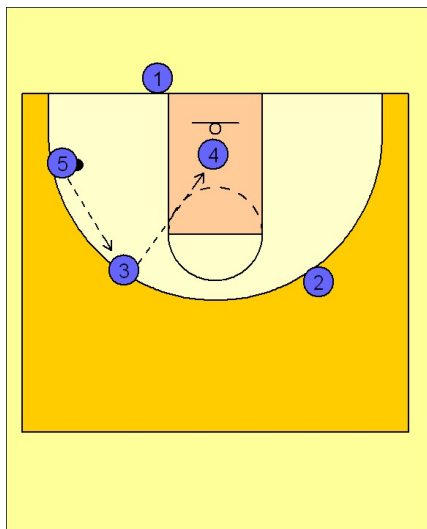


Georgia Tech OB Under vs. Man Defense

Box set to begin.

#5 steps out to the ball side corner for the entry pass from #1. #4 sets a diagonal down screen for #3 who breaks up to the left wing area. #2 breaks out to the right wing area.

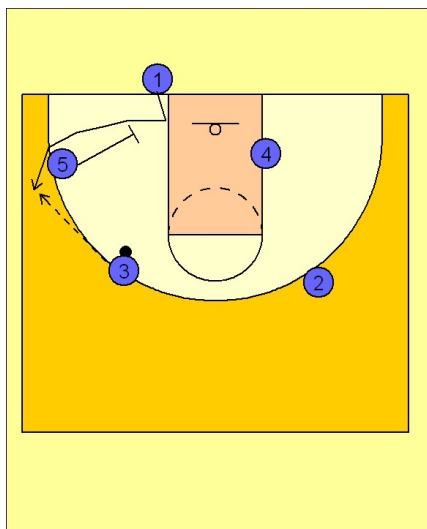
2



Georgia Tech OB Under vs. Man Defense

#5 quickly passes to #3 on top who looks to hit #4 sealing in the lane for the post entry pass.

3



Georgia Tech OB Under vs. Man Defense

If #4 is not open he will slide across to the right low block area. #5 will then down screen for #1 stepping inbounds and looking for the open jumper in the left corner area.