

# Georgia tech

## Quick hitter (2)

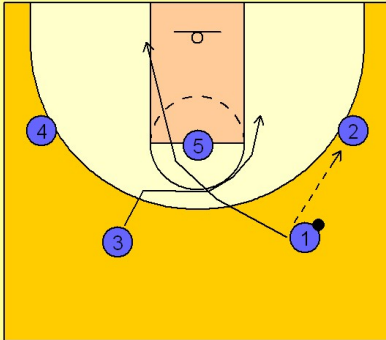
1

Georgia Tech Quick Hitter vs. Man Defense

2 - 3 high alignment to begin.

#1 enters to #2 on the right wing. #1 and #3 cross on top and cut down to their opposite respective blocks.

#3 will stop short of the block.



2

Georgia Tech Quick Hitter vs. Man Defense

#3 then cuts back and sets a quick back screen for #5 who rolls around the screen and looks for the quick hitting post entry on the right low block.

#3 pops out after screening for floor balance and to continue their motion offense if #5 is not open.

