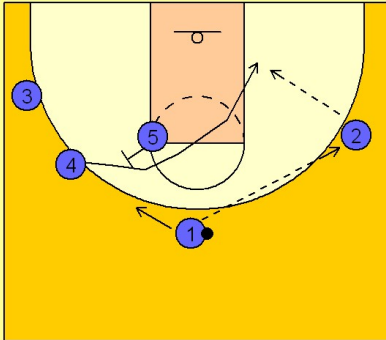


Georgia tech

Quick hitter (4)

1

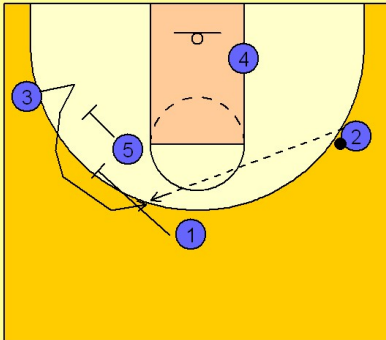
Georgia Tech Quick Hitter vs. Man Defense



#1 enters to the right wing man #2. #5 sets a diagonal back screen for #4 who cuts to the low block looking for the entry pass from #2.

2

Georgia Tech Quick Hitter vs. Man Defense



If #4 is not open, #5 and #1 set a double screen for #3. #2 will look to hit #3 on top if he is open for the jumper.