

Georgia tech

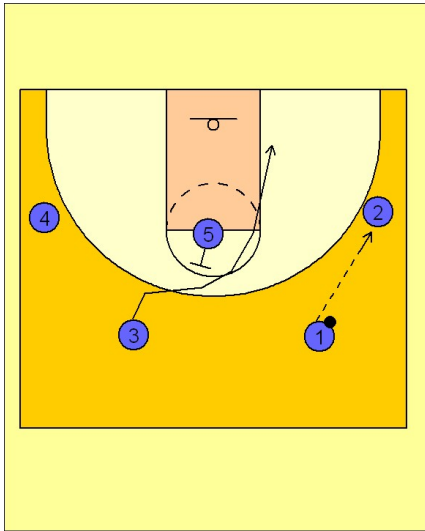
Set play vs. man (1)

1

Georgia Tech Set Play vs. Man Defense

2 - 3 high alignment to begin.

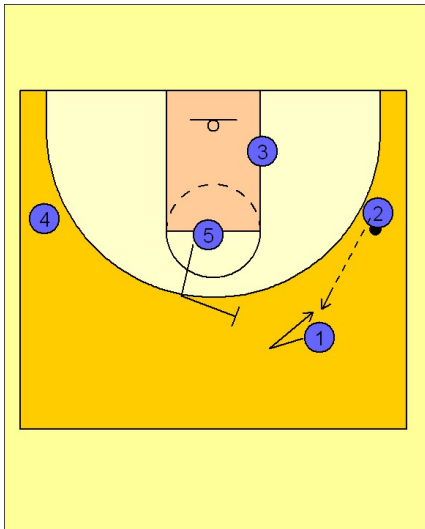
#1 enters to #2 on the right wing. #5 sets a back screen for #3 as he cuts down the lane to the right block. Certainly #2 can look for #3 but is not really an option on this play.



2

Georgia Tech Set Play vs. Man Defense

Once #3 cuts down to the right block, #1 cuts away and then comes back to the ball. #2 passes to #1 while #5 steps out to set a ball screen for #1.

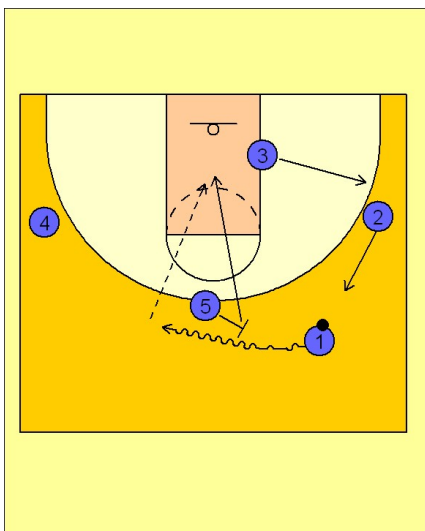


3

Georgia Tech Set Play vs. Man Defense

#1 comes off the ball screen high while #2 moves up to take the position just vacated by #1 while #3 steps out to the right wing where #2 just occupied.

#5 rolls off the ball screen to the basket and is #1's first option.



Georgia tech

Set play vs. man (1)

4

Georgia Tech Set Play vs. Man Defense

If #5 is not open on the roll, #1 will look to pass back to #2 who will pass down to #3. Both #2 and #3 will look to pass inside to #5 on the right block.

