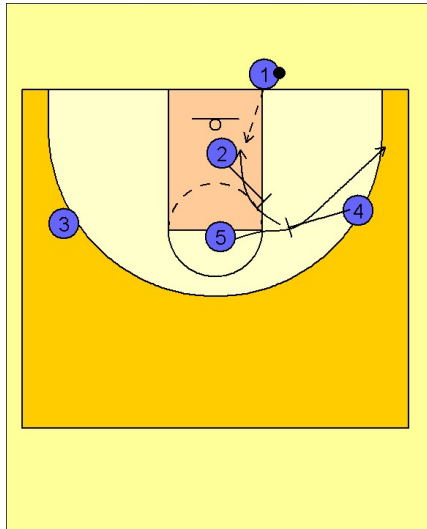


Illinois

Ob under vs. man (7)

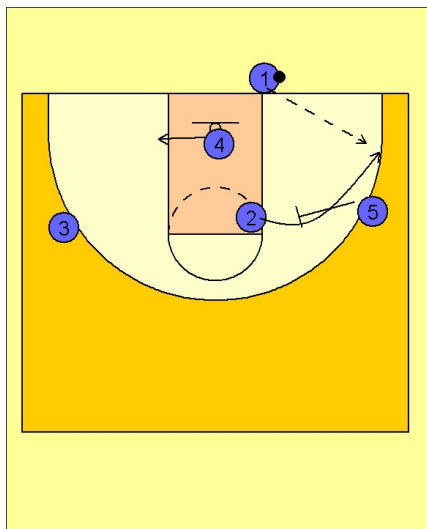
1



Illinois OB Under vs. Man Defense

The play starts with #4 screening for #5. #5 breaks to the right corner area. The play is not designed to get him the ball. #2 back screens for the screener, #4, and #4 then cuts to the basket for the first option in the play.

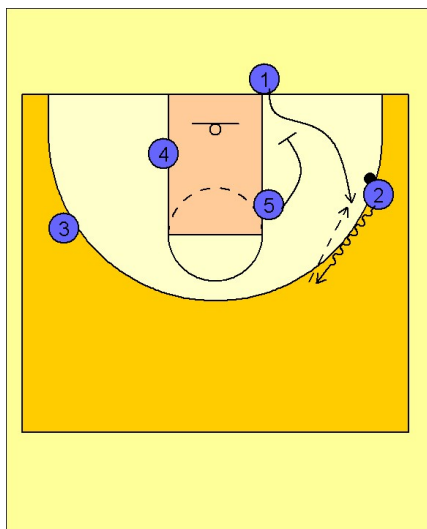
2



Illinois OB Under vs. Man Defense

If #4 does not receive the pass, #5 comes back in and sets a screen for the screener, #2, who breaks out to the right corner to receive the entry pass.

3



Illinois OB Under vs. Man Defense

Once #2 has the ball he dribbles up to the wing while #1 steps in off of a down screen from #5. #2 passes the ball to #1 on the right wing / corner area.

Illinois

Ob under vs. man (7)

4

Illinois OB Under vs. Man Defense

Once #1 has the ball he begins to dribble up the sideline and now he will look for #3 breaking to the ball side corner off of a double staggered screen from #4 or #5.

