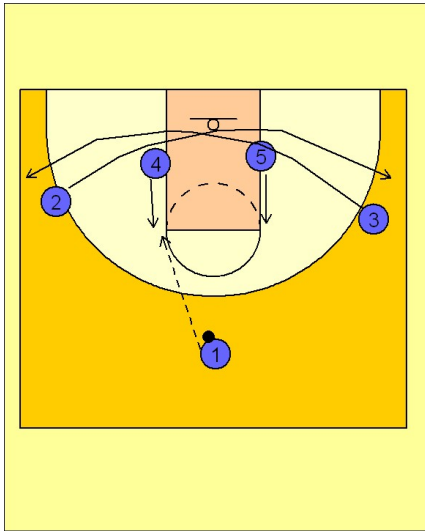


Illinois Set play (10)

1



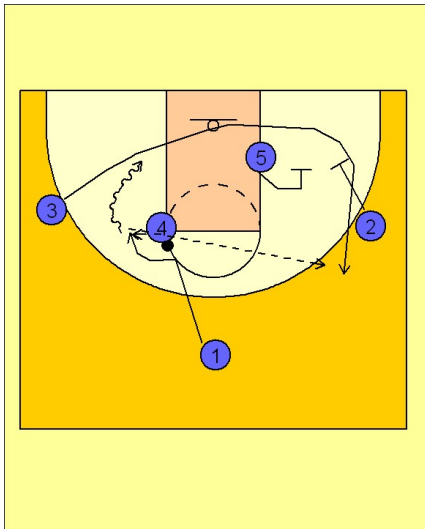
Illinois Set Play vs. Man Defense

#3 and #2 cross out underneath the basket and break out to their respective wing areas.

#4 and #5 flash into the high post elbow areas.

#1 enters to either high post player. In this diagram we see him enter to #4 on the left elbow.

2



Illinois Set Play vs. Man Defense

Once #1 passes to #4, #3 clears out underneath the basket and out to the other wing off of a double down screen from #5 and #2.

#1 follows his pass around #4 to receive a hand off. #1 can immediately look to attack the cleared out basket area or he can look for #3 coming off the double screen on the other side.