

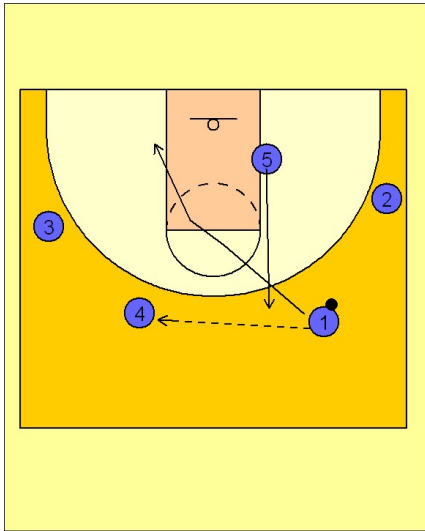
Illinois

Set play (11)

1

Illinois Set Play vs. Man Defense

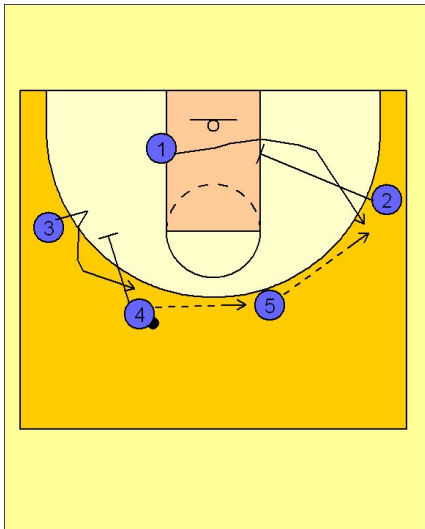
#1 passes the ball across the top to #4. #1 cuts through the lane and down to the opposite low block while #5 breaks out to replace the spot on the floor #1 just vacated.



2

Illinois Set Play vs. Man Defense

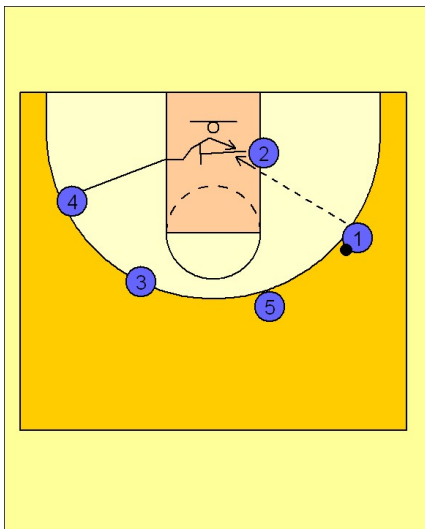
#4 hits #5 with a pass. #4 then screens away for #3 while #2 moves down to set a screen for #1 breaking out to the right wing to receive the next pass from #5.



3

Illinois Set Play vs. Man Defense

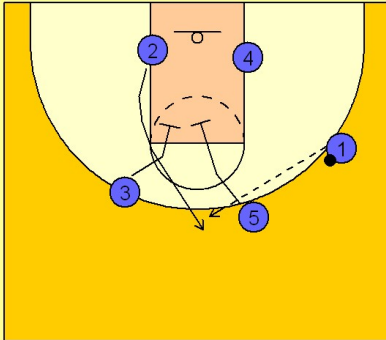
#1 looks inside as #2 screens across for #4.



Illinois Set play (11)

4

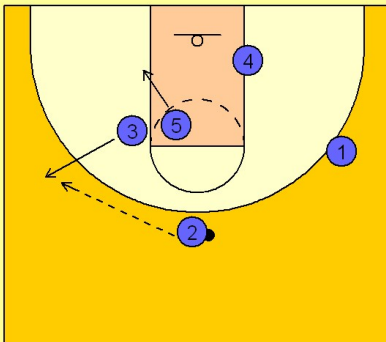
Illinois Set Play vs. Man Defense



If #4 is not open, #3 and #5 double down screen for #2 on the left block. #1 looks to hit #2 on the top of the key if he is open.

5

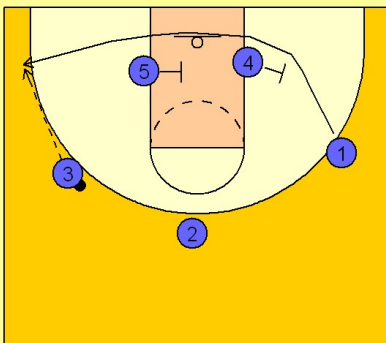
Illinois Set Play vs. Man Defense



Once #2 has the ball on top, #3 breaks out to the left wing while #5 moves down to the left low block area. #2 passes the ball to #3 on the left wing.

6

Illinois Set Play vs. Man Defense



Once #3 has the ball on the left wing, #5 and #4 are setting double staggered screens along the baseline for #1. #3 will look to hit #1 in the left corner if he is open for the shot.