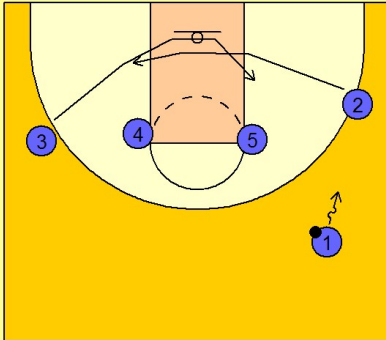


Illinois Set play (12)

1

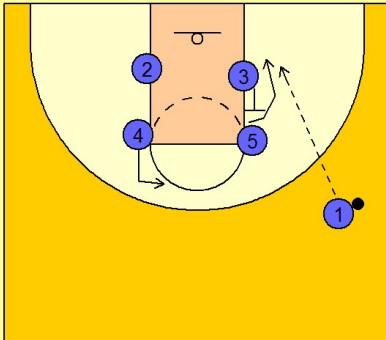
Illinois Set Play vs. Man Defense



#1 dribbles at #2 clearing him out to the opposite low block. #3 is cutting across to the ballside low block at the same time.

2

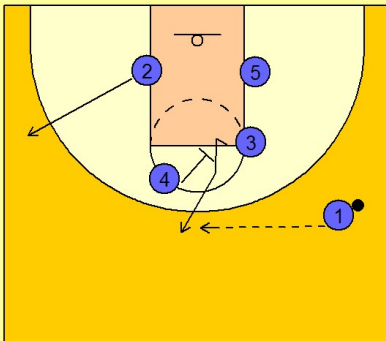
Illinois Set Play vs. Man Defense



#3 then steps up and sets a back screen for #5 bringing him to the ballside low block. #1 looks to enter to the low post man #5 if he is open. #4 moves up to the top of the key area.

3

Illinois Set Play vs. Man Defense



If #5 is not open, #4 sets a down screen for #3 who breaks up to the top to receive the pass from #1. #2 breaks out to the left wing area.

Illinois

Set play (12)

4

Illinois Set Play vs. Man Defense

Once #3 has the ball, #2 clears out off of a double screen on the opposite low block area from #5 and #1. #4 moves up to run the screen and roll with #3. #4 can roll to the basket or "pick and pop" if he has three point range.

