

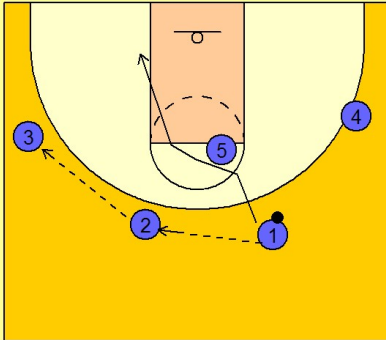
Illinois Set play (13)

1

Illinois Set Play vs. Man Defense

2 - 3 high set to begin.

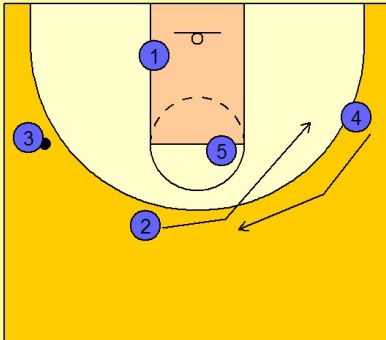
#1 passes across to #2 who passes to #3 on the left wing. #1, after passing to #2, cuts over the top of #5 to the ball side low block area.



2

Illinois Set Play vs. Man Defense

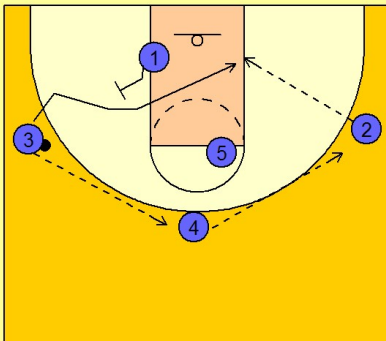
Once #3 has the ball, #2 and #4 interchange or #2 can screen away for #4.



3

Illinois Set Play vs. Man Defense

#3 reverses the ball to #4 on top who passes to #2 on the right wing. #3, after passing to #4 on top, gets a back screen from #1 on the left block and cuts across the lane looking for an entry pass from #2.



Illinois

Set play (13)

4

Illinois Set Play vs. Man Defense

Once #2 receives the ball on the right wing, #4 and #5 double screen away for #1 for a potential open jump shot on top.

