

Illinois

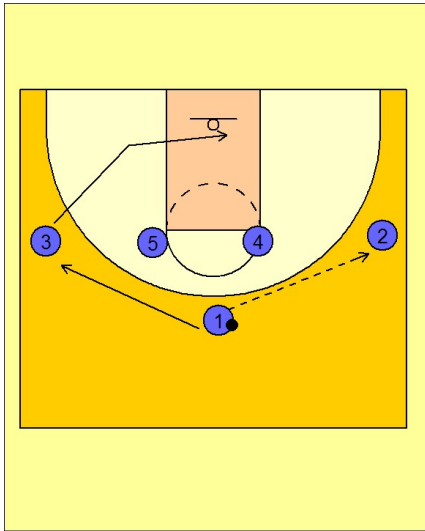
Set play (14)

1

Illinois Set Play vs. Man Defense

1 - 4 high set to begin.

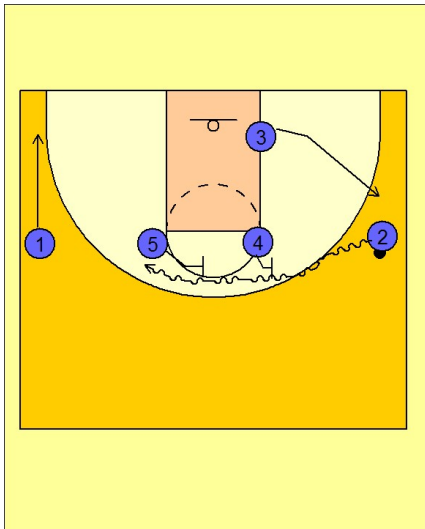
#1 enters to #2 on the right wing and cuts to the opposite wing area. #3 cuts down under the basket and towards the ball side low block.



2

Illinois Set Play vs. Man Defense

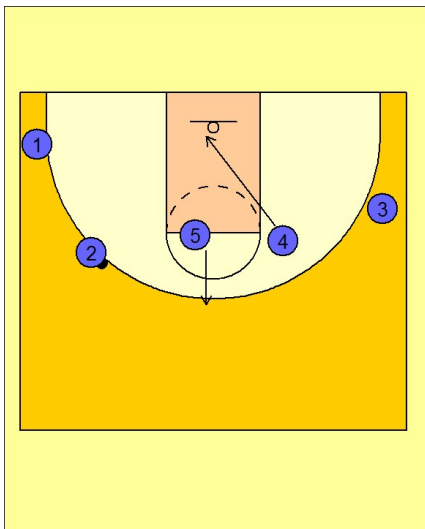
Once #2 has the ball, #4 and #5 set a staggered double ball screen for #2 driving over the top. As this is happening, #1 is flattening out to the left corner area and #3 is breaking out to the spot #2 just occupied on the right wing.



3

Illinois Set Play vs. Man Defense

After #2 comes over the top of the screen, #4 rolls to the basket while #5 pops out to the top of the key area.



Illinois

Set play (14)

4

Illinois Set Play vs. Man Defense

#2 can look to make the direct post pass to #4 inside or can hit #5 on top for the high / low entry pass.

