

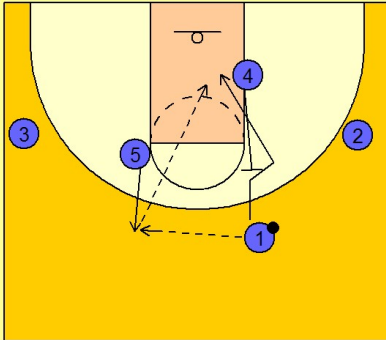
Illinois Set play (15)

1

Illinois Set Play vs. Man Defense

Here is a set play that Illinois likes to use with a variety of finishes. Let's look at the first option on this play.

#5 steps out and receives an entry pass from #1. #4 back screens for #1 who cuts to the basket. We suppose #1 may be the first option cutting to the basket, but rarely is this what they are looking for.

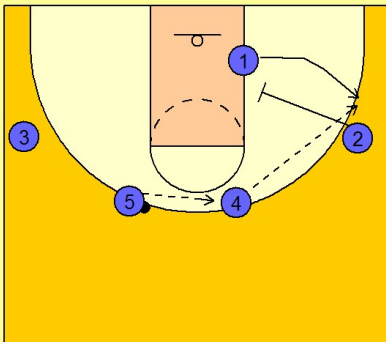


2

Illinois Set Play vs. Man Defense

After back screening, #4 steps out to receive the pass from #5. Here is where Illinois has three options they like use.

First, #2 sets a down screen for #1 bringing him to the right wing to receive the pass from #4.



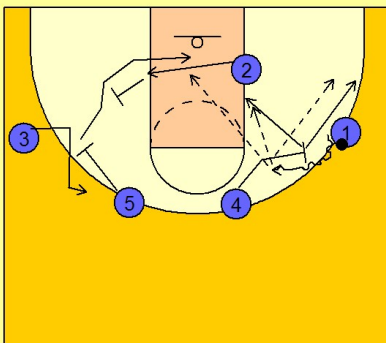
3

Illinois Set Play vs. Man Defense

Once #1 has the ball on the right wing, #4 moves over to execute a screen and roll with #1.

As this is happening, #2 cuts across the lane away from the ball. #5 screens away bringing #3 to the top. After #5 screens, he then receives a back screen from #2.

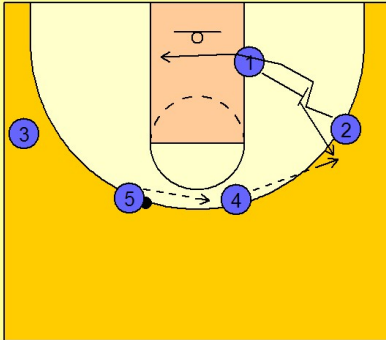
#1 has the option of passing to #4 rolling to the basket or popping out to the wing or he can hit #5 off the back screen from #2 down low.



Illinois Set play (15)

4

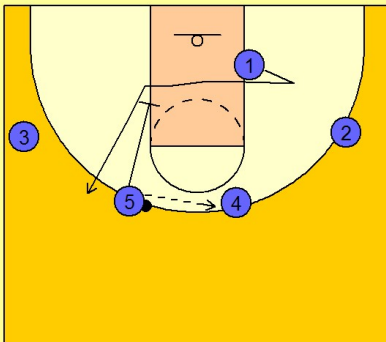
Illinois Set Play vs. Man Defense



Here is there second option from this play. Instead of #2 down screening for #1, #1 will back screen for #2 on the right wing and #2 will cut across the lane to the left low block area. #1 pops out after screening and receives the pass from #4. The play continues as in the previous diagram from this point.

5

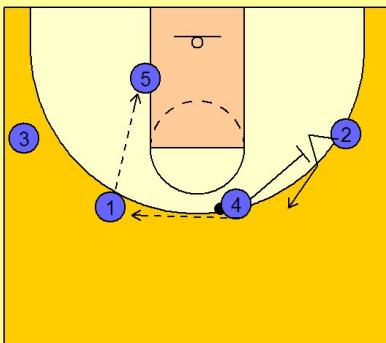
Illinois Set Play vs. Man Defense



The last option on this play is #1 faking he is going to get or give a screen and breaks across the lane. #5 passes the ball over to #4. #5 then down screens for #1 trying to free him up for a shot on top.

6

Illinois Set Play vs. Man Defense



Once #1 has the ball, #5 looks top post up on the block while #4 screens away for #1 to occupy the perimeter defenders.