

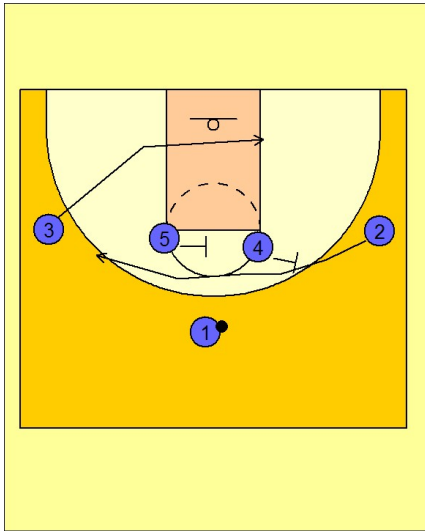
Illinois Set play (16)

1

Illinois Set Play vs. Man Defense

1 - 4 high set to begin.

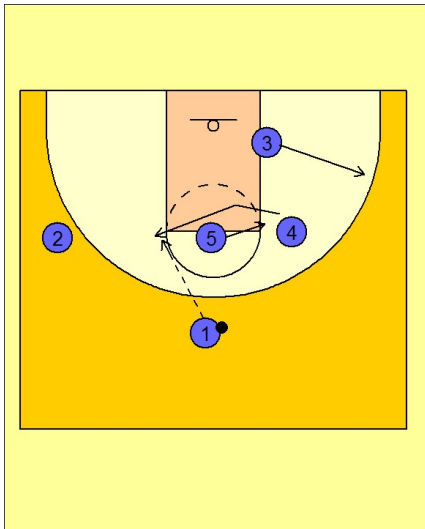
#3 cuts down and across the lane while #5 and #4 screen for #2. #2 cuts across the top as a bit of a decoy.



2

Illinois Set Play vs. Man Defense

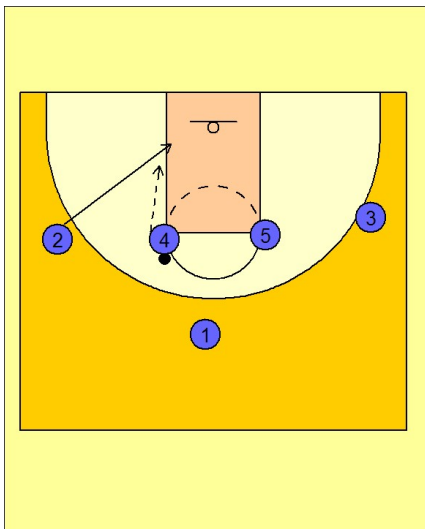
In previous Illinois plays, #2 would usually receive the pass. However, this time #4 rolls back to the ft line elbow area to receive the entry pass from #1. #3 continues his cut across the lane and pops out to the right wing.



3

Illinois Set Play vs. Man Defense

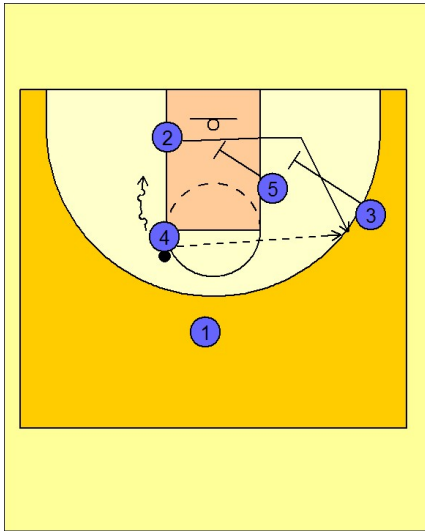
On the entry pass to #4, #2 cuts back door looking for the pass from #4.



Illinois Set play (16)

4

Illinois Set Play vs. Man Defense



If #2 does not receive the pass from #4 he continues cutting through the lane and out the other side off of a double staggered screen from #5 and #3.

#4 can look to hit #2 coming off the double staggered screen or he can put the ball on the floor to the basket as the side has been cleared out.