

# Illinois

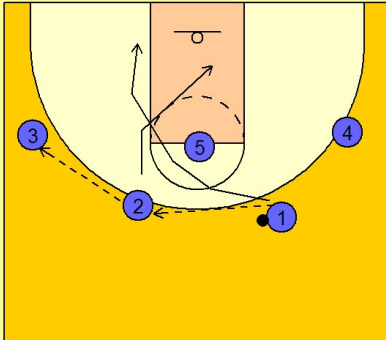
## Set play (17)

1

Illinois Set Play vs. Man Defense

2 - 3 high set to begin.

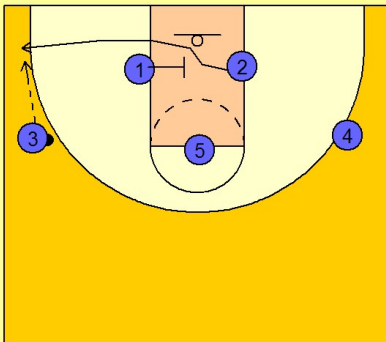
#1 passes over to #2 on top who passes to #3 on the left wing. #1 cuts first over the top of #5 to the ball side low block while #2 cuts behind him down the lane to the opposite low block area.



2

Illinois Set Play vs. Man Defense

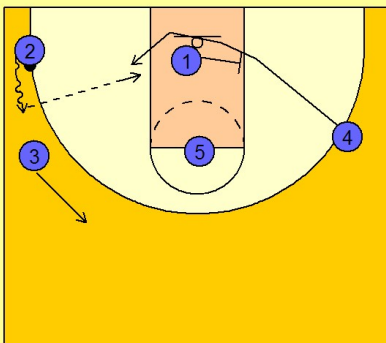
Once #1 and #2 reach their destination, #1 screens across for #3 bringing him to the ball side corner area to receive the pass from #3.



3

Illinois Set Play vs. Man Defense

Once #2 has it, he begins to dribble up while #3 moves toward the top of the key area. As this is happening, #1 continues his movement across the lane and screens for #4, bringing him to the ball side low block area.



# Illinois

## Set play (17)

4

Illinois Set Play vs. Man Defense

If #4 is not open, #3 and #5 set a double staggered down screen for #1 trying to free him for an open jumper on top.

