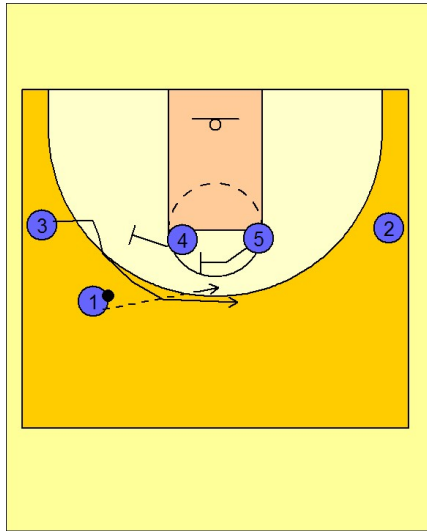


Illinois Set play (19)

1

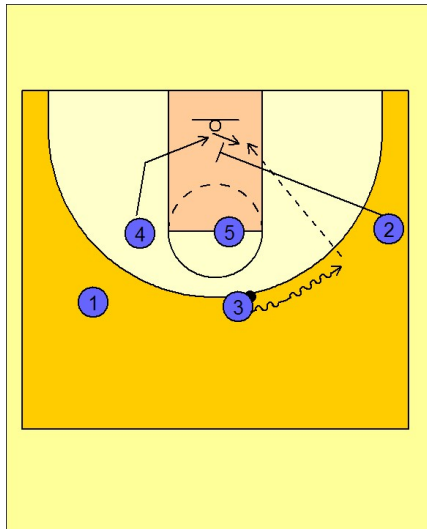


Illinois Set Play vs. Man Defense

1 - 4 high set to begin.

#4 and #5 set a double staggered screen for #3 cutting over the top to receive the entry pass from #1.

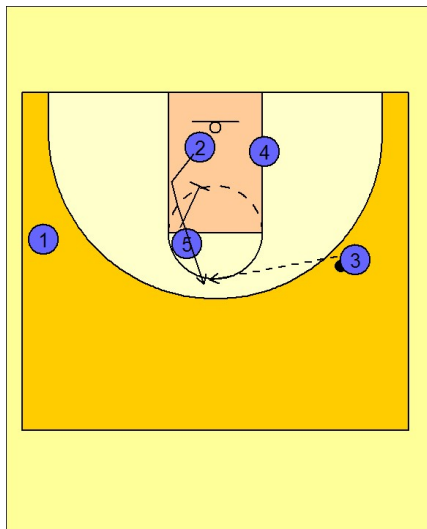
2



Illinois Set Play vs. Man Defense

Once #3 has the ball, he continues his movement towards the right wing on the dribble. As this is happening, #2 is cutting down into the lane to set a cross screen for #4. #3 will look to enter the ball to #4 on the right block if he is open.

3



Illinois Set Play vs. Man Defense

If #4 is not open, #5 sets a down screen for #2, completing the "pick the picker" action. #2 breaks up to the top looking for the open jump shot and pass from #3.