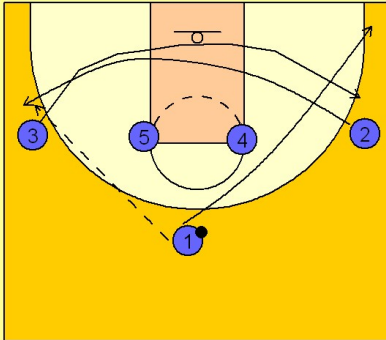


Illinois

Set play (2)

1

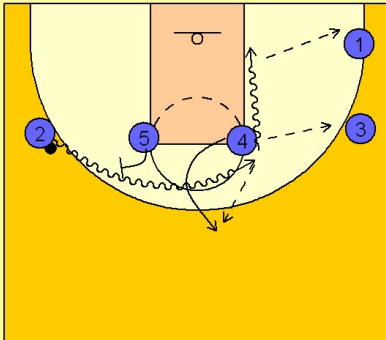
Illinois Set Play vs. Man Defense



#2 and #3 cross out underneath the basket. #1 enters to either side and cuts to the corner away from the ball. Here we see #2 getting the ball on the left wing and #1 cuts away to the opposite corner.

2

Illinois Set Play vs. Man Defense

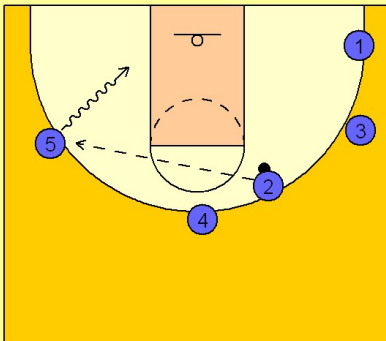


Once #2 has it, #5 steps out and sets a ball screen for #2. #2 comes off the ball screen and curls over the top of the key. #4 steps in and out as #2 drives by him.

#2 has the option to turn the corner looking to score or drive and kick out to #1 or #3. He can also hit #4 for the perimeter jumper if the defense helps on #2's drive.

3

Illinois Set Play vs. Man Defense



#2 may also pass it over to #5 who has the cleared out side to penetrate or take the perimeter jumper if his man sunk in to help on #2's penetration.