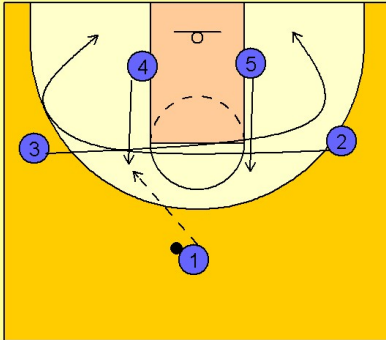


# Illinois

## Set play (21)

1

Illinois Set Play vs. Man Defense

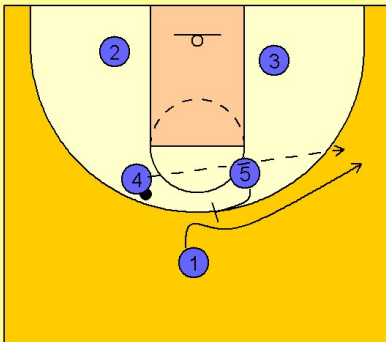


#2 and #3 exchange sites and then move down to their respective low block areas. As this happens, #4 and #5 are flashing to the high post. #1 enters the ball to either post player.

Here we see #1 pass to the left high post player #4.

2

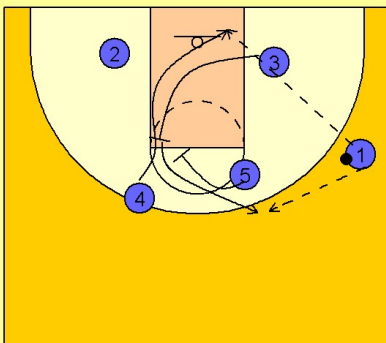
Illinois Set Play vs. Man Defense



Once #4 catches the ball, #5 sets a back screen for #1. #1 fades to the right wing area looking for the pass over the top from #4.

3

Illinois Set Play vs. Man Defense



As #1 catches the ball, #3 is moving in the lane setting a back screen for #4. As soon as #4 comes off the back screen, #5 is setting a "pick the picker" screen for #3 who is popping out on top for the open jump shot.