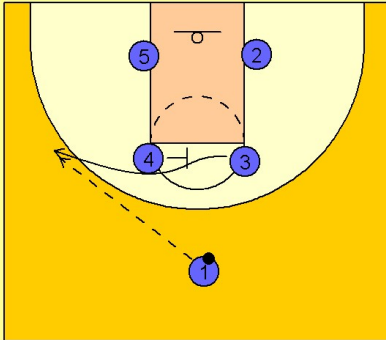


Illinois Set play (22)

1

Illinois Set Play vs. Man Defense

The play starts with #4 screening across for #3. #3 receives the entry pass from #1 on the left wing.

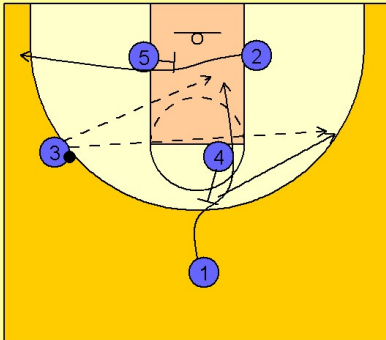


2

Illinois Set Play vs. Man Defense

As soon as #3 catches the ball, two actions are taking place together.

#5 is screening for #2 to break to the left corner while #4 is back screening for #1 going to the basket or breaking out to the right wing area.



3

Illinois Set Play vs. Man Defense

If #1 did not receive the ball, #4 steps out and they try to isolate #5 inside.

