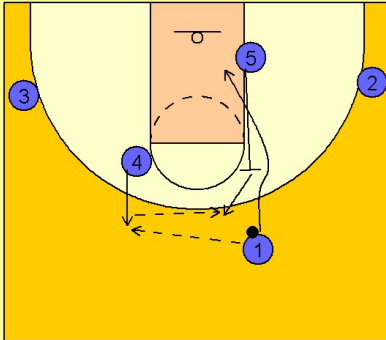


Illinois Set play (23)

1

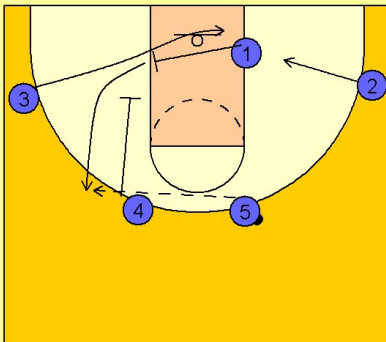
Illinois Set Play vs. Man Defense



#1 passes to #4 breaking out on top. #5 sets a back screen for #1 who cuts straight to the basket. #5 steps out after back screening and receives the pass from #4.

2

Illinois Set Play vs. Man Defense

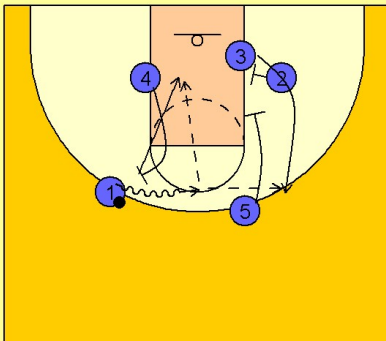


#3 now cuts across the low block area receiving a screen from #1 while #2 moves in to set another screen for #3.

#4 then moves down to set a down screen on the screener, #1. #5 looks for #1 coming off the down screen.

3

Illinois Set Play vs. Man Defense



Once #1 has the ball, #4 steps out and ball screens for #1. As this pick and roll action is taking place, #2 and #5 are setting a double staggered screen for #3. #1 can hit #3 coming off the screen or hit #4 rolling to the basket or popping out on the perimeter.