

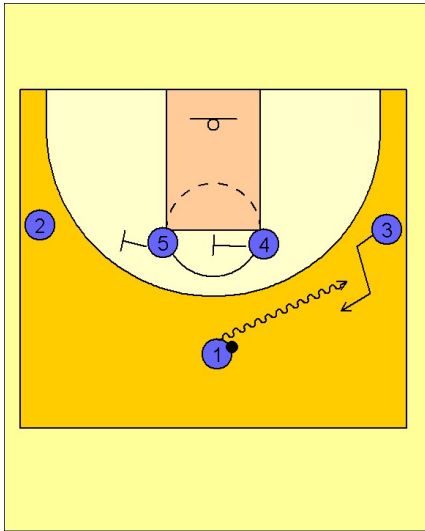
Illinois Set play (25)

1

Illinois Set Play vs. Man Defense

1 - 4 high to begin.

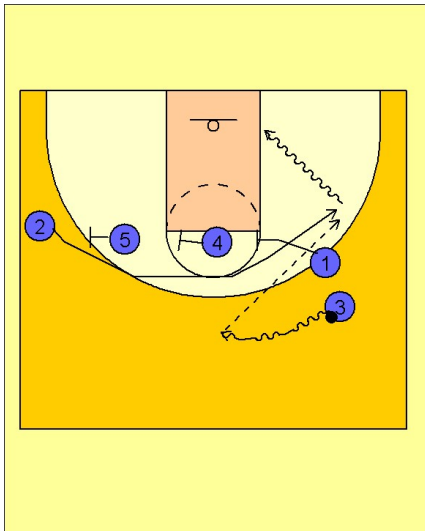
#1 drives at #3 on the right wing. #3 comes over to receive the dribble hand-off from #1. As this hand-off is taking place, #5 and #4 are starting to move out to set a staggered screen for #2 on the left wing.



2

Illinois Set Play vs. Man Defense

As #3 dribbles to the top, #5, #4 and now #1 set a triple staggered screen for #2 cutting over the top of the screens for the open shot on the right wing or perhaps the dribble penetration.



3

Illinois Set Play vs. Man Defense

If #2 does not receive the ball, #1 now uses the double staggered screen from #4 and #5 to get open on the left wing for the shot or potential dribble penetration.

