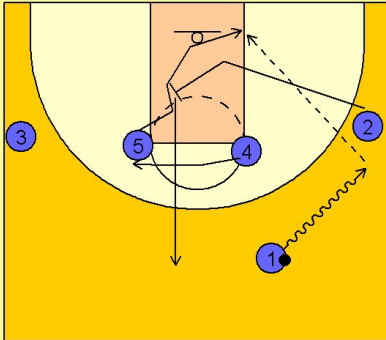


Illinois

Set play (27)

1

Illinois Set Play vs. Man Defense

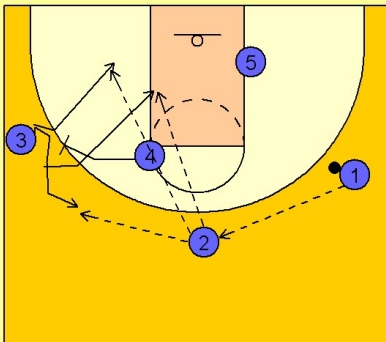


#1 dribbles the ball to the right side of the floor. #2 cuts down in the lane and then up to set a diagonal backscreen on #5's defender. #1 first look is to #5 on the right low block (he could also look to penetrate to the basket when #2 clears out).

#2 breaks out to the top while #4 slides over to take the position once occupied by #5.

2

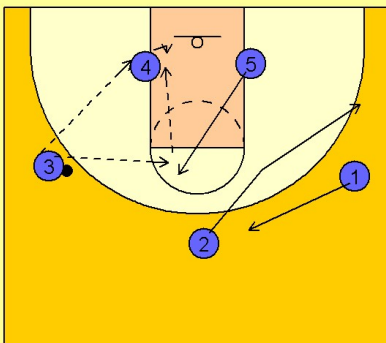
Illinois Set Play vs. Man Defense



#1 would then reverse the ball to #2 on top. #4 steps out and screens for #3. #3 can come over the top for the shot, curl over the screen, or cut backdoor off the screening action.

3

Illinois Set Play vs. Man Defense



If #3 receives the ball on the wing, #4 will post up after screening while #2 and #1 exchange on top.

#5 may also flash into the high post for the high / low entry pass inside to #4.