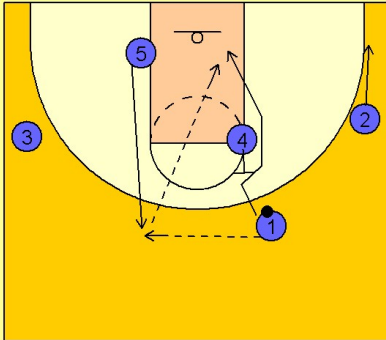


Illinois Set play (28)

1

Illinois Set Play vs. Man Defense

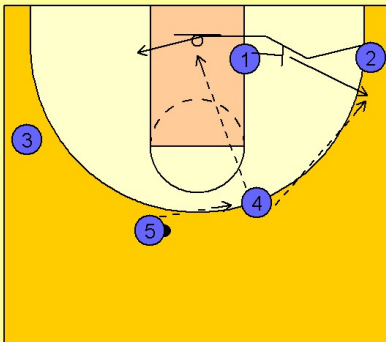


#5 flashes to the top of the key area opposite the ball. #1 enters the ball to #5 and then gets a backscreen from #4.

#5 will look to hit #1 if he is open. #2 flattens out to the right corner area.

2

Illinois Set Play vs. Man Defense

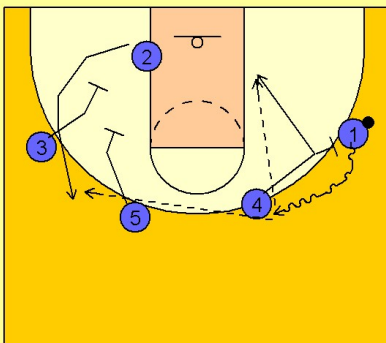


If #1 did not receive the ball coming off the backscreen from #4, #4 steps out and receives the pass from #5. #1 now steps out and either backscreens for #2 or #2 will downscreen for #1.

#4 will pass to the wing player #1.

3

Illinois Set Play vs. Man Defense



Once #1 has the ball, #4 may come over and ballscreen for #1 and roll to the basket or he may fake the screen (called slipping the screen) and cut to the basket looking for the pass back from #1.

As this action on the right side of the floor is taking place, #3 and #5 are setting a double staggered downscreen for #2.

#1 comes off the screening action looking to score, hit #4 rolling, or look to hit #2 coming off the double staggered screen.