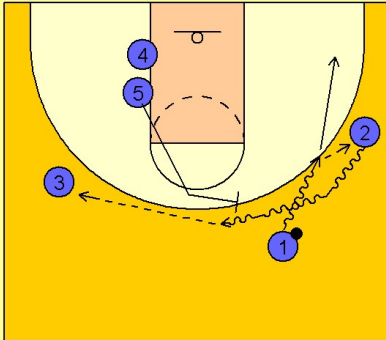


Illinois Set play (29)

1

Illinois Set Play vs. Man Defense



#1 dribbles at #2 on the right wing and either passes the ball to #2 or executes a dribble handoff.

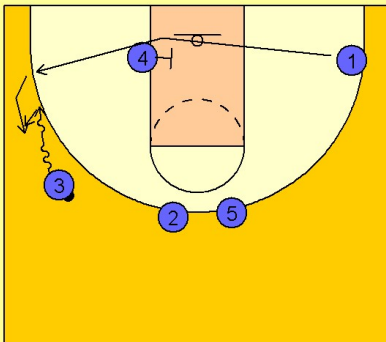
#1 cuts to the right corner after passing to #2.

#2 takes the ball and uses a ballscreen from #5 who has flashed to the top of the key area while #1 and #2 were exchanging the ball.

#2 comes off the ballscreen and passes to #3 on the left wing.

2

Illinois Set Play vs. Man Defense



As #2 is coming off the ballscreen on top with #5, #1 is cutting across the baseline and uses a screen from #4 on the left low block area.

#3 looks to make the pass to #1 in the corner or will execute a dribble handoff with #1.

#1 will look to take the open three point shot upon taking the ball from #3 or will look to curl in the lane with the ball and score.