

# Illinois

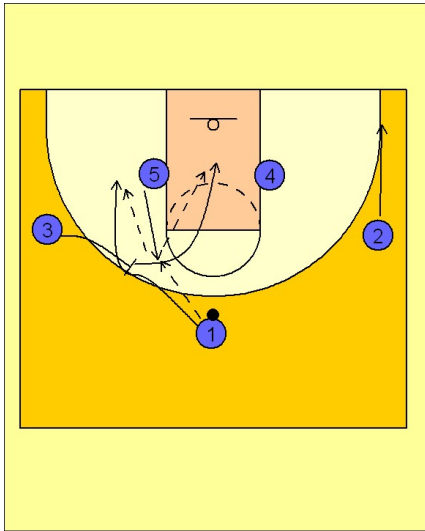
## Set play (3)

1

Illinois Set Play vs. Man Defense

1 - 4 high set to begin. One post steps out to receive the entry pass.

#1 hits #5 in this diagram. #3 moves over and sets a back screen for #1 who cuts over the top looking for a pass from #5. #3, after screening for #1, cuts down the middle of the lane looking for the pass from #5.



2

Illinois Set Play vs. Man Defense

If #5 does not pass the ball, he will take it on the dribble towards the right side. #2 will come over the top of #5 looking for the dribble hand off. #5 can hit #2. If this happens, #2 curls hard around #5 and attacks the basket looking to score or drive and kick out to #1. If #2 does not take the hand off, #5 can look for #3 popping out off the down screen from #4.

