

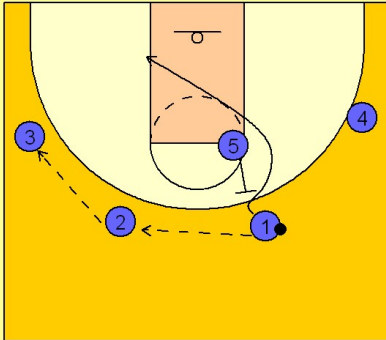
# Illinois Set play (4)

1

Illinois Set Play vs. Man Defense

2 - 3 high to begin.

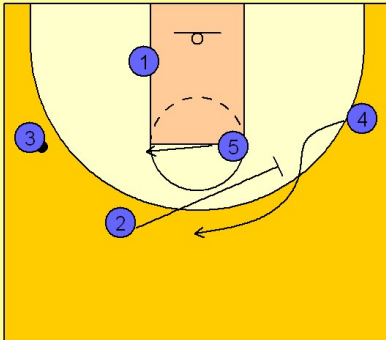
#1 passes over to #2 who passes to #3 on the left wing. #5 steps out and back screens #1. #1 cuts through the lane down to the ball side low block area.



2

Illinois Set Play vs. Man Defense

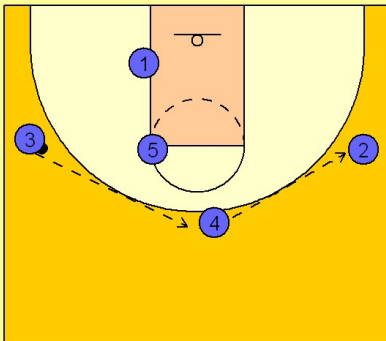
#5 slides over while #2 screens away for #4 bringing him to the top of the key.



3

Illinois Set Play vs. Man Defense

#3 passes to #4 on top who passes the ball to #2 on the right wing.

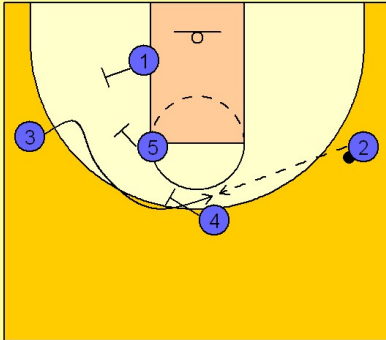


# Illinois

## Set play (4)

4

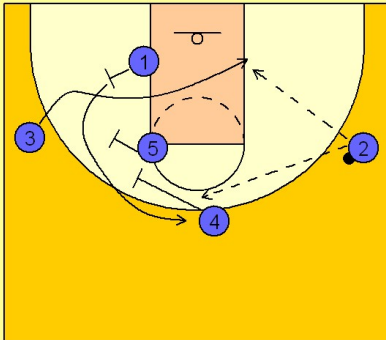
### Illinois Set Play vs. Man Defense



After #3 passes the ball he has two options. First, he can fake like he is cutting off the back screen from #1 and then come off the double staggered screen from #5 and #4. #2 can hit #3 on top for the open jumper. If that is not open they will run motion for the remainder of the shot clock.

5

### Illinois Set Play vs. Man Defense



The other option is to use the back screen from #1 and then #1 would use the double staggered screen from #5 and #4. #2 has two options to pass to in this situation.