

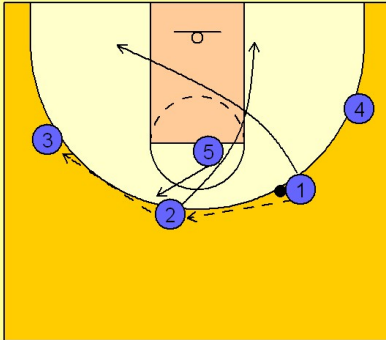
Illinois Set play (6)

1

Illinois Set Play vs. Man Defense

2 - 3 high to begin.

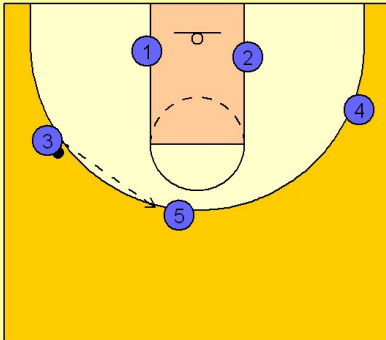
#1 passes to #2 on top who passes to #3 on the left wing. #1 cuts through after passing to the low block on the ball side. #2 cuts away to the opposite low block. #5 steps out on the perimeter after they have cut through.



2

Illinois Set Play vs. Man Defense

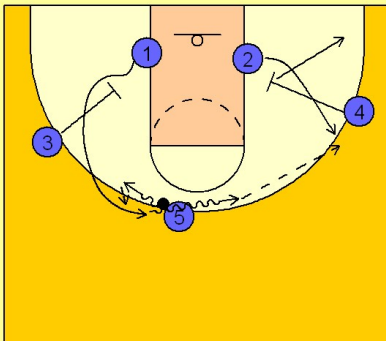
#3 reverses the ball to #5 on top.



3

Illinois Set Play vs. Man Defense

After passing to #5, #3 down screens for #1 who comes around the screen and takes a dribble hand off / screen from #5. As #1 comes off the dribble hand off, #4 is down screening for #2. #4 then breaks out to the right corner. #1 looks to hit #2 coming off the down screen by #4.

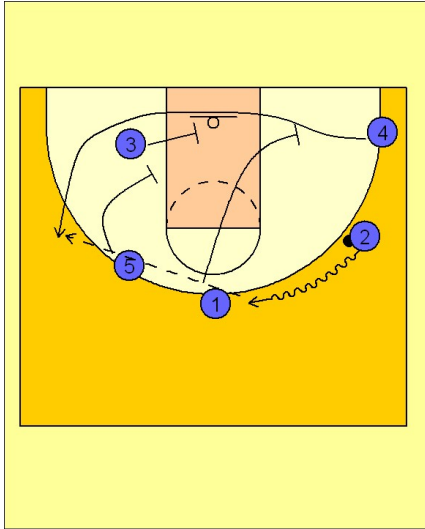


Illinois

Set play (6)

4

Illinois Set Play vs. Man Defense



Once #2 has the ball, #1 cuts through after passing to #1. #4 is now set up to receive a triple screen from #1, #3 and #5 on the left side. #2 centers the ball on the dribble while looking for #4 freeing himself off the triple screen.