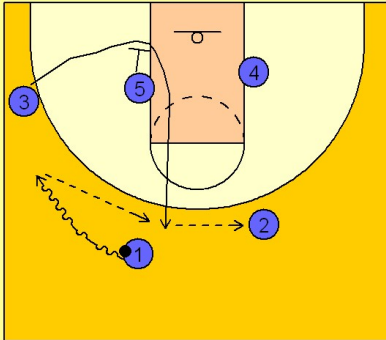


Illinois Set play (7)

1

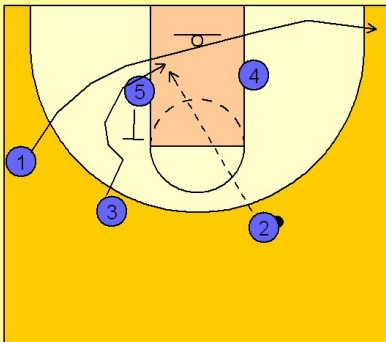
Illinois Set Play vs. Man Defense



#1 dribbles toward #3 on the left wing. #3 cuts down underneath the screen from #5 and pops out on top to receive the pass from #1. #3 then passes over to #2 on the right.

2

Illinois Set Play vs. Man Defense

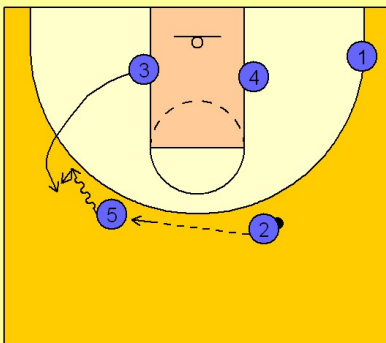


After #1 passes the ball he cuts through the lane out to the opposite corner area.

#5 steps up and back screens for #3 who cuts to the basket looking for the pass from #2.

3

Illinois Set Play vs. Man Defense

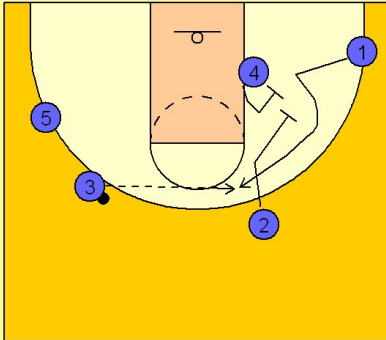


If #3 is not open, #2 passes the ball to #5 who stepped out after back screening for #3. #5 takes the ball on the dribble to the left and executes a dribble hand off with #3.

Illinois Set play (7)

4

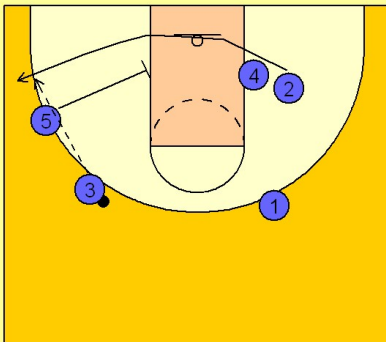
Illinois Set Play vs. Man Defense



As #3 gets the ball, #4 and #2 set a double screen for #1 in the right wing / corner area. #3 will look to hit #1 coming off high if he is open.

5

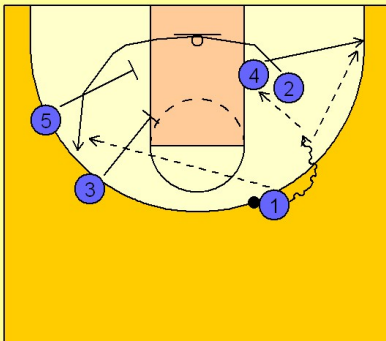
Illinois Set Play vs. Man Defense



If #1 does not receive the ball, #2 will cut underneath the basket and out to the other wing off a down screen from #5. #3 will hit #2 if he is open for a shot.

6

Illinois Set Play vs. Man Defense



If #1 does receive the pass off the double screen from #4 and #2, #3 and #5 will now set a double down screen for #2 who has again cut under and out to the opposite wing area.

#1 will look to hit #2 if he is open or he will attack the basket on the dribble looking for the dump down pass to #4 or the kick out to the corner if #4 decided to step out after #2 had vacated.