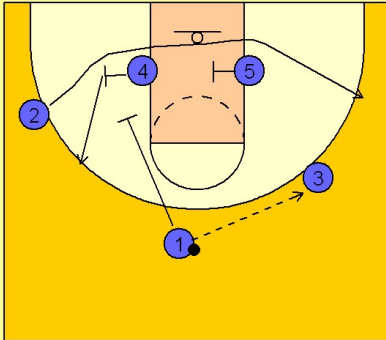


Illinois Set play (8)

1

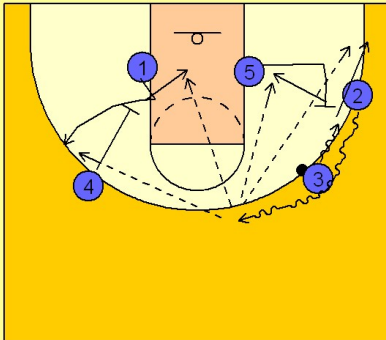
Illinois Set Play vs. Man Defense



#1 passes to #3 on the right wing. #2 cuts across the low blocks off of screens from #4 and #5. #1 down screens for #4 after passing to #3.

2

Illinois Set Play vs. Man Defense



Once #3 has the ball he dribbles toward #2 and executes a dribble handoff with him. #2 takes the ball into the middle.

#3 fades to the corner off of a back screen from #5.

#2 can look for #1 using the down screen from #4 on the back side. He can come off high or fake high and cut to the basket.

#2 can also look for #3 fading to the right corner or #5 rolling to the basket after back screening for #3.