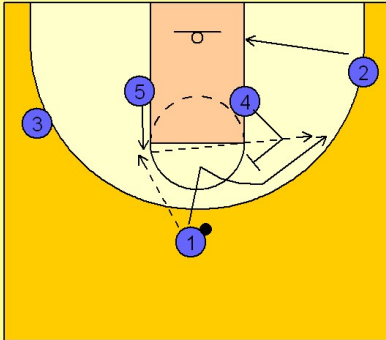


# Illinois Set play (9)

1

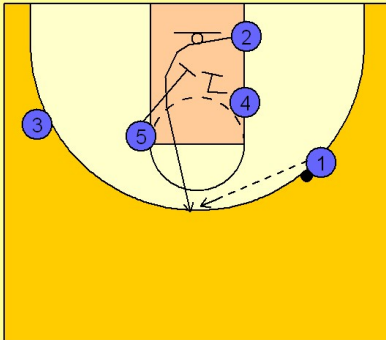
Illinois Set Play vs. Man Defense



#5 steps up and receives the entry pass from #1. #4 sets a back screen for #1. #1 fades to the right wing area. #2 cuts down to the right low block.

2

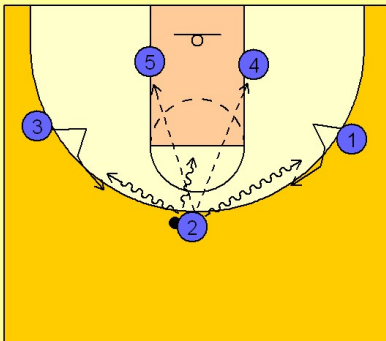
Illinois Set Play vs. Man Defense



#2 then uses the double down screen from #5 and #4 trying to get open on the top of the key for a jumper. #1 will pass to #2 on top if he is open.

3

Illinois Set Play vs. Man Defense



They are now in their 3 out 2 in alignment and will run their motion offense from here with dribble weave action on top and #5 and #4 looking to pin and seal in the post.